

1. Item 6biv - A29 realignment update

- 1.1 The A29 realignment scheme will deliver a new 4.34km road, starting from the existing A29 Fontwell Avenue, north of Eastergate to the existing A29 Lidsey Road, north of Shripney. The scheme includes:
- new single carriageway road (in each direction), with a combined cycleway/footway along its entire length
 - potential planting of trees in verges between the carriageway and combined cycleway/footway
 - construction of a new railway bridge over the existing West Coastway railway line with provision for cycling and walking routes parallel to the railway line on both sides
 - construction of a foot and cycle bridge to support the local school cycling and walking routes
 - links to Public Rights of Way and provision to support future green infrastructure investment via the Arun Local Plan
 - provision of pedestrian crossing points at junctions.
- 1.2 From the initial feasibility drawings in the Arun Local Plan the A29 realignment scheme has been developed into a preliminary design by WSCC's consultant. A Transport Business Case has been produced for consideration by the Local Enterprise Partnership who are one of the funding partners, and WSCC should know the outcome of this in October 2019.
- 1.3 A public consultation exercise took place between 26 February and 2 March 2019 where there was the opportunity to meet with officers to view and discuss the proposed plans for the new A29 route. The results of which are currently being reviewed and will be published in autumn 2019.
- 1.4 A planning application and Environmental Impact Assessment is currently being prepared for Phase 1 (northern route) and it is planned to be submitted to WSCC Planning in Spring 2020. Ecology surveys for Phase 1 (northern route) are ongoing.
- 1.5 Tender documents for Phase 1 (northern route) from WSCC's framework contractors are currently being reviewed, with the initial focus on the detailed design element of the scheme. The detailed design stage will, where possible and appropriate, incorporate aspects of the consultation responses.
- 1.6 The web site has more details: <https://www.westsussex.gov.uk/roads-and-travel/roadworks-and-projects/road-projects/a29-realignment-scheme/>.

2. Agenda Item 9 – Improvement Projects – Tricia Butcher

- 2.1 Below is an update on Rights of Way Improvement Plan (RoWIP) projects that West Sussex Local Access Forum (WSLAF) has supported and been involved with (from previous RoWIP project lists) and which are ongoing.

3. LW10 – Downs Link - Christ's Hospital

- 3.1 Site works have begun on construction of a link path between the former railway track bed west of Christ's Hospital station and the existing station car park. This will in future carry the Downs Link (DL), thereby enabling its users to avoid 1.5km of road use along Weston's Hill road and Christ's Hospital Road. Additional surfacing works will be delivered from Mill Lane and the

route may be opened to use in Spring 2020. Particular thanks to Christ's Hospital School for the support it continues to give to the project.

3.2 **HW135 – Balcombe Bridleway 3727**

The new bridleway (BW) 3727 from Greentrees Farm north to BW 79W opened to users in April 2019 following surfacing works by West Sussex County Council (WSCC).

4. **LW12 – Downs Link - Partridge Green**

- 4.1 This project aims to provide a safer route for the DL at Partridge Green, where it crosses and follows the B2135 for 500m. WSCC has employed a consultant to assess options to re-route the DL and, if a feasible route is identified, to secure public access rights as appropriate and develop a works specification. It is hoped to complete this work this financial year.

5. **LW34 – A23 Newtimber bridleway creation**

- 5.1 This project aims to create an official BW route from B2117 to BW5N parallel to A23. Highways England has resubmitted the project to the 'designated funding' scheme, now that new funding is available.

6. **LW14 – A281 Downs Link Crossing**

- 6.1 To improve safety at DL crossing of A281 (Rudgwick) ideally with Pegasus crossing. The field gate has been moved, so that the gap for non-motorised users (NMU) is on the north side away from the busy A281. WSCC Highways has investigated the possibility of moving the speed limit signs, as at present they restrict visibility (particularly crossing north to south) for users of the crossing (especially horse riders), but has been told this is only permitted where there is evidence of an urgent safety issue in the form of road traffic collision data. In spite of all knowing this is a difficult place for NMUs to cross the A28, there have been no collisions of any sort in the area for the last five years. Highways is required to concentrate the limited resources on places in the county where there is a clear history of accident data.
- 6.2 In view of this all that can be done is to install large new sign on each approach, modelled on signs currently in place for the South Downs Way, and these are currently being designed and manufactured.

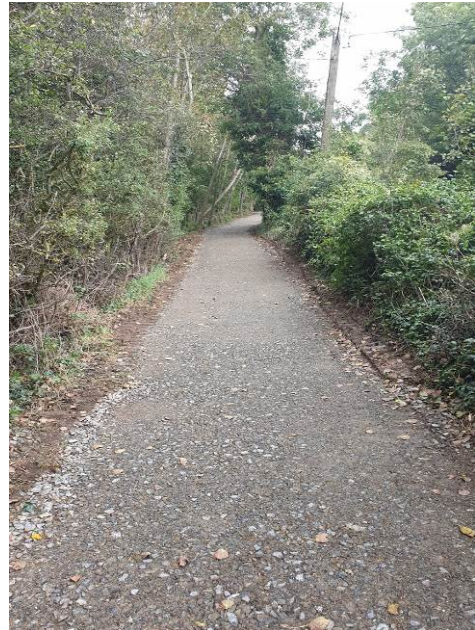
7. **Downs Links Programme (previously known as Beautiful Outdoors)**

- 7.1 Works are being progressed this financial year to complete improvements to South Downs Way crossing points in Harting and Pyecombe. Works have been completed at Harting to install new signage, improve the alignment of the route approaching the road and the placement of structures. At Pyecombe, resurfacing works have been completed along the western section of the road (see photo), new signage has been installed and vegetation clearance has been completed. The works at Pyecombe will be completed when warning markings on the highway will be put down.



8. Improvements to the Downs Link – funded by the European Agricultural Fund for Rural Development (EAFRD)

- 8.1 WSCC was awarded £558,000 to improve five sections of the Downs Link by December 2020. Works have been completed at Henfield to the car park and the surface of the route. Surfacing works have started between Needs Bridge and Partridge Green and should be completed before half term. The third section that will be resurfaced this year is between Rudgwick and Slinfold and is programmed to start at the beginning of November. The final two sections of work will be delivered in Summer 2020.



9. NMU crossing of the A283 linking BWs 2623 and 2697 - Washington (LTIP0173)

- 9.1 The scope of this scheme is to try to establish a safe and convenient way for NMU's to cross over this busy road improving connectivity between communities and improving access to the National Park. At present the A283 creates considerable severance to NMU's and this scheme was put forward as a priority by the BHS for investigation.
- 9.2 As part of the 2019/202 Annual Delivery Programme (ADP) the County Council committed to undertake an optioneering process to establish feasible solutions, to understand risks involved and cost implications. At present WSCC consultants are still working through this initial options appraisal and the Local Transport Improvement Programme (LTIP) Team will update as and when this is completed so the outcomes of this process can be consulted on further.

10. Centurion Way – Phase two, West Dean to Cocking

- 10.1 The planning application for the 6km route from West Dean to the South Downs Way National Trail was approved on Thursday 10th October. The South Downs National Park Authority can now start on acquiring the necessary resource's to construct phase two, however further progress cannot be made until a dedicated staff resource is available. Ecological surveys will continue to collect data around West Dean tunnel.

11. Forestry England

- 11.1 The operational part of the Forestry Commission, which manages the nation's forests has changed its name to Forestry England. Research shows that not enough people know who it is and what it does, and it often get confused with other organisations and other parts of the Forestry Commission. By creating a more distinct and recognisable brand identity more people will:
- know who it is and what it does
 - choose to visit and buy its products and services,
 - want to work with it and for it

The more support it has from people the more it can do to maintain the nation's forests for generations to come. www.forestryengland.uk/rebrand

12. WSCC Rights of Way (ROW) Committee

12.1 The last meeting of the Rights of Way Committee was held on 22 October 2019. All papers can be found on the [Rights of Way Committee web pages](#). The next meeting is scheduled for 10 March 2020.

12.2 Since the last WSLAF meeting:

- The following Definitive Map changes have been made to all or part of the following paths:
 - **Horsham Footpath (FP) 3771** – Definitive Map Modification Order (DMMO), Wildlife and Countryside Act 1981 (W&CA), Section 53(2)(b) - addition of a public footpath (90m)
 - **Horsham FP 3772** – DMMO, W&CA S53 - addition of a public footpath (160m)
 - **Steyning Bridleway (BW) 3773** – Creation agreement, Highways Act 1980 (HA), Section 25 – addition of a public bridleway linking to the South Downs Way (106m)
 - **Elsted and Treyford /Harthing FPs 371, 372, 373, 3774, 3775** – Diversion, HA Section 119 / Creation agreement HA S25 – resulting in addition of new footpaths (1043m)
 - **Pulborough FP 3776** - Creation agreement, HA S25, addition of a public footpath (78m)
 - **Warnham BW 3777** - Creation agreement, HA S25, addition of a bridleway (487m)
 - **Southwater BW 3568** – Creation agreement, HA S25, extending the existing public bridleway to link with Worthing Road (169m).
- Four new DMMO applications, which seek to modify the Definitive Map and Statement, have been formally accepted.

13. WSLAF Future Meetings

13.1 All formal meetings will start at 10.30am (tea/coffee at 10.15am) and are followed by lunch for members and speakers. Dates, venues and items in italics are suggestions to be confirmed at the meeting.

Date	Type	Venue	Proposed Topic / Speaker to include
5/2/2020 (TBC)	Informal	TBC	TBC
1/4/2020	Formal	Chichester	AGM / TBC

Suggested speakers: Forestry Commission, Highways England, Network Rail, WSCC Officer to explain Infrastructure Project delivery and role of CLCs.

14. Neighbouring LAFs

14.1 South Downs Local Access Forum (SDLAF)

The next meetings of SDLAF is:

- Wednesday 23 October 2019
<http://www.southdowns.gov.uk/get-involved/local-access-forum>.

14.2 Brighton & Hove Local Access Forum

The previous meeting of BHLAF was:

- Thursday 17 October 2019

<http://www.brighton-hove.gov.uk/index.cfm?request=c1238738>

14.3 East Sussex Local Access Forum

The next meeting of ESLAF is:

- Wednesday 6 November 2019

<http://www.eastsussex.gov.uk/leisureandtourism/countryside/rightsofway/localaccessforum/default.htm>

14.4 Hampshire Countryside Access Forum (HCAF)

The next meeting of HCAF is:

- Tuesday 10 December 2019

<https://www.hants.gov.uk/landplanningandenvironment/countryside/hcaf>

HCAF had produced Equestrian Guidance for developers and planners, which can be accessed from section 4 'Projects and advice' of its website.

14.5 Surrey Local Access Forum (SLAF)

The previous meeting of BHLAF was:

- Tuesday 14 October 2019

<https://www.surreycc.gov.uk/land-planning-and-development/countryside/footpaths-byways-and-bridleways/countryside-access-forum>

Jane Noble, Forum Officer