

## Employment Trends in Arun District

### Business Register and Employment Survey (BRES) Analysis

#### Headline Data Summary 2016

#### Source

The Business Register and Employment Survey (BRES) is the official source of employee and employment estimates by detailed geography and industry. The Survey collects employment information from businesses across the whole of the UK economy excluding farm agriculture, nor does it include self-employed who are not registered for VAT or PAYE schemes. The data is available from Nomis<sup>1</sup>. There have been changes to the BRES coverage in 2016 to include solely Pay As You Earn (PAYE) based businesses, ONS have revised the 2015 data in order to be consistent with the latest release, so this report is based on the 2015 and 2016 data only.

#### Employment in 2016

- There were a total of 45,100 employee jobs in Arun district in 2016 and this makes up 12% of the total in West Sussex.
- 39,730 (88.1%) of these employee jobs are in the private sector, Arun has higher proportions of private sector employee jobs compared to both West Sussex (86.4%) and England (83.0%).
- The remaining 5,375 (11.9%) of employee jobs were in the public sector, Arun has lower proportions of public sector employee jobs compared to both West Sussex (13.6%) and England (17.0%).
- 28,070 (62.2%) were employed full time, less than two-thirds of the local employee jobs in Arun. These figures are below the county trends and national trends, West Sussex (65.7%) and England (68.1%). The reverse applies to part time employee jobs; 17,030 (37.8%) employee jobs in Arun, above the county average and national average, West Sussex (34.3%) and England (31.9%).

#### Employment Change 2015-2016

- There has been slight employment growth in Arun over the year 2015 to 2016 with 1,700 (3.91%) more employee jobs in Arun in 2016 compared to 2015. This is the same as the county average and above the national average (1.94%).
- The number of private and public sector employee jobs both increased by 1,520 (3.98%) and 180 (3.37%) respectively. Private sector change is higher than the county rates (3.53%) and public sector change is below the county (6.35%), but both are above the national averages for private (2.27%) and public (0.34%).
- Full time employee jobs increased by 540 (1.98%) in Arun, lower than the county average (2.84%) and above the national average (0.63%).
- Part time employee jobs increased by 1,150 (7.25%) in Arun. This is above the county average (6.01%) and national average (4.83%).

#### Change 2015-2016 Compared to the South East Region's Local Authorities

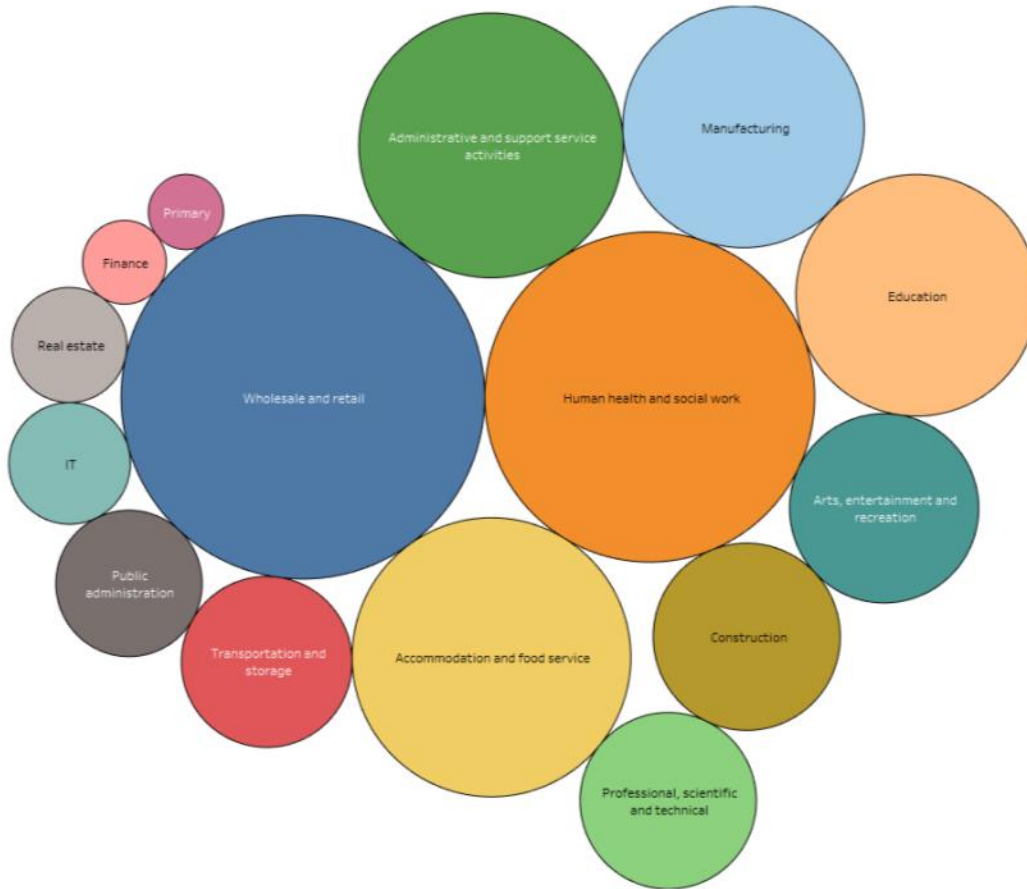
There are 67 district and borough areas in the South East region. By ranking these, with 1 indicating the highest level of growth and 67 indicating the lowest, we can measure the growth comparatively. The figures are calculated as a percentage difference between the 2015 and 2016 data. Arun is ranked 48<sup>th</sup> in terms of total size in the South East.

- 13** Arun is ranked highly, 13<sup>th</sup> out of the 67 district and borough councils, in the South East Region for **employment growth** between 2015 and 2016.
- 20** Arun is ranked 20<sup>th</sup> for **full time** employee change from 2015 to 2016.
- 17** Arun is ranked 17<sup>th</sup> for **part time** employee change from 2015 to 2016.
- 14** Arun is ranked 14<sup>th</sup> for **private** sector employee change from 2015 to 2016.
- 14** Arun is ranked 14<sup>th</sup> for **public** sector employee change.

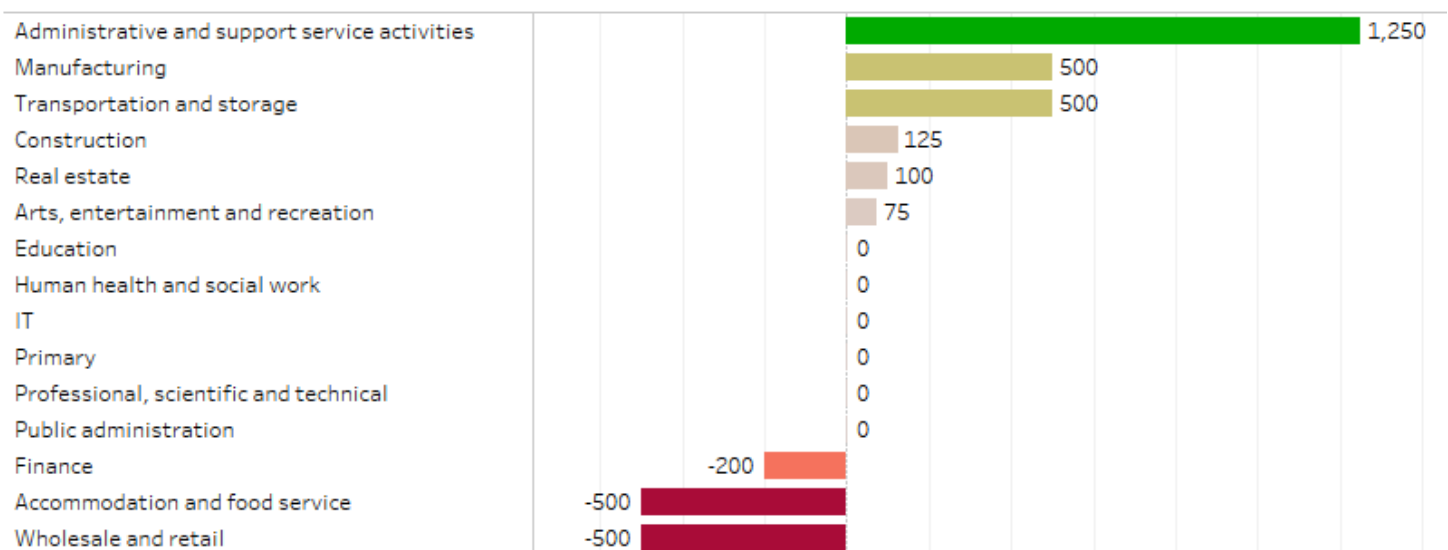
<sup>1</sup> The figures in this section are from the BRES public private open data source on Nomis <https://www.nomisweb.co.uk/>

## Employment Sectors<sup>2</sup>

The below packed circles diagram shows the individual sectors as a proportion of the employee jobs in Arun, the most employee jobs are in the wholesale and retail sector and the primary and utilities sector has the fewest.



- Four main sectors in Arun account for over half (55.6%) of employee jobs, these are in the wholesale and retail trade including repair of motor vehicles and motorcycles (18.9%), human health and social work (15.6%), accommodation and food services (11.1%) and administration and support services (9.1%).
- The employee change per sector from 2015 to 2016 is shown in the table below, green highlighting an increase and red a decrease.



<sup>2</sup> The figures in this section (industry related) are from the BRES open data source on Nomis <https://www.nomisweb.co.uk/>

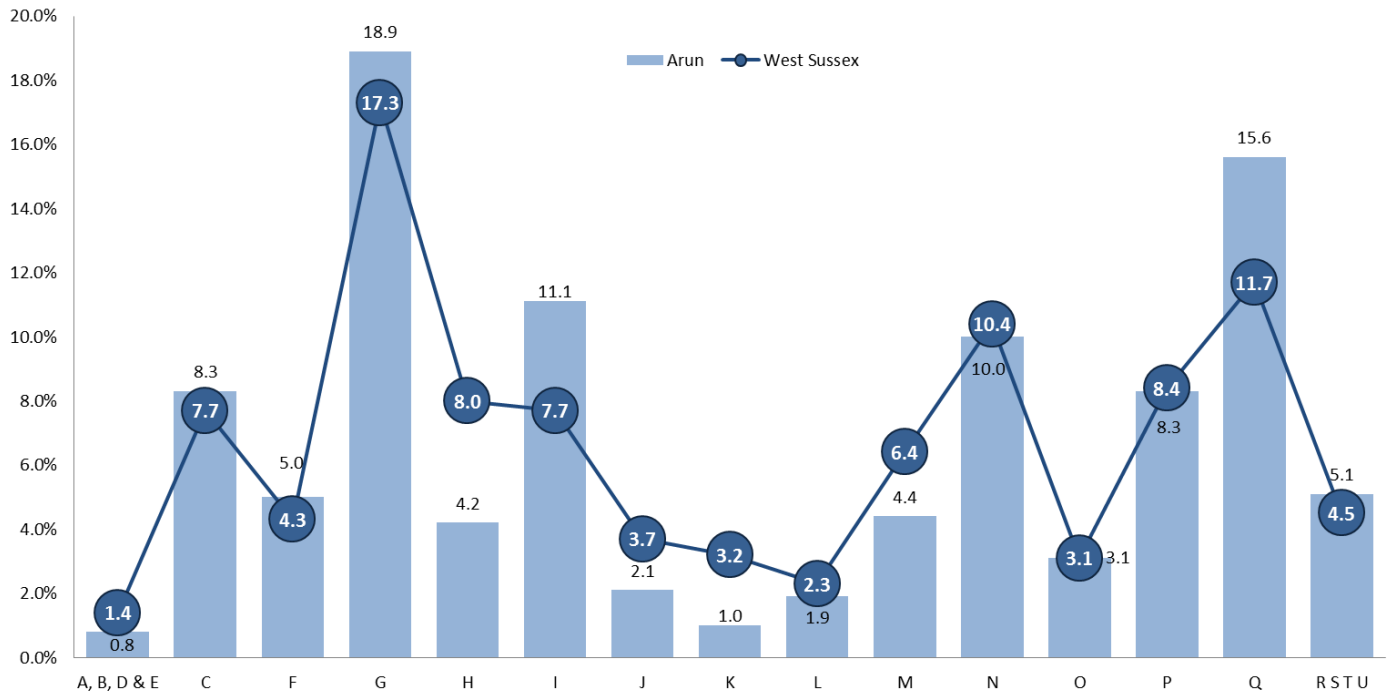
### Percentage of Employees in Employment by Sector 2016

The table below shows the percentage of employee jobs by sector for Arun, West Sussex, South East and England. The sectors highlighted are the top five in those areas. As can be seen from the table, manufacturing, human health and social work and accommodation and food services are key sectors within Arun compared to the county, region and England. Construction is also higher than the county and regional trends.

Industry	Arun	West Sussex	South East	England
A, B, D & E : Primary and Utilities	0.8%	1.4%	1.9%	1.8%
C : Manufacturing	8.3%	7.7%	6.3%	8.0%
F : Construction	5.0%	4.3%	4.9%	4.5%
G : Wholesale and retail trade; repair of motor vehicles and motorcycles	18.9%	17.3%	16.2%	15.3%
H : Transportation and storage	4.2%	8.0%	5.0%	5.0%
I : Accommodation and food service activities	11.1%	7.7%	6.8%	7.3%
J : Information and communication	2.1%	3.7%	6.1%	4.4%
K : Financial and insurance activities	1.0%	3.2%	2.8%	3.6%
L : Real estate activities	1.9%	2.3%	1.9%	1.7%
M : Professional, scientific and technical activities	4.4%	6.4%	8.8%	9.0%
N : Administrative and support service activities	10.0%	10.4%	9.1%	9.2%
O : Public administration and defence; compulsory social security	3.1%	3.1%	3.1%	4.0%
P : Education	8.3%	8.4%	10.1%	9.0%
Q : Human health and social work activities	15.6%	11.7%	12.0%	12.8%
R S T U: Arts, entertainment, recreation and other services	5.1%	4.5%	4.8%	4.6%

### Arun compared to West Sussex by industry

The table below shows how the percentages of employee jobs by industry in Arun compare with the county average.



The accommodation and food services sector (I) and the human health and social work sector (Q) show the proportions of employee jobs in Arun are notably higher than the county averages while the financial and insurance activities sector (K) and the transportation and storage sector (H) shows a significantly lower percentage than the county average. Transport and storage is one of the top 5 sectors in West Sussex, though not in the South East or England due to the presence of Gatwick Airport in Crawley.

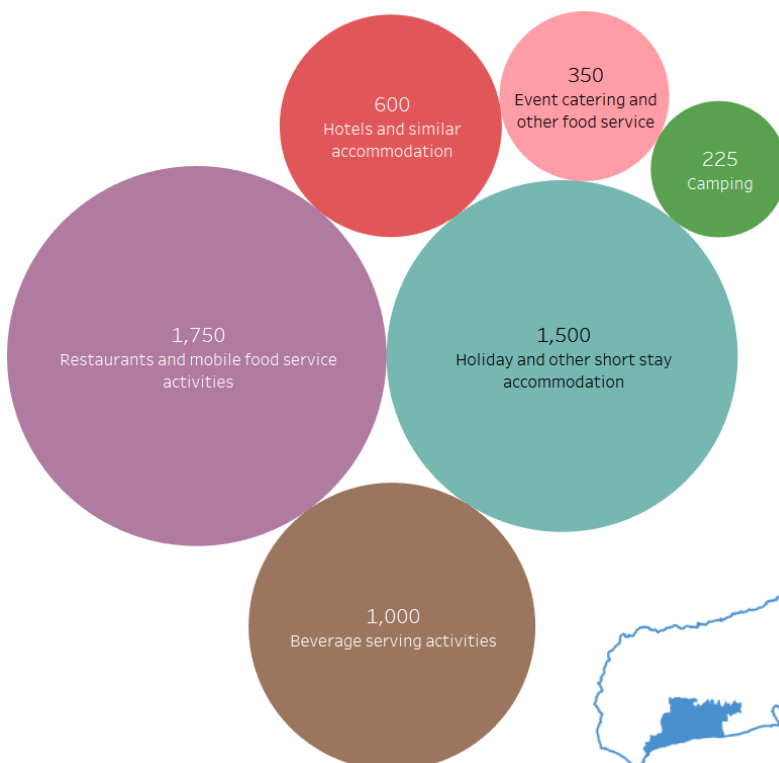
### Sector strengths and weaknesses (location quotients)

It is useful to understand local economic strengths by comparing the distribution of employment by sector in local authority areas with the national distribution. This is performed by using Location Quotients (LQ). Any LQ above 1.0 shows a local concentration and any below 1.0 shows an under representation.

LQ/Sector	Adur	Arun	Chichester	Crawley	Horsham	Mid Sussex	Worthing	West Sussex	South East
A, B, D & E : Primary and Utilities	0.6	0.4	0.3	0.8	0.6	0.5	1.9	0.8	1.3
C : Manufacturing	1.6	1.0	1.2	0.9	0.9	0.8	1.0	1.0	1.0
F : Construction	1.4	1.1	0.9	0.6	1.3	1.1	0.7	1.0	1.0
G : Wholesale and retail trade	1.2	1.2	1.0	0.9	1.3	1.3	1.1	1.1	0.9
H : Transportation and storage	0.4	0.8	0.5	4.6	0.6	0.6	0.5	1.6	0.6
<b>I : Accommodation and food service activities</b>	0.8	1.5	1.3	1.1	0.8	0.9	0.7	1.1	0.9
J : Information and communication	1.3	0.5	0.7	0.8	1.5	1.0	0.7	0.8	1.2
K : Financial and insurance activities	0.8	0.3	0.6	0.9	0.8	1.6	1.2	0.9	1.1
L : Real estate activities	0.6	1.1	2.8	0.3	1.8	1.4	1.4	1.4	0.7
M : Professional, scientific and technical activities	1.1	0.5	0.7	0.6	1.0	0.9	0.6	0.7	1.4
N : Administrative and support service activities	0.8	1.1	0.8	1.9	1.0	0.7	0.8	1.1	0.9
O : Public administration and defence; compulsory social security	0.7	0.8	1.6	0.7	0.4	0.4	1.1	0.8	1.3
P : Education	1.1	0.9	1.1	0.5	1.1	1.2	0.8	0.9	1.1
Q : Human health and social work activities	0.8	1.2	1.1	0.3	0.7	1.1	1.9	0.9	1.1
R S T U: Arts, entertainment, recreation and other services	1.2	1.1	1.3	0.4	1.3	1.2	0.9	1.0	1.0

As can be seen from the above table, Arun has local concentration in construction, wholesale and retail, accommodation and food services, real estate, public administration and defence, human health and social work and arts, entertainment and recreation.

Arun has under representation in the most of the other industries, particularly finance and insurance but also in others, including transportation and storage, primary and utilities, information and communication. Manufacturing remains on a par with the national average.



The key sector strength in Arun from the analysis is accommodation and food service activities, in particular restaurants and holiday and short stay accommodation. The total number of employees in each of these sectors is shown in the packed circles diagram on the left.

