

West Sussex Rights of Way Improvement Plan WSLAF Workshop

Jane Noble
19 October 2016

WSLAF RoWIP Workshop

- Introduction to a RoWIP for 2007 – 2017
- Public Rights of Way management in West Sussex
- Project Delivery
- What is good about access to the West Sussex countryside and what are the significant barriers to countryside access
- What do you think WSCC should be trying to achieve over the next 10 years for PRow in West Sussex?
- Working with you as key partners
- Suggestions of best practices from elsewhere that WSCC could consider
- Summary and next steps

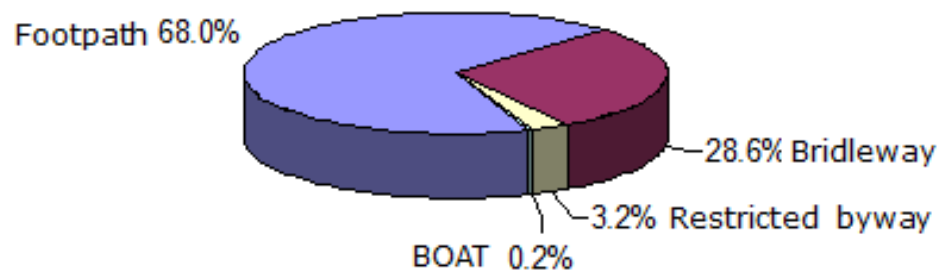
A RoWIP for West Sussex 2017 - 2027

- Countryside and Rights of Way Act 2000 – duty on Highways Authorities to produce and publish a RoWIP
- Consider all sectors of community and all modes and be aspirational
- CROW Act requires a 10 year review with Highway Authority deciding if to amend

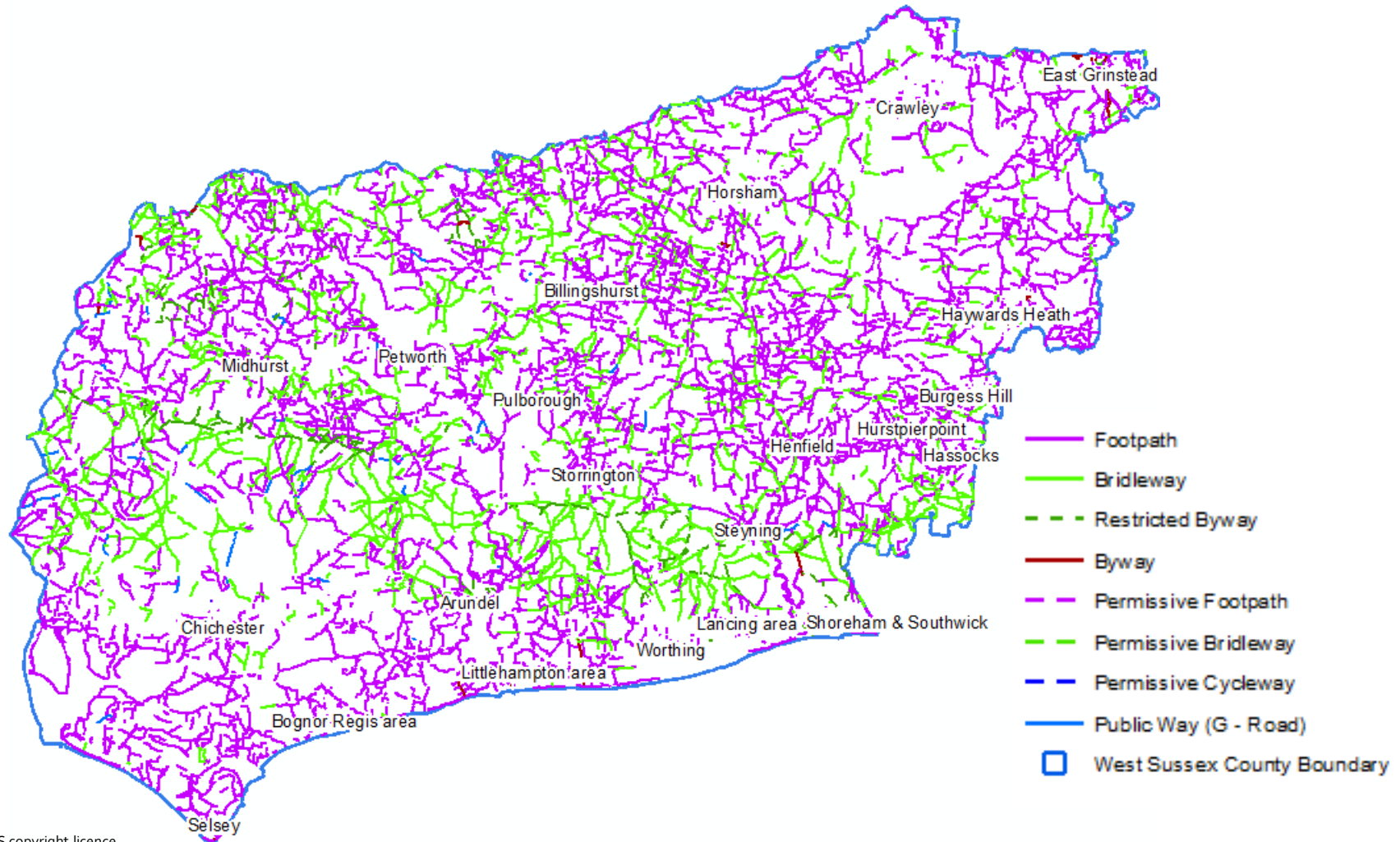
RoWIP Timeframe

October 2016	Pre-draft consultation with WSLAF
January 2017	Pre-draft consultation with SDLAF
March 2017	Public consultation on draft RoWIP
May 2017	Revised RoWIP to Environmental and Community Services Select Committee
June 2017	Cabinet Member Decision
July 2017	Publish RoWIP

Right of Way type	Permitted use	Kilometers
Footpath	On foot only	2,763
Bridleway	On foot, horseback and bicycle	1,180
Restricted byway	On foot, horseback, bicycle and horse-drawn carriage	127
Byway Open to All Traffic (BOAT)	On foot, horseback, bicycle, horse-drawn carriage and motor vehicle	13
	Total	4,083 Km



Rights of Way in West Sussex



WSSCC OS copyright licence
100023447

Key Responsibilities

WSCC	Landowner
Surface (including surface vegetation, steps and most bridges and boardwalks)	Overhead and side vegetation (including crops)
Signage	Gates and stiles
Ensuring landowners comply with the law	Keep rights of way free from obstructions
Correct line on the ground	Never to plough paths at the edge of fields
Recording rights of way on the Definitive Map	Not to keep dangerous animals where a right of way passes
	Not to deter or endanger the public

How Rights of Way are Currently Managed in West Sussex

Routine Inspection and Maintenance

- Inspection
- Routine works to Routine Contractor
- Contact Landowners
- Minor works



A smiling volunteer surfacing a path



Access Ranger measuring a plank bridge while inspecting a parish

Problem Reports

Problem Reports - Prioritised and recorded

- **Health and safety:** Inspected and addressed within 2 working days.
- **High priority:** Investigated within 10 working days and works arranged if considered too serious to wait for the scheduled 15 month maintenance programme.
- **Medium priority:** Inspected as part of the routine 15 month inspection cycle and works completed as part of the routine maintenance or volunteer programmes.
- **Low priority:** Inspected as part of the routine 15 month inspection cycle and only addressed if resources permit.
- **Not a maintenance priority:** will be progressed if an opportunity arises and resources permit.

Rights of Way Management (cont.)

Supporting Programmes / Activities

- Summer surface vegetation clearance programme (over 300km cleared annually)
- Gates for stiles
- Planning
- Partnership working
- Capital programme



Capital Investment

- Difference between Capital and Revenue
- Types of Capital
 - Maintenance Block
 - Integrated Transport Block
 - Developer funding – S106, CIL

Maintenance Block

- Bridge and Surfacing Programme - approximately £250,000



Integrated Transport Block

- Schemes which meet strategic objectives of WSCC i.e. Local Transport Plan, Walking and Cycling Strategy, RoWIP
- Likely to be new routes or significant improvements to existing
- Total fund approximately £3.7M – covers Community Schemes, Traffic Management schemes, Safer Routes to School, Bus Passenger Improvements, Telematics, Traffic signals
- PRow schemes are prioritised alongside all other schemes

Community Led Schemes and Developer Funding

- Community Led Schemes
 - May not directly meet WSCC strategic objectives
 - Still important to local communities
- Developer Funding
 - Infrastructure Lists
 - Planning Applications
 - S106 Agreements



Maintenance Block

- Bridge and Surfacing works
- Ensure WSCC is meeting it's duty and the network is usable



Integrated Transport Block

- New routes or significant improvements to existing network
- Community Led Schemes



Developer Funding

- Used on named schemes or any of the above

The good and the bad . . .

1. What do you think is good about access to the West Sussex countryside?
2. What do you think are the significant barriers to countryside access in West Sussex?

The good and the bad . . .

1. What do you think is good about access to the West Sussex countryside?
2. What do you think are the significant barriers to countryside access in West Sussex?

Keep high level and strategic

Discuss in pairs, think about the interest group/s your represent, put your thoughts on post it notes (one idea per note), feedback in pairs your top two suggestions per question (mark with a star)

Looking forward

- What do you think WSCC should be trying to achieve over the next 10 years for PRow / Countryside Access in West Sussex?

Looking forward

- What do you think WSCC should be trying to achieve over the next 10 years for PRow / Countryside Access in West Sussex?

Keep high level and strategic, we can't do everything

Discuss in pairs, think about the interest group/s your represent, put your thoughts on post it notes (one idea per note) and add to board

Working in Partnership with You

- As a key partner, how do you think we can best work with you, and the interest you represent?

Lessons to Learn from Others

- Learning from others - Your suggestions of best practice and opportunities that we may not be aware of

Summary and Next Steps

You have input your views on countryside access in West Sussex:

- What is good
- Barriers to access
- What WSCC should try to achieve over next 10 years

Next Steps

- Write up WSLAF workshop
- Consult with SD LAF
- Draft RoWIP
- Public Consultation (includes WSLAF)



Any Questions?