

WEST SUSSEX COUNTY COUNCIL
(WESTHAMPNETT: PUBLIC FOOTPATH NO. 417)
(TEMPORARY CLOSURE) ORDER 2026

NOTICE is hereby given that West Sussex County Council made an Order under the Road Traffic Regulation Act 1984, the effect of which will be to prohibit any person from proceeding along a length of Public Footpath No. 417, Westhampnett from its junction with Sidengreen Lane (488637.372, 106965.134) to its junction with Stane Street (488701.312, 106529.474), a distance of 760m.

The Order is necessary to protect public safety whilst resurfacing works are undertaken on the footpath surface.

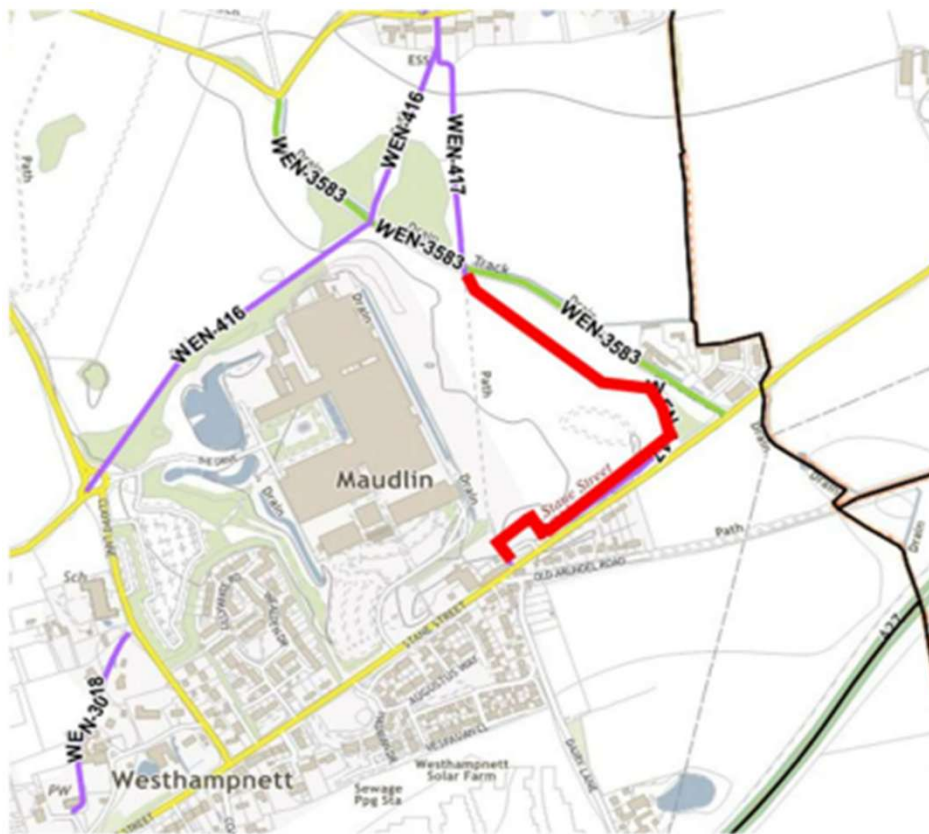
There is an alternative route available using Public Bridleway No. 3583 which will be clearly signed onsite.

The Order will come into effect on 1 April 2026 and will last for 6 months or until it is safe to reopen the footpath.

Any queries about the works to take place or the effect of the Order on persons using the footpath should be directed to PROW Team, WSCC telephone number 01243 777620

Dated 26 March 2026

Executive Director of Law Assurance & Insight
County Hall



SCALE
1:5,000

© Crown copyright and database rights 2025 OS AC0000849983. You are permitted to use this data solely to enable you to respond to, or interact with, the organisation that provided you with the data. You are not permitted to copy, sub-license, distribute or sell any of this data to third parties in any form.

(c) Crown copyright All rights reserved. WSCC Licence number AC0000849983



Public Footpath Route Temporarily Closed
Public Bridleway

Public Rights of Way, 1st Floor Northleigh, Tower Street,
Chichester, West Sussex, PO19 1RH;
www.westsussex.gov.uk/prow