

West Sussex Log List

*Where to buy woodfuel and wood
burning stoves in West Sussex*

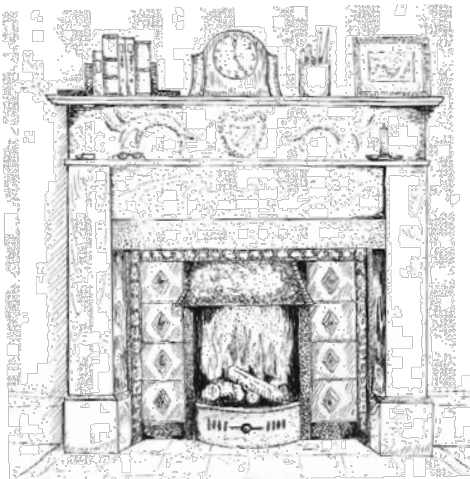


*Beechwood fires are bright and clear
If the logs are kept a year
Chestnut's only good, they say
If for long 'tis laid away
But Ash new or Ash old
Is fit for a Queen with Crown on gold*

*Birch and fir logs burn too fast
Blaze up bright and do not last
It is by the Irish said*

*Hawthorn bakes the sweetest bread Elm
wood burns like churchyard mould E'en
the very flames are cold
But Ash green or Ash brown
Is fit for a Queen with a golden crown*

*Poplar gives a bitter smoke
Fills your eyes and makes you choke
Apple wood will scent your room
With incense like perfume
Oaken logs, if dry and old
Keep away the winters cold
But Ash wet or Ash dry
A King shall warm his slippers by Anon*



Handy Hints

Generally the heavier the log the longer it will burn – use birch or alder to get your fire going and burning fast, mix and match different woods once it's established and put on oak or beech to keep it in over night. And don't forget to get your chimney swept regularly!

Other useful contacts

Brighton and Hove Wood Recycling Project Circus Street, Brighton BN2 9QF 01273 570500
info@woodrecycling.org.uk. Recycled timber for DIY and garden projects and small quantities of logs purchased.

Biomass Energy Centre A 'one stop shop' able to provide advice to anyone with an interest in biomass derived fuels and associated conversion technologies. www.biomassenergycentre.org.uk
01420 526197

Woodlots Promotes sustainable management of woodlands in the South East and the use of local timber.
www.wood.netmx.co.uk/woodlots 01580 879552

National Energy Foundation Log Pile Project: A project that aims to promote and aid the use of wood as a source of renewable energy and sustainable heating www.logpile.co.uk

National Association of Chimney Sweeps: To find a chimney sweep in your area and for good information on cleaning www.nacs.org.uk

HETAS: The official body recognised by Government to approve solid fuel domestic heating appliances, fuels and services. www.hetas.co.uk

South East Woodfuels Ltd. is a non-profit company working to supply reliable standards based woodfuel in the South East. Also supplies fuel for automated systems for large domestic and small to medium business use. 0845 869 3775 www.sewf.co.uk

If you would like your details to be included in this leaflet, or you have any comments, please contact 01243 642119.

View the West Sussex Log List at www.westsussex.gov.uk/woodlands to find out where to buy wood fuel and wood burning stoves in West Sussex.

NB: WSCC does not support or recommend the products or services advertised nor the organisations advertising them. Consumers should satisfy themselves on the suitability of any of the products or services and on the nature and standing of these organisations.

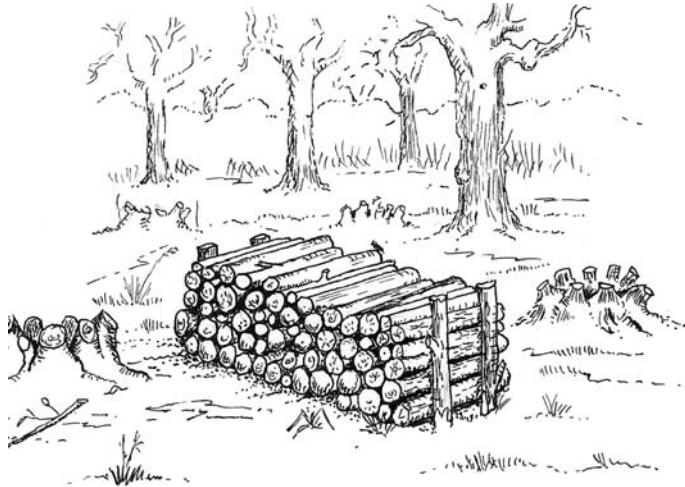
If this information is needed in an alternative format please contact us and we will try to meet your needs. Call 01243 642119.

Designed and published by WSCC, Environment and Development
Online edition updated January 2009. www.westsussex.gov.uk

Welcome to the West Sussex Log List. It lists firewood merchants and stove suppliers across the county of West Sussex.

With rising electricity, gas and oil prices, more and more people are turning to wood to heat their homes. Using logs from local woodlands has many environmental benefits.

- It is virtually *Carbon Neutral*. (There will be some carbon dioxide emissions from transportation). This means the carbon dioxide produced from burning the wood is absorbed by existing trees and there is only as much CO₂ released as the tree absorbed in its lifetime. Therefore, using wood for fuel does not contribute to climate change.
- Wood is a renewable resource.
- Logs cut locally have not been transported long distances; this also has wide reaching environmental implications.
- Woodland management contributes to the rural economy and supports local jobs.
- Appropriate woodland management benefits wildlife and enhances the landscape.



Questions to ask your log supplier

- Is the wood seasoned or green? (You should only burn wood that has been cut down for a year or more; unseasoned wood may present a fire hazard or cause chimney damage)
- How far will they deliver?
- Is delivery included in the price?
- Is it suitable for an open fire or a woodburning stove? (Some wood spits so is therefore not suitable for open fires.)
- Are they selling by weight or volume and how much does it cost? (in other words, what constitutes a 'load'?)
- What sort of wood – birch burns faster than oak for example.
- Check with your supplier whether the cost includes stacking.
- Most log merchants also supply kindling – you will need it.
- Why not ask your log merchant if they sell off cuts or small logs – great for reviving your fire if it begins to die down.

Please mention this leaflet when placing your order.



Wood Burning Stoves

When running at optimum efficiency, wood burning stoves can be 80% efficient. They are normally used for background heating, although some higher output versions, fitted with a back boiler, heat hot water and radiators. Sophisticated multifuel stoves mean you can swap between wood and coal and switch to gas or electricity to heat hot water in the summer. Typically, costs are between £1500 and £3000.

Remember, if you are buying a wood burning stove, please ensure that your installer is HETAS registered. Otherwise, you must seek Building Regulations Approval from your local authority before proceeding.

