

1. Rampion 2 Offshore Wind Farm Update

- 1.1 The Rampion 2 Development Consent Order (DCO) application for an offshore wind farm off the coast of Sussex, was accepted for examination by the Government's Planning Inspectorate. The application being examined includes detailed proposals for the Rampion 2 Offshore Wind Farm, the final Environmental Statement which sets out potential impacts and mitigations, and a Consultation Report which details the engagement and consultations carried out over the past three years and how the Project Team has taken account of the feedback received.
- 1.2 Situated to the west of the existing Rampion Offshore Wind Farm, Rampion 2, if consented, would include up to 90 turbines a minimum of eight miles offshore. An offshore export cable route would bring the power ashore under Climping Beach on the coast, and the underground cable route would continue inland to a new substation called Oakendene near Cowfold, then finally connect the power to the national electricity network at Bolney in Mid Sussex.
- 1.3 The Rampion 2 Offshore Wind Farm could generate enough electricity to power the equivalent of over one million homes and reduce carbon emissions by around 1.8 million tonnes.
- 1.4 The public will be able to view the final proposals and register as an 'interested party' with the Planning Inspectorate at the Project Page of the Planning Inspectorate website at [Rampion 2 Offshore Wind Farm | National Infrastructure Planning \(planninginspectorate.gov.uk\)](https://www.planninginspectorate.gov.uk/rampion-2-offshore-wind-farm). Anyone wishing to be kept informed or to participate in the examination can register at the same website.
- 1.5 The Examination process is expected to take six months, and a final decision on whether consent will be granted will be made by the Secretary of State for the Department of Energy Security and Net Zero by early 2025.
- 1.6 Tricia Butcher has registered as on behalf of WSLAF and will to keep the Forum updated on the Rampion 2 DCO proceedings.

2. A259 Bognor Regis to Littlehampton Corridor

- 2.1 Following the 2023 public consultation, the Cabinet Member for Highways and Transport has approved the preferred scheme and capital funding allocation for the development of the Full Business Case for submission to the DfT. [Decision - A259 Bognor Regis to Littlehampton Corridor enhancement scheme - Funding Acceleration and Revision to Proposals HT07 \(23/24\) \(moderngov.co.uk\)](https://www.moderngov.co.uk/2023/10/17/decision-a259-bognor-regis-to-littlehampton-corridor-enhancement-scheme-funding-acceleration-and-revision-to-proposals-ht07-23-24)

3. King Charles III England Coast Path

- 3.1 **East Head to Shoreham** – Following completion by West Sussex County Council (WSCC) of the necessary works on the ground to make 71km of West Sussex coast from East to Head to Shoreham accessible to the public, the rights of access for this stretch, under the Countryside and Rights of Way Act 2000, will come into force on 18th October 2023. Landowners and stakeholders, including WSLAF, have been notified by Natural England.

3.2 These new rights relate to the King Charles III England Coast Path and the coastal margin, a wider area of generally accessible land, mostly between the path itself and the seaward extent of the foreshore. This will join the other open section in the county, which extends from Shoreham into East Sussex. Details of the path alignment can be found on [National Trail.co.uk](https://www.nationaltrail.co.uk).

3.3 **South Hayling to East Head** - The remaining West Sussex stretch from South Hayling to East Head is awaiting approval by the Secretary of State before any required works on the ground can commence. It is forecast this stretch will be open by end of 2024.

4. WSCC Rights of Way staffing

4.1 Access Ranger Area 2 (central south of the County) – Louise Gandolfi has moved from Area 3 (2 days /week) to Area 2 (2.5 days/week), replacing Katrina Harper who retired earlier this year.

4.2 Access Ranger Area 3 (west of the County) - Kevin Dewitt's secondment to the post to of England Coast Path Project Officer has been extended until 31/3/24. The two part-time Access Ranger posts covering Area 3 have also been extended.

- Area 3 (part-time) – Lysiane Dallen takes up the post vacated by Louise Gandolfi, and starts the end of October (her Rights of Way Officer post has been back-filled by a temporary agency worker)
- Area 3 (part-time) – Matthew Williams left WSCC mid-October to take up a position as a Planning Officer with the South Downs National Park. Work is underway to recruit a replacement.

4.3 Area 6 Access Ranger - Steve Alexander started in this post in August and is settling in well.

4.4 A revised Access Ranger area map will be issued when the remaining post has been filled.

5. WSCC Cycling and Walking e-newsletter

5.1 An article seeking new WSLAF members was published in WSCC's Cycling and Walking newsletter and included a photo of WSLAF members on the recent visit to Buchan Country Park. Around 8,500 people are signed up to receive it ([Email alerts and eNewsletters - West Sussex County Council](#)).

6. WSCC Rights of Way – Definitive Map changes

6.1 Below are the changes made to the Definitive Map since the last formal WSLAF meeting:

- **Southwater 3794** (Wildlife and Countryside Act (W&CA)1981, S53) – 108m of new Public Footpath
- **Southwater 3795** (W&CA 1981, S53) – 315m of new public footpaths

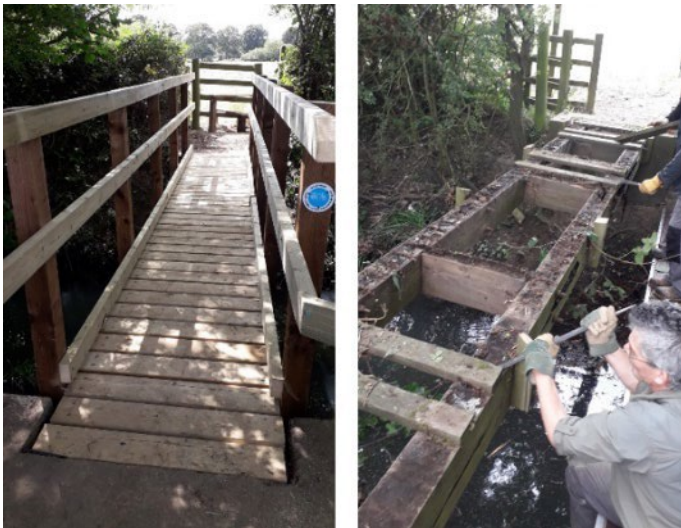
6.2 Staff in WSCC Legal Services have recently completed a major piece of work to do legal event modification orders covering changes to the Definitive Map that have already taken place under some other legislation, including creations, diversions and extinguishments. This had not been done for many years. Going forward the intention is to include provisions in orders made to change rights of way that have the effect of modifying the definitive map and

statement at the same time. This will remove the need for the authority to make a separate 'legal event' modification order.

- 6.3 Information about the Planning and Rights of Way Committee, including meeting dates and papers can be found on the [Planning and Rights of Way Committee web pages](#).

7. Update on selected WSCC Rights of Way work

- 7.1 **Volunteer work** - Volunteer rangers have been busy replacing bridges in Crawley, East Grinstead and Nuthurst (photo below), and have also stabilised embankments, cleared vegetation and repaired a stile.
- 7.2 In Barnham, 800m of vegetation was cut back and the volunteers removed a recently fallen tree. 12 tonnes of stone, supplied by the Parish Council, was added to a footpath surface in Felpham. In Southwater, nearly 2km of path was cleared, re-graded and surfaced to make it usable and ditches and culverts were cleared to aid drainage.



- 7.3 Bridge on Fp 780_1. A large bridge over the River Arun was recently replaced on the Billingshurst/ Wisborough Green border as part of our Capital Programme. The bridge was craned into position (see photo).



8. What Are Paths Worth, Ramblers

- 8.1 The Ramblers have carried out [research](#) showing the value of the path network in England and Wales. It shows that usage of the network adds over 3,000 healthy years of life to the nation, worth an estimated £2 billion per year, or over £33 per person. It also found there is significant imbalance between the number of paths available to the most and least deprived communities.

9. Bramber Brooks, Horsham District Council

- 9.1 Horsham District Council is set to acquire Bramber Brooks, 34 acres of green space on land in the south of Horsham District for the benefit of local communities and to provide a vital boost to local biodiversity. The site, is currently enjoyed by many members of the public, but this will secure it as public green space for the future in order to retain the community benefits of the land and enhance biodiversity on the site, ensuring that it will continue to operate as a well-loved and much enjoyed area for people to enjoy.

10. WSLAF Future Meetings

- 10.1 All formal meetings usually start at 10.30am. Future dates will be advised, but are expected around:
- Informal: January 2024
 - Formal: April 2024, Chichester
 - Informal: July 2024
 - Formal AGM: April 2024

11. Neighbouring Local Access Forums (LAFs)

- 11.1 Meeting papers and other information about neighbouring Forums can be found by following the links below:
- [South Downs Local Access Forum](#) (SDLAF)
 - [Brighton & Hove Local Access Forum](#)
 - [East Sussex Local Access Forum](#) (ESLAF)
 - [Hampshire Countryside Access Forum](#) (HCAF)
 - [Surrey Countryside Access Forum](#) (SLAF)

Jane Noble, Forum Officer