

Early Years and Childcare Training and Events





West Sussex Early Years Training and Events 2023 - 2024

West Sussex Early Years Training and Events offer a comprehensive and engaging programme of high quality training at affordable prices. Content is based upon feedback from Early Years practitioners and subject specialists, as well as research into themes from Ofsted and local and national drivers.

Training is provided in the following areas:

- ❖ Safeguarding and Child Protection
- ❖ Paediatric First Aid
- ❖ SEND, Inclusion and Vulnerable Families (including Makaton)
- ❖ Improving EYFS Outcomes and Quality Provision
- ❖ Leadership and Management
- ❖ Early Years Networks
- ❖ Business Support

The benefits of purchasing training from us:

- ❖ Access to a range of high-quality inspirational training and support
- ❖ Up to date content which reflects the current government and Ofsted trends
- ❖ Subsidised fees which reduce the cost to you
- ❖ Content reviewed and quality assured
- ❖ All your staff hear the same message, which improves consistency and team working

To improve access to our training, courses are offered to you in a range of ways:

- ✓ Face to face
- ✓ Virtual delivery using Microsoft Teams or Zoom with an online trainer
- ✓ Whole setting training – available in-house either online or at your setting
- ✓ E-learning bitesize courses that can be studied at your convenience
- ✓ Courses are delivered at different times of the day and on different days of the week

As well as offering West Sussex County Council subject specialists, we also commission a range of training providers to deliver our programme. This year we are delighted to be working with:





Contents

West Sussex Early Years Training and Events 2023 - 2024	1
Accessing the Learning and Development Service.....	6
Accessing Webinars.....	6
Pre-course Tasks.....	7
Contact Us.....	7
Learning and Development Service	7
Early Years Training team	7
Early Years Annual Conference and Childminder Conference.....	7
Safeguarding and Child Protection.....	8
Safeguarding and Child Protection for Early Years and Childcare Practitioners	8
Safeguarding and Child Protection for the Designated Safeguarding Person in Early Years Settings	8
Safeguarding and Child Protection in Early Years Refresher	9
Safeguarding and Child Protection Designated Refresher Training for Childminders	9
Paediatric First Aid	11
Paediatric First Aid Blended Learning (6 hours online* + 1 day face to face).....	11
SEND, Inclusion and Vulnerable Families.....	11
Inclusive Practices.....	12
Exploring inclusive practice	12
Making a difference to disadvantage	13
Role of the Inclusion Coordinator	14
Theraplay Informed Workshops for Settings	14
Theraplay Inspired Workshop	14
The Impact of Trauma – Through the eyes of a child – Online Virtual Reality Demonstration session for Early Years Leaders	15
Virtual Reality Headset Trauma Awareness Training - Build a Beautiful Brain Session for Early Years staff	15
Trauma Informed Bitesize Training	16
Trauma Informed Bitesize Training– You’ve got a friend in me	16
Trauma Informed Bitesize Training– The same but different.....	16
Trauma Informed Bitesize Training– Ahh there’s a bear!	16
Trauma Informed Bitesize Training– 999 What’s your emergency?	16
Working with Vulnerable Families	17
Working with children who have English as an Additional Language (EAL).....	17
Communication and speech.....	18



Makaton Courses	18
Makaton Taster	18
Makaton Foundation Level 1.....	18
Makaton Foundation Level 2.....	19
Makaton Foundation Level 1 and Level 2	19
Communication friendly early years setting	20
Talking clearly - supporting the development of children's speech sounds	20
Improving EYFS Outcome and Quality Provision	21
A Look at Our Words - The impact of what adults say	21
A Look at the 1, 2, 3's of Counting.....	21
A Look at Writing Readiness and Pencil Grip.....	21
Best for Babies	22
Best for Boys	22
Calling All Superheroes! Exploring self-regulation, creative play, and physical expression.....	23
Christmas crafts - Mass production or creativity?	23
Clap, Play, Sing your Way to Literacy	23
Collaborative and Respectful – Communicating with parents	24
Courageous Creativity: Playfully engaging young children with learning after deprivation or trauma	24
Demystifying Cultural Capital for the early years	25
Developing high quality learning environments for two year olds	25
Discovering Maths – Every day and everywhere	26
Diversity, Identity and Culture	26
EYFS Essentials.....	26
Five to Thrive Essentials	27
Five to Thrive follow up - Let's focus on talk.....	27
Five to Thrive follow up – Cuddle and Play	28
In the Moment Planning.....	28
Child Development.....	29
Essential Child Development - Beginning with babies (0-2 years)	29
Essential Child Development - Talking about toddlers (2-3 years).....	29
Essential Child Development - Playful pre-schooler (3-4 years)	29
EYFS Assessment – Manageable and Meaningful.....	30
Lifelong Readers – Loving, Reading, Loving Life!	30
Ofsted – Are you ready?.....	31



Opening Up Children's Encounters with Books	31
On Your Marks, Get Set, Write!.....	32
Active, Healthy and Learning - Understanding Physical Development.....	32
Playful Percussion	32
Prioritising children's wellbeing	33
Ready, willing, and able. Supporting the development of the Characteristics of Effective Learning	34
Refreshing My Work - Do I understand EYFS Pedagogy and the Characteristics? ..	34
Roll out the role play	35
Roots to Resilience - making your outdoor provision outstanding	35
Sound and Secure - Essential early phonics for 3 and 4 year olds.....	36
Story Stuff – Impromptu Story Making	36
Understanding and Responding to Children's Behaviour	37
Nurturing Self-Regulation	37
Leadership and Management.....	38
Effective Leadership - New Manager Support.....	38
Financial Planning for Early Years and Childcare Providers	38
Leaders Course: The Bigger Picture – Assessment Considerations.....	38
Leaders Course: Understanding Positive, Proactive and Effective Leadership	39
Leadership and Management - Following the Leader.....	39
Marketing for Early Years and Childcare Providers.....	39
Mental Health Awareness.....	40
Staff Supervision for the Early Years (as required by the EYFS)	40
Find out more about our Training Providers.....	43
Children at Heart	43
Enable Children	43
Hempsalls.....	43
In-Trac Training and Consultancy Ltd	43
Linden Learning	44
Pulse First Aid Ltd.....	44
STEP Consultancy	44
West Sussex Speech and Language Specialist Team (SaLSS)	45
Terms and Conditions.....	46
Payment	46
Bookings	46
Cancellations and Substitutions*	46



Un-booked Attendance.....	47
Attending the Event.....	47
Attendance Register and Certificates.....	48
Disclaimer	48



Accessing the Learning and Development Service

Booking Places – Webinar and Face to Face Courses

All our face to face courses and webinars can be found on the Learning and Development Service:

<https://westsussexcpd.learningpool.com>

To book, you need an account:

If you had a Learning and Development account on the old system which has been used within the last twelve months, your details will have been migrated to the new platform, but you may need to reset your password. If you had an account but may not have used it within the last twelve months, you will need to either reset your password or create a new account. If you have never had an account, you will need to create one. For all account access, see below:

1. Go to Learning and Development Booking System
<https://westsussexcpd.learningpool.com/>
2. Click 'External User.'
3. Log in using your details – at this point you will either have access to the system or be prompted to reset your password, see next steps.
4. To reset your password, click on the Forgotten your Username or Password box.
5. Search for your email address to reset your password. You can also reset your Username if necessary.
6. Changes can take up to 48 hours to process and you will receive an email once complete.

If you need assistance with any aspect of the above or need line manager booking rights reinstated, please email

learninganddevelopment@westsussex.gov.uk

To find courses:

1. Select 'Find Learning.'
2. Enter a key word from the course title into the Search box and click the magnifying glass icon.
3. Select 'Go to course.' If you have not viewed the course previously, you may have to select 'Enrol me' to view the dates and details. This does not mean you have booked a place.
4. To book, select 'Book an Event,' this will bring up a list of course dates.
5. Select 'Sign-up' to request a place.
6. Your place will be confirmed by email which will include the course information.
7. Links for online courses will be emailed two days before the course date and will not be in the initial confirmation email.

Delegates and their managers are both able to book delegate places.

At the time of writing, the ability to take payments when booking had not been resolved. Payment will be requested after the course, details to be confirmed.

Accessing Webinars

A webinar is a live, online course led by a trainer. You must have access to a computer or tablet, a stable internet connection and a web camera with microphone to participate. Mobile phones are unsuitable due to their small screens and lack of functionality.





The joining link will arrive two days before the course date and will not be in the initial confirmation email. Please check your junk mail. If you cannot find this email, please contact the Early Years Training and Events team.

Please open Learning and Development emails on a computer or tablet as links and attachments may not be visible on a mobile phone.

Courses will be hosted on Microsoft Teams or Zoom. You will need to create a free account to participate. Details of which system is needed are in the course description on the Learning and Development Service.

Pre-course Tasks

Certain courses have a compulsory pre-course tasks such as a short reading or gathering an item from your setting to bring to the course. The task must be completed before attending to gain a certificate. Details of pre-course tasks are found on the course description on the Learning and Development Service and in course place confirmation email. Please make sure you check this as soon as you receive it.

Contact Us



Learning and Development Service

Use this contact information for queries relating to issues with course access, account resets, new accounts, line manager access or staff booking.

01243 756834

learninganddevelopment@westsussex.gov.uk

Early Years Training team

Use this contact information for course content queries or advice about training. Our Facebook page also offers advice, booking information and training offers.

0330 2225904

early.years.training@westsussex.gov.uk

facebook

<https://m.facebook.com/WSEYT>

Early Years Annual Conference and Childminder Conference

We try to host two conferences per year, one specifically for Childminders and one for Settings and Childminders. Please check back here to find out when the 2024 dates will be.



Safeguarding and Child Protection

Our Safeguarding courses are developed in collaboration with West Sussex Safeguarding Children Partnership, the LADO, the Integrated Front Door, and safeguarding experts within the sector. They cover safeguarding practices and draw out themes from Ofsted and Serious Case Reviews. The courses are delivered on behalf of West Sussex County Council by Rebecca Martland from Children at Heart and Juliette Francis from In-Trac. Safeguarding is a mandated course for all practitioners and should be refreshed regularly to ensure staff are confident.

Safeguarding and Child Protection for Early Years and Childcare Practitioners

Aims: An essential introduction to early years safeguarding for all practitioners providing a greater awareness of safety and welfare.

Learning Objectives: If you apply what you have learnt you will be able to:

- define Child Protection and Safeguarding and your role within safeguarding.
- identify the four types of abuse, recognising the indicators and how this may present.
- identify the key documents that support you in your role in safeguarding and where you can find these.
- demonstrate how to record and evidence concerns.
- describe the importance of acting on safeguarding concerns and know the local reporting process.
- identify and follow the process of escalating unresolved concerns.

Cost: £27 per person



Safeguarding and Child Protection for the Designated Safeguarding Person in Early Years Settings

Aims: The aim of this course is to raise awareness and confidence in your safeguarding responsibilities and be able to recognise when and how to make appropriate referrals.

Learning Objectives: If you apply what you have learnt you will be able to:

- explain the role and responsibilities of the designated safeguarding lead within early years.
- identify the key legislation relating to the safeguarding and protection of children.
- reflect on practice relating to safeguarding and child protection procedures.
- explain the referral process to Integrated Front Door (IFD)
- explain how to report allegations against a member of staff or volunteer in relation to LADO.

Cost: £17 per person



Safeguarding and Child Protection in Early Years Refresher

Aims: This course is for practitioners who have previously attended a Safeguarding and Child Protection Training. A refresher is recommended every 2 to 3 years.

Learning Objectives: If you apply what you have learnt you will be able to:

- identify the signs and indicators of abuse and neglect and know how to respond.
- apply knowledge of child development to support the identification of concerns for a child's well-being.

Cost: £17 per person

Safeguarding and Child Protection Designated Refresher Training for Childminders

Aims: This course provides essential refresher training for childminders to support you to safeguard and protect children in your role as a Designated Safeguarding Lead for your setting. It is **unsuitable** for safeguarding in settings.

Learning Objectives: If you apply what you have learnt you will be able to:

- define Child Protection and Safeguarding and your role within safeguarding.
- recognise the main indicators of abuse, and record and evidence concerns.
- make effective referrals to the Integrated Front Door, including use of the West Sussex Continuum of Need to support your decisions.
- manage allegations, including against you or your family. Demonstrate an awareness of the LADO (Local Area Designated Officer) within this process.

Cost: £17 per person

LADO Introduction

Aims: This eLearning module is for anyone who has contact with adults who work or volunteer with children and/or young people in West Sussex. It familiarises you with what to do when you have concerns about an adult's behaviour towards children and/or young people.

Learning Objectives: If you apply what you have learnt you will be able to:

- recognise inappropriate behaviour by adults aged 16 and over.
- confidently share your concerns in the right way.
- explain the role of the LADO and list what you should refer to the LADO.
- describe how allegations and safeguarding concerns are managed.
- plan your next steps in protecting the children and young people.

Cost: £0 (Subsidised by West Sussex County Council)

The Role of the LADO in Keeping Children Safe

Aims: Explore the role of the Local Authority Designated Officer (LADO). Identify and define what an allegation is and know what to do if an allegation is made against a professional. Look at how to keep children safe when they meet adults in organised environments. Ask questions and engage in multi-agency discussions.

Before attending please read the case studies found in 'Resources' section of the course.

Learning Objectives: If you apply what you have learnt, you will be able to:

- identify the role of the LADO and when you should contact them.



- follow the correct process when an allegation is made against an individual.
- use your knowledge to feedback the key messages to your agency/organisation.

Cost: £0 (Subsidised by West Sussex County Council)

Here's what people said about Safeguarding Training

- **100%** of delegates agreed that the content was what they expected.
- **98%** would recommend to a colleague.





Paediatric First Aid

Delivered by Pulse First Aid

Paediatric First Aid Blended Learning (6 hours online* + 1 day face to face)

Aims: This course is compliant with Ofsted and the EYFS guidelines and is accredited by the First Aid Industry Body (FAIB).

The aim is to raise your awareness of situations likely to occur when looking after children which require First Aid and appropriate strategies to successfully resolve them.

You must complete the online learning course before attending the face to face. There is a level of physical ability required to complete this course successfully. In order to carry out the practical elements you will need to be able to work on the floor at various times during the day. It is recommended that you refresh this training every 3 years.

Learning Objectives: If you apply what you have learnt you will be able to:

- help with variety of injuries, reactions, or attacks.
- identify the role and responsibilities of the paediatric first aider.
- assess the appropriate contents of a first aid box.
- understand how to record accidents and incidents.

*You will be issued a log in to access pre course material. Once it is used, we will be unable to offer a refund if you are unable to attend.

Cost: £84 per person

Here's what people said about Paediatric First Aid

- "I now feel confident in providing a child with first aid, should it be required in my setting".
- "I am so pleased I attended. I have refreshed my approach to various injuries or incidents that might occur. I am aware of signs and symptoms and how I can help a child effectively".





SEND, Inclusion and Vulnerable Families

We offer courses to develop and extend skills in inclusive practice and supporting communication.



Inclusive Practices

Exploring inclusive practice

Delivered by Enable Children Ltd

Aims: This stimulating and interactive course explores our attitudes to inclusion and unconscious bias. Learn how to develop inclusive practice and provision in order to give children the best start in life. Formerly 'Practical Steps, Positive Outcomes. Exploring inclusive practice.

Learning Outcomes: If you apply what you have learnt you will be able to:

- reflect on your own and others' attitudes to inclusion to discuss successes and challenges and review provision and practice in your setting.
- identify barriers to inclusion and consider planned support that has positive impact.

Cost: £54 per person

Early Years Inclusion Support Plan - An Overview

eLearning

Explore what an EYISP is, when you would start one and give you an overview of the contents of the EYISP.

eLearning courses have been developed by West Sussex County Council to support setting practice. No booking is needed, simply enrol on Learning and Development, and complete the course.

Cost: £0 (Subsidised by West Sussex County Council)

Early Years Inclusion Support Plan - Gathering Information to Share with Others

eLearning

Explore how to pull together information from your Early Years Inclusion Support Plans ready to share with others.

eLearning courses have been developed by West Sussex County Council to support setting practice. No booking is needed, simply enrol on Learning and Development, and complete the course.

Cost: £0 (Subsidised by West Sussex County Council)

Early Years Inclusion Support Plan - Individual Planning

eLearning

Explore your settings can plan for individual children and their developmental needs.

eLearning courses have been developed by West Sussex County Council to support setting practice. No booking is needed, simply enrol on Learning and Development, and complete the course.

Cost: £0 (Subsidised by West Sussex County Council)



Early Years Inclusion Support Plan - Specialist Planning

eLearning

Explore the specialist support and planning that you may need to put in place for a child attending your setting.

These eLearning course have been developed by West Sussex County Council to support Early Years settings. No booking is needed, simply enrol on Learning and Development and complete the course.

Cost: £0 (Subsidised by West Sussex County Council)

Working with Young Carers and their Families

eLearning

The aim of this module is to support you in developing a knowledge and an awareness of how to identify that a child may be a young carer and the impact that this caring role can have on them, and enable you to support them and their families effectively.

It will enable you to gain an understanding of the work of the Young Carers Family Service and how you can access further support and guidance.

These eLearning course have been developed by West Sussex County Council to support Early Years settings. No booking is needed, simply enrol on Learning and Development and complete the course.

Cost: £0 (Subsidised by West Sussex County Council)

Making a difference to disadvantage

Delivered by Enable Children Ltd

Aims: How can we break the 'cycle of disadvantage'? How can we make a real difference in the lives of vulnerable children?

A key priority in the revised EYFS (2021) is to narrow the gap between children who are disadvantaged and the rest. This informative and thought-provoking course considers what disadvantage is and the impact it has on children's outcomes. It encompasses what to do and what to provide in order to achieve ongoing high quality, inclusive practice which makes a genuine difference to tackling disadvantage.

Learning Outcomes: If you apply what you have learnt you will be able to:

- identify children who are at risk of falling behind in their learning.
- understand the key issues in supporting vulnerable children, including their wellbeing, and responding to their needs and views through hearing their unique voice.
- have a heightened awareness and knowledge of practical strategies to include and engage all children, particularly those who are disadvantaged to minimise attainment gaps.

Cost: £54 per person





Role of the Inclusion Coordinator

Delivered by Hemsalls

Aims: This course will clarify the expectations of the role and explore what these might look like in practice. It seeks to support you to develop your understanding of the INCO role, to explore current and effective practice and to consider skills that may be needed to deliver this in the setting. Practical activities and group discussions promote and share ideas. This course has two parts, you must attend both parts to gain your certificate.

Learning Objectives: If you apply what you have learnt you will be able to:

- recognize what inclusion is and what it means in a setting.
- explain what both the code of practice and Government guidance says about the role of the inclusion coordinator and how these might look in practice.
- highlight examples of excellent practice and understand ways to apply this to the setting.
- plan and execute successful parent/carers meetings.

Cost: £54 per person

Theraplay Informed Workshops for Settings

Delivered by West Sussex County Council's The Virtual School

Aims: This workshop will introduce you to Theraplay principles and activities. These activities help children develop relationships with trusted key adults, build self-worth and develop skills to be able to interact with peers.

Learning Outcomes: If you apply what you have learnt you will be able to:

- identify the core concepts of Theraplay
- carry out practical activities based on the 4 dimensions of Theraplay
- incorporate Theraplay activities in your setting.

Cost: £0 (Subsidised by The Virtual School)



Theraplay Inspired Workshop

Delivered by West Sussex County Council's The Virtual School

Aims: Theraplay is a therapeutic intervention provides simple, structured play experiences for a child and a key attachment. The goal is to enhance attachment, self-esteem, trust in others through joyful engagement. This workshop is based on Theraplay activities and principles and will provide a mixture of watching and participatory practical activities. Activities can be delivered in both 1:1 and in larger groups. These activities help children develop relationships with trusted key adults, build self-esteem and develop skills to be able to interact with peers.

Learning Outcomes: If you apply what you have learnt, you will be able to;

- explain the concepts of Theraplay.
- incorporate Theraplay activities in your setting based on the four dimensions.

Cost: £0 (Subsidised by The Virtual School)



The Impact of Trauma – Through the eyes of a child – Online Virtual Reality Demonstration session for Early Years Leaders

Delivered by West Sussex County Council's The Virtual School

Aims: This webinar will show you the 2D screening of the Early Years Trauma Awareness VR Training – Building a Beautiful Brain. You will explore how Virtual Reality can enhance learning about trauma and how best to introduce this to your staff in a safe and supported way.

This course was formerly: Virtual Reality Demonstration Session for Early Years Leaders

Learning Outcomes: If you apply what you have learnt you will be able to:

- explain the contents of the Trauma Awareness VR Training
- consider how best to introduce staff to this training.

Cost: £0 (Subsidised by The Virtual School)

Virtual Reality Headset Trauma Awareness Training - Build a Beautiful Brain Session for Early Years staff

Delivered by West Sussex County Council's The Virtual School

Aims: You will gain a greater awareness of how traumatic experiences impact all areas of development and learning. The session uses Virtual Reality (VR) headsets to show films which place you the viewer in the position of a child experiencing trauma. You do not see physical violence.

You will also explore key themes, such as 'Adverse Childhood Experiences' (ACEs) and their subsequent impact. You will consider the use of the therapeutic response

'Playfulness, Acceptance, Curiosity and Empathy' (PACE). **Please note** you can only book once your manager has attended 'Virtual Reality Demonstration Session for Early Years Leaders'.

Learning Outcomes: If you apply what you have learnt you will be able to:

- recognise the impact of traumatic events on learning and development.
- use strategies to support children.

Cost: £0 (Subsidised by The Virtual School)





Trauma Informed Bitesize Training

Aims: These 1 hour training sessions address a variety of topics that are specific to Early Years. They will be delivered through a trauma-informed lens and will discuss therapeutic strategies and interventions to support children in Early Years settings. The training sessions are for any staff working in Early Years Settings. These sessions are shorter versions of the termly support groups, covering similar topics.

Delivered by West Sussex County Council's The Virtual School

Trauma Informed Bitesize Training– You've got a friend in me

Learning Outcomes: If you apply what you have learnt you will be able to;

- Understand the impact of relationship disruption.
- Identify qualities in the attuned adult.
- Have a greater understanding of the therapeutic approach PACE.

Cost: £0 (Subsidised by The Virtual School)

Trauma Informed Bitesize Training– The same but different

Learning Outcomes: If you apply what you have learnt you will be able to;

- Understand the impact of changes.
- Identify things that are needed for a successful transition.
- Have a greater understanding of secure base.

Cost: £0 (Subsidised by The Virtual School)

Trauma Informed Bitesize Training– Ahh there's a bear!

Learning Outcomes: If you apply what you have learnt you will be able to;

- Recognise the impact of early trauma.
- Understand Dr Bruce Perry's 5 states.
- Have a greater understanding about toxic shame and its impact.

Cost: £0 (Subsidised by The Virtual School)

Trauma Informed Bitesize Training– 999 What's your emergency?

Learning Outcomes: If you apply what you have learnt you will be able to;

- Use strategies to support children when they are dysregulated.
- Understand Dr Bruce Perry and Louise Bomber's 4 R's (Regulate, Relate, Reason, Repair)
- Recognise Window of Tolerance and support children to stay on theirs

Cost: £0 (Subsidised by The Virtual School)





Working with Vulnerable Families

Delivered by Hemsalls

Aims: To provide with support and strategies for working with vulnerable families with children aged birth to 14 years, including supporting lone parents, working parents, families with English as an additional language, and families on low incomes.

It focuses on identifying needs, achieving reach, and working with other professionals and agencies for better outcomes for all children. The training explores the impact high quality provision can have on vulnerable children's achievement and the home learning environment.

Learning Outcomes: If you apply what you have learnt you will be able to:

- understand and apply strategies.
- identify need, achieve reach, and work with other professionals and agencies.

Cost: £54 per person



Working with children who have English as an Additional Language (EAL)

Delivered by Hemsalls

Aims: This training examines the importance of celebrating children's individual language development, and how their needs can be met through offering a range of play and learning opportunities.

It outlines best practice, resources, routines, activities, and experiences that can be provided to support children and work in partnership with their parents. This webinar will also explore the importance of policies and practice and working within an anti-discriminatory framework.

Learning Outcomes: If you apply what you have learnt you will be able to:

- understand the needs of children with English as an additional language.
- better support parents in partnership
- know where to gain further support.
- support anti-discriminatory practice in the setting.

Cost: £27 per person



Communication and speech

Makaton Courses

We offer a suite of Makaton courses, delivered by Sheila Inwards from Step Consultancy.

Makaton Taster

Aims: This basic introduction to Makaton will raise your awareness of nonverbal communication and how Makaton can support it to be more effective and meaningful. You will receive materials to support your learning.

Learning Objectives: If you apply what you have learned you will be able to:

- describe the feelings and emotions associated with a communication difficulty.
- describe how Makaton can make communication more effective and meaningful.
- evaluate individual Makaton user's language and vocabulary needs.

Cost: £32 per person

Makaton Foundation Level 1

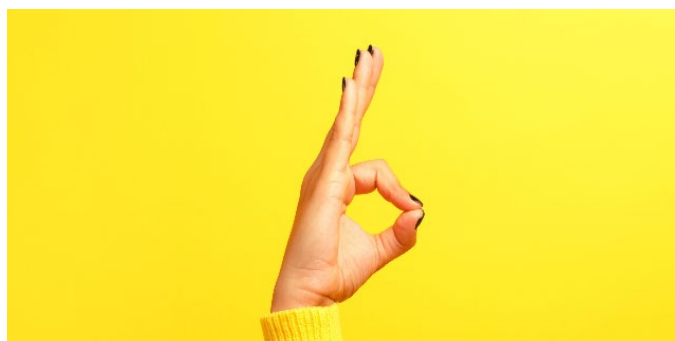
Aims: This course is accredited by Makaton.org. You will receive a high quality booklet to support your learning and a certificate of completion. It provides a detailed introduction to Makaton Foundation Level 1, which combines a practical approach with theory and technical information. In addition, it offers an experiential introduction to communication disability.

Learning Objectives: If you apply what you have learned you will be able to:

- describe the use and purpose of Makaton.

- describe emotional and psychological effects associated with communication difficulties.
- use multi modal forms of communication including signs, symbols, speech, and body language to convey information.
- organise information to convey it to others and extend interactions.
- understand and use the signs and symbols included in this level.
- use direction, placement, and movement during non-verbal communication.
- recognise, draw, and demonstrate the signs and symbols for Stages 1, 2 and part A of the additional stage from the core vocabulary.

Cost: £84 per person





Makaton Foundation Level 2

Aims: This course is accredited by Makaton.org. You will receive a high quality booklet to support your learning and a certificate of completion.

It provides a detailed introduction to Makaton Foundation Level 2, which combines a practical approach with theory and technical information.

You must have completed Makaton Foundation Level 1 before attending.

Learning Objectives: If you apply what you have learned you will be able to:

- use non-verbal communication to convey information.
- organise information to convey it to others and extend interactions.
- use direction, placement, and movement during non-verbal communication.
- recognise, draw, and demonstrate the signs and symbols for Stages 3-4 and additional Core Vocabulary.
- **Cost:** £84 per person

Makaton Foundation Level 1 and Level 2

This course combines the Level 1 and Level 2 Makaton Foundation and is aimed at professionals who prefer a face-to-face training.

This course is accredited by Makaton.org. You will receive a high quality booklet to support your learning and a certificate of completion. You must attend both parts to gain your certificate.

Learning Objectives: If you apply what you have learned you will be able to:

- use non-verbal communication to convey information.
- organise information to convey it to others and extend interactions.
- use direction, placement, and movement during non-verbal communication.
- recognise, draw, and demonstrate the signs and symbols for Stages 1 to 4 the additional stage from the core vocabulary.

Cost: £170 per person





Communication friendly early years setting

Delivered by West Sussex Speech and Language Specialist Team (SaLSS)

Aims: This course will enable you to promote a Communication Friendly environment in your setting. Look at how, when, and why to include signing, pictures, and other visual support in your daily activities to promote children's speech and language development. All delegates must have basic Speech and Language training or have attended either Talking Clearly or Practical Communication Activities.

Learning Outcomes: If you apply what you have learnt you will be able to:

- apply adjustments to your setting so that it is communication friendly.
- understand why visuals and signing can support children's speech and language development.
- perform an annual audit of your setting so that it continues to maintain its standard as a communication friendly environment.

Cost: £17 per person



Talking clearly - supporting the development of children's speech sounds

Delivered by West Sussex Speech and Language Specialist Team (SaLSS)

Aims: You will learn to understand how speech sounds and attention and listening skills develop in young children. You will explore a range of strategies and approaches which promote the development of attention and listening skills, clear speech, and pre-literacy skills.

Learning Outcomes: If you apply what you have learnt you will be able to:

- explain speech and language development and how you can have a positive effect on this.
- identify children who may need additional support and find strategies to support them.

Cost: £17 per person



Improving EYFS Outcome and Quality Provision

Chosen to meet the needs of West Sussex settings following Ofsted Inspection feedback and in consultation with internal experts and the sector, these courses will support practitioners to deliver high quality of provision in all aspects of the EYFS.

A Look at Our Words - The impact of what adults say

Delivered by Enable Children Ltd

Aims: Enhance understanding of the significance and impact of adults' words and interactions upon children.

Learning Outcomes: If you apply what you have learnt you will be able to:

- review current practice in your setting, to identify positive interaction behaviours and ensure that unconscious bias and possible embedded assumptions are tackled in your setting.
- enhance your own spoken and unspoken messages to optimise impact upon children's motivation, empathy, learning, sense of identity and self-esteem.
- benefit individuals and groups of children in your setting by sharing best practice with colleagues and embedding high quality interactions in your setting.

Cost: £17 per person

A Look at the 1, 2, 3's of Counting

Delivered by Enable Children Ltd

Aims: For practitioners working with 2 to 5 year olds. Consider how children learn the mathematical concepts of number and counting and how this process can be supported by the skilled and sensitive adult.

Learning Outcomes: If you apply what you have learnt you will be able to:

- recognise the significance of your role in providing appropriate number resources.
- be equipped to engage in high quality interactions using appropriate gesture and mathematical vocabulary when counting with young children.

Cost: £17 per person

A Look at Writing Readiness and Pencil Grip

Delivered by Enable Children Ltd

Aims: For practitioners working with 3 and 4 year olds in the pre-school sector. The aim is to understand typical developmental stages and needs in children's journey towards becoming confident and competent at writing.

Learning Outcomes: If you apply what you have learnt you will be able to:

- strengthen your professional knowledge and ability to provide appropriate and enjoyable mark making resources and activities.
- implement skilled adult behaviours which enhance children's learning and development regarding mark making and early writing.

Cost: £17 per person





Best for Babies

Delivered by Enable Children Ltd

Aims: For practitioners working with children aged birth to two years. This stimulating and engaging course seeks to support your practice and provision in threading responsive and playful interactions throughout a baby's day. It includes exploration of learning and development for under two's considering attachment, attunement, communication and physical development plus schemas, treasure baskets and heuristic play.

Learning Outcomes: If you apply what you have learnt you will be able to:

- create a responsive and stimulating learning environment and meaningful interactions that meet the needs of under twos.
- apply your knowledge of learning and development to offer schema opportunities, develop treasure baskets and encourage heuristic play.
- identify good practice and provision when working with babies.

Cost: £54 per person



Best for Boys

Delivered by Enable Children Ltd

Aims: To explore how to effectively support boys' wellbeing, learning and achievement.

Learning Outcomes: If you apply what you have learnt you will be able to:

- heightened awareness of best practice in supporting boys' engagement, learning and development
- appreciation of the importance of the adult role in valuing the interests, fascinations and learning preferences of boys, as well as girls
- being confident and motivated to work with colleagues in reviewing current practice and developing a setting-wide, consistent approach to promoting boys' engagement and progress.

Cost: £54 per person





Calling All Superheroes! Exploring self-regulation, creative play, and physical expression

Delivered by Linden Learning

Aims: Children are surrounded by stories of real-life heroism and fictional superheroes which many may emulate. However, this type of play is not without its challenges. We often see children engaging in rough and tumble or playing with weapons and it is difficult to know how to respond appropriately. This course will address these issues and encourage delegates to discover its links with self-regulation, creative play, and physical expression.

Learning Outcomes: If you apply what you have learnt you will be able to:

- explain the benefits of superhero play in your environment.
- discuss controversial notions such as weapon play, death and killing.
- implement this play in terms of positive relationships and enabling environments.
- encourage children to find their superpowers.

Cost: £27 per person

Christmas crafts - Mass production or creativity?

Delivered by Enable Children Ltd

Aims: In this stimulating session consider how and why children might go about making cards and craft items for Christmas and other festivals.

Best practice examples and hands-on activities will support understanding of what works best for children and how to meet their needs whilst avoiding prescriptive, 'production line' approaches. Learn to deal professionally with expectations from parents or colleagues.

Learning Outcomes: If you apply what you have learnt you will be able to:

- provide exciting seasonal 'making experiences' that are fully in line with EYFS best practice.
- ensure that parents and practitioners have a shared understanding of age appropriate seasonal experiences.

Cost: £27 per person

Clap, Play, Sing your Way to Literacy

Delivered by Enable Children Ltd

Aims: To explore and embed effective and appropriate physical and musical practices which underpin children's early literacy development. To provide a secure understanding of the principles of successful literacy teaching and learning in the early years.

Learning Outcomes: If you apply what you have learnt you will be able to:

- provide appropriate and stimulating opportunities which foster and encourage children's progress in communication and literacy.
- Successfully plan and embed playful physical activities, rhymes, games, and songs which promote specific aspects of literacy development.

Cost: £27 per person





Collaborative and Respectful – Communicating with parents

Delivered by Enable Children Ltd

Aims: This course offers innovative and illuminating insights and case studies which draw upon best practice and build confidence and competence in the skills of conducting respectful, collaborative, and professional communication with parent/carers. This course builds familiarity with relevant guidance from a range of sources.

You'll explore possible barriers and identify manageable approaches to embedding protocols and strategies which ensure that discussions between parents and practitioners are comfortable, informative, and productive with a strong focus on identifying and supporting children's individual needs.

Please note: This new course contains fresh materials plus some elements from No Shocks, No Surprises. Please bear this in mind when deciding whether to attend.

Learning Outcomes: If you apply what you have learnt you will be able to:

- strengthen implementation of effective communication behaviours and strategies which support a child/person centred approach.
- embed confidence and clarity related to professional responsibilities and behaviours in the context of interactions with parents and carers.
- implement strategies to ensure smooth lines of communication and minimise potentially difficult conversations with parent/carers about their child's learning and development.

Cost: £27 per person

Courageous Creativity: Playfully engaging young children with learning after deprivation or trauma

Delivered by Linden Learning

Aims: This course will support you in re-engaging with children who have suffered deprivation or trauma as a result of lock down, or who have experienced Post Traumatic Stress or who are new refugees.

This two part, face to face course offers presentations followed by practical, hands-on workshops. You will learn how to use imaginative, playful, and creative techniques which you can replicate within your setting.

Learning Outcomes: If you apply what you have learnt you will be able to:

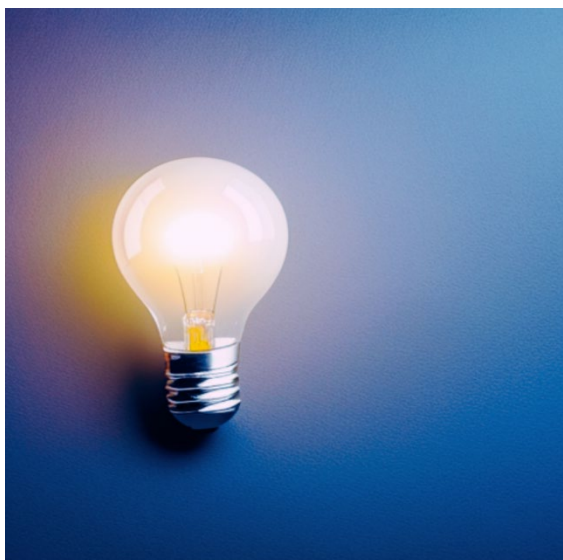
- support the growth of imagination with active story-telling and related small-world play.
- foster high expectations for creativity by introducing Growth Mindset Theory in drawing and making contexts.
- promote holistic learning by actively working with parents/carers to provide tools to enhance screen-free play at home.
- demonstrate the skills of facilitating a creative workshop within your setting.





- encourage critical thinking with open-ended imaginative play challenges.

Cost: £54 per person



Demystifying Cultural Capital for the early years

Delivered by Linden Learning

Aims: The aim is to support you to understand what cultural capital is and how it is linked Ofsted's Education Inspection Framework (EIF) and the EYFS. You will learn to identify cultural capital 'moments.'

Learning Outcomes: If you apply what you have learnt you will be able to:

- define cultural capital and how it is used in early years.
- explain why it is included in the Ofsted's Education Inspection Framework (EIF) and how it is featured in the four principles of the EYFS.
- identify cultural capital 'moments' in the settings within everyday practice.

Cost: £17 per person

Developing high quality learning environments for two year olds

Delivered by Linden Learning

Aims: The aim is to support you to understand the key features of an effective, high quality learning environment for two year olds. You will explore the characteristics of effective learning and how to enable children to develop positive attitudes. You will gain an understanding of the practical ways to provide stimulating and challenging experiences for this age.

Learning Outcomes: If you apply what you have learnt you will be able to:

- describe the characteristics and needs of two year olds.
- define the characteristics of effective learning.
- support children to develop positive attitudes.
- encourage children's individual needs and interests.
- provide stimulating and challenging experiences for two year olds.
- reflect on current practice and to identify strengths and areas for further development.

Cost: £27 per person





Discovering Maths – Every day and everywhere

Delivered by Enable Children Ltd

Aims: High quality experiences of mathematics are the entitlement of every child. This stimulating course will support participants to effectively implement practical, affordable approaches that support children's mathematical development.

The course will explore key mathematical concepts in conjunction with the Characteristics of Effective Teaching and Learning and links with other areas of learning and development. Consideration will be given to supporting children's mathematical language through stories, songs, and rhymes.

Learning Outcomes: If you apply what you have learnt you will be:

- equipped and motivated to enhance the learning environment to positively contribute to mathematical exploration and learning.
- able to recognise the significance of adults engaging in high quality interactions and correct use of mathematical language with children.

Cost: £54 per person

Diversity, Identity and Culture

Delivered by Linden Learning

Aims: Explore equality and diversity issues within the context of the EYFS, with specific reference to gender identity and culture. Learn ways to become more inclusive and develop an awareness of unconscious bias and discrimination and their impact on the setting.

Learning Outcomes: If you apply what you have learnt you will be able to:

- define terms relating to LGBTQIA+, culture, equality, and diversity.
- be aware of the Equality Act 2010 and EYFS requirements that relate to this.
- as a setting, become more inclusive and aware of identity and culture reflect on how unconscious bias and discrimination may impact on your settings and life.

Cost: £27 per person



EYFS Essentials

Delivered by Enable Children Ltd

Aims: This important webinar is for returning staff and those new to the EYFS. Using slides, video footage and activities, the course seeks to support you in developing your knowledge and understanding of the key elements of the revised EYFS (2021).

Learning Outcomes: If you apply what you have learnt you will be able to:

- understand how the characteristics of effective teaching and learning and the prime and specific areas of learning and development are of crucial importance to children's learning and development.
- enhance your ability to meet the learning and development needs of children.
- **Cost:** £27 per person



Five to Thrive Essentials

Delivered by Enable Children Ltd

Aims: This webinar introduces the essentials of the Five to Thrive approach. It will support you in securing a sound understanding of brain development and the five building blocks of this highly regarded approach. You'll identify ways to develop meaningful and empowering adult and child relationships which boost children's confidence, self-esteem, resilience, and self-regulation.

Learning Outcomes: If you apply what you have learnt you will be able to:

- create an ethos in which the Five to Thrive agenda can be implemented in the home and the setting through practice, modelling and conversations with parents/carers.
- develop meaningful adult and child relationships, in order to help children feel confident, happy and secure, which have a positive impact on their resilience and ability and readiness to learn.
- provide well-informed and compassionate responses which support secure attachments and include the development of resilience, confidence, and self-regulation strategies.
- support parents and colleagues to implement Five to Thrive in the home and the setting.

Cost: £27 per person



Five to Thrive follow up - Let's focus on talk

Delivered by Enable Children Ltd

Aims: You must have previously attended the Five to Thrive Essentials and have a familiarity with the approach.

You will gain a secure understanding of 'Talk' building block of the Five to Thrive approach. Gain insights from best practice and research which explore links between early language and brain development and the impact of communication development upon social and emotional wellbeing, particularly of the most vulnerable.

Current research and case studies inform discussions of the vital role of adult-child interaction including reflecting on the impact of screen time, lock down and other contributory factors. Simple everyday skills and strategies are introduced which can be shared with parents and colleagues to have a positive effect on all aspects of child development, as well as wider family mental health and wellbeing.

Learning Outcomes: If you apply what you have learnt you will improve outcomes for children by:

- developing meaningful adult and child relationships, to help children feel confident, happy, and secure, which will have a positive impact on their resilience and ability and readiness to learn.
- supporting parents and colleagues to implement 'Talk' within 'Five to Thrive' in the home and the setting.

Cost: £27 per person



Five to Thrive follow up – Cuddle and Play

Delivered by Enable Children Ltd

Aims: You must have previously attended the Five to Thrive Essentials and have a familiarity with the approach.

This course will extend your professional knowledge and practical skills exploring two specific elements of Five to Thrive, namely, Cuddle and Play.

You will explore how professionals and families can best support children's needs related to nurturing relationships, physical development, and positive play. You will also look at practical approaches to working with children, particularly the most vulnerable and their families, to foster mental health, wellbeing, and social/emotional development.

Learning Outcomes: If you apply what you have learnt you will:

- improve outcomes for children by increasing your awareness of how varied and challenging physical experiences, as well as nurturing relationships, positively impact a child's mental health, wellbeing, and social development.
- deepen and extend your professional knowledge about the links between brain development and a range of calming and stimulating physical experiences.
- understand children's need for a variety of movement, whole body experiences and risk-taking with a range of resources and spaces.

Cost: £27 per person

In the Moment Planning

Delivered by Enable Children Ltd

Aims: This course is for anyone working in Early Years and will support you to develop your knowledge of the EYFS 'Observation, Assessment, and Planning Cycle.' You will explore how you use this daily, to effectively plan and support learning 'in the moment' to meet children's learning needs.

This webinar will be of particular benefit as settings continue to consider their approaches to enhancing responsive practice, and reducing workload, in-line with the implementation of the revised EYFS Framework.

Learning Outcomes: If you apply what you have learnt you will be able to:

- ensure timely and appropriate planning in response to 'in the moment' use of the EYFS 'Observation, Assessment, and Planning Cycle.

Cost: £54 per person





Child Development

We offer age-focused webinars which explore the underpinning knowledge of child development to ensure age appropriate responses and expectations.

Essential Child Development - Beginning with babies (0-2 years)

Delivered by Children at Heart

Aims: Gain an overview of key child development theory, illustrate the main characteristics of babies, and identify the key aspects of child development. You'll be able to provide appropriate experiences to support all areas of development.

Learning Outcomes: If you apply what you have learnt you will be able to:

- identify key child development theories and the main characteristics of their development, including typical milestones.
- provide experiences indoors and out.
- develop physical and emotional challenge and support all areas of development.

Cost: £27 per person

Essential Child Development - Talking about toddlers (2-3 years)

Delivered by Children at Heart

Aims: Gain an overview of key child development theory, illustrate the main characteristics of toddlers, and identify the key aspects of child development for 2 to 3 year olds and be able to provide appropriate experiences to support all areas of development.

Learning Outcomes: If you apply what you have learnt you will be able to:

- identify key child development theories and the main characteristics of their development, including typical milestones.
- provide experiences indoors and out.
- develop physical and emotional challenge and support all areas of development.

Cost: £27 per person

Essential Child Development - Playful pre-schooler (3-4 years)

Delivered by Children at Heart

Aims: Gain an overview of key child development theory, illustrate the main characteristics of pre-schoolers, and identify the key aspects of child development for 3 to 4 year olds and be able to provide appropriate experiences to support all areas of development.

Learning Outcomes: If you apply what you have learnt you will be able to:

- identify key child development theories and the main characteristics of their development, including typical milestones.
- provide experiences indoors and out.
- develop physical and emotional challenge and support all areas of development.

Cost: £27 per person





EYFS Assessment – Manageable and Meaningful

Delivered by Enable Children

Aims: You will gain insights into how an effective key person moves forward in the EYFS. You will be enabled to undertake manageable and appropriate assessment practices that are tailored to the needs of individual children.

This webinar champions enjoyable and effective everyday practice that is attuned to each child's learning and well-being needs whilst retaining the core EYFS focus on high quality interactions and reducing or eliminating burdensome assessment and tracking systems.

Learning Outcomes: If you apply what you have learnt you will be able to:

- employ effective and manageable approaches to observing and identifying children's interests, strengths and needs.
- make sufficient assessments and implement supportive strategies for meeting individual children's needs.
- strengthen partnerships with parents and colleagues and share what you have learnt in order to enhance practice in your setting.

Cost: £27 per person



Lifelong Readers – Loving, Reading, Loving Life!

Delivered by Enable Children Ltd

Aims: For practitioners working with 2 – 5 year olds. Promote reading development through playful and purposeful opportunities and interactions; both adult-led and child-initiated.

Explore techniques and skills, such as dialogic book sharing. Learn manageable and cost-effective ideas to refresh and enliven your approach to literacy.

Learning Outcomes: If you apply what you have learnt you will be able to:

- draw upon EYFS best practice and research findings to inform your literacy provision.
- plan and provide skilled interactions that support children's motivation, confidence, and progress in reading development.
- understand and implement innovative elements of literacy-rich opportunities and environments indoors and outside.
- recognise and affirm your vital role in supporting children's engagement and learning.

Cost: £54 per person



New Early Years Practitioner

Explore the roles and responsibility of being an Early Years Practitioner. This module includes having and using a good understanding of child development, safeguarding, health and safety, purposeful play, supporting children with a special educational needs and disabilities as well as working with others, both in your setting and external professionals.

No booking is needed, simply enrol on Learning and Development and complete the course.

Cost: £0 (Subsidised by West Sussex County Council)

Ofsted – Are you ready?

Delivered by Enable Children Ltd

Aims: For practitioners who work directly with children, but leaders and managers are welcome to attend.

This informative webinar will support you in understanding what an Ofsted inspection means and the implications of this with regard to your practice and provision. Consideration of key aspects from the 'Early years inspection handbook for Ofsted registered provision' (September 2019) will ensure opportunity for reflection and discussion of actions needed to be Ofsted 'ready'.

Learning Outcomes: If you apply what you have learnt you will be able to:

- understand what to expect from inspections.
- plan for any changes or possible training needs regarding your provision and practice.

Cost: £27 per person



Opening Up Children's Encounters with Books

Delivered by Enable Children Ltd

Aims: This course is suitable for anyone working in EYFS. It will enable you to provide children with exciting encounters with a wide range of books, that will support them on their journey towards being confident readers.

Learning Outcomes: If you apply what you have learnt you will be able to:

- revitalise access to books and printed materials throughout the learning environment, indoors and out.
- cultivate positive attitudes through engaging encounters with books in your setting.
- recognise their potential to reveal unconscious bias and challenge stereotypes.

Cost: £27 per person



On Your Marks, Get Set, Write!

Delivered by Enable Children Ltd

Aims: For practitioners working with 2 to 5 year olds. Inspire children to be enthusiastic and inventive mark makers, who develop their gross and fine motor skills through enriched learning environments in line with the EYFS, indoors and outdoors.

The content tracks the journey and development of mark making and earliest steps towards letter formation.

By engaging in new, hands-on activities with a range of innovative, economic resources, you will affirm and strengthen your professional knowledge. Current best practice examples and strategies will help you to secure effective implementation of playful and purposeful mark making activities alongside the skilled, playful adult support that children need.

Learning Outcomes: If you apply what you have learnt you will be able to:

- identify the typical stages of mark making and early writing.
- reflect on and evaluate current mark making practice and provision in your setting.
- plan ways forward to enhance children's learning and development with regard to mark making and early writing.

Cost: £27 per person



Active, Healthy and Learning - Understanding Physical Development

Delivered by Enable Children

'Physical activity is vital in children's all-round development, enabling them to pursue happy, healthy, and active lives'.

Aims: This engaging and participatory webinar will equip you to proactively promote and champion this vital prime area in your setting. It will enable you to ensure that all children are given the environment and opportunities they need physically to develop and thrive. Video footage, activities and engaging slides will provide the context to explore and reflect upon key research evidence, movement play, the development of gross and fine motor skills, the learning environment, resourcing, pedagogical approaches, and links to health.

Learning Outcomes: If you apply what you have learnt you will be able to:

- recognise the significance of physical play in supporting all the areas of learning and development and the impact you can have.
- be equipped and motivated to enhance the learning environment and provide opportunities to positively contribute to children's health, physical exploration, and learning.

Cost: £27 per person

Playful Percussion

Delivered by Enable Children

'The enormous wealth of sounds from percussion instruments astonishes and fascinates nearly everyone'.

The Joy of Drumming, Tom Klower



Aims: Children begin feeling and sensing rhythmic patterns at a very early age. This enjoyable, participatory course offers you a valuable opportunity to explore how children can use their bodies and a range of percussion instruments in a wide variety of ways, to encourage movement and awareness of rhythm and beat. This type of learning naturally resonates with many EYFS areas of learning and development, including communication skills, mathematics, creativity, and cultural awareness.

Seeing, hearing, and trying a variety of simple but impactful skills, approaches and activities will equip you to plan and implement percussion sessions, supporting learning and development in all areas. Come prepared to join in and have fun!

Instruments will be provided for use during the course.

Learning Outcomes: If you apply what you have learnt you will be able to:

- plan and deliver enjoyable and impactful percussion activities in your setting that effectively support a broad range of children's learning and development.

Cost: £27 per person



Prioritising children's wellbeing

Delivered by Linden Learning

Aims: The aim is to support you to understand the importance high levels of wellbeing in the early years and how to foster this. This course is linked with the EYFS Personal, Social and Emotional Development (PSED) aims.

Learning Outcomes: If you apply what you have learnt you will be able to:

- consider which factors can influence emotional development and wellbeing.
- employ different strategies which will have a positive impact on wellbeing.
- look at well-being and involvement and judging children's levels using the Leuven scales.

Cost: £27 per person





Ready, willing, and able. Supporting the development of the Characteristics of Effective Learning

Delivered by Children at Heart

Aims: You will consider ways in which practitioners can support young children to become confident, capable thinkers and learners for life, through fostering the development of the Characteristics of Effective Learning.

You will discuss how to provide positive relationships and enabling environments that offer opportunities for children to be independent, make choices and develop their skills in expressing their own thoughts and views.

Learning Outcomes: If you apply what you have learnt you will be able to:

- explain the importance of learning dispositions that support the development of children's thinking skills and independence.
- identify and implement strategies to support children's development as confident, capable thinkers and learners.
- provide opportunities and resources that encourage independence and develop children's self-confidence in making decisions and expressing their thoughts and opinions.

Cost: £27 per person



Refreshing My Work - Do I understand EYFS Pedagogy and the Characteristics?

Delivered by Enable Children

Aims: What do we mean by "pedagogy"? Do we fully understand the Characteristics? What are the EYFS documents telling us about HOW children learn and HOW we can best support their progress and well-being?

This course will enhance your understanding of how you can support and enrich learning by broadening knowledge of Pedagogy and the Characteristics as outlined in the revised EYFS (2021). It will refresh and enhance your professional confidence and skills by promoting a revitalised approach to day-to-day practice.

Learning Outcomes: If you apply what you have learnt you will improve children's outcomes through:

- applying your familiarity with EYFS pedagogy and your understanding of proven high quality and inclusive approaches to promote children's learning.
- being equipped to ensure that the Characteristics are understood, valued, and woven into provision and practice.
- being motivated and ready to work with colleagues in evaluating current practice and provision and identify existing strengths and ways forward.

Cost: £27 per person





Roll out the role play

Delivered by Enable Children

Aims: This webinar is for those working with children aged 3+. It contains innovative and exciting insights, suggestions and case studies which highlight best practice regarding role play, both indoors and out.

Training elements combine to deliver a strong thread of commitment to respecting and nurturing children's imaginative play and recognising its enormous potential as a powerful vehicle for learning. Reflective approaches are threaded through the session. Enable Children's role play audit enables delegates to identify their strengths, priorities, and practical ways forward.

The course includes low-cost resources that promote math's, literacy, and other areas of learning through meaningful and stimulating role play.

Learning Outcomes: If you apply what you have learnt you will be able to:

- embed role play as a powerful vehicle for children's learning and well-being.
- provide a rich variety of well organised resources and spaces, for both planned and spontaneous role play, indoors and out.
- value and celebrating diversity and self-esteem through role play.
- provide challenges and opportunities that are matched to children's needs and fascinations.

Cost: £27 per person



Roots to Resilience - making your outdoor provision outstanding

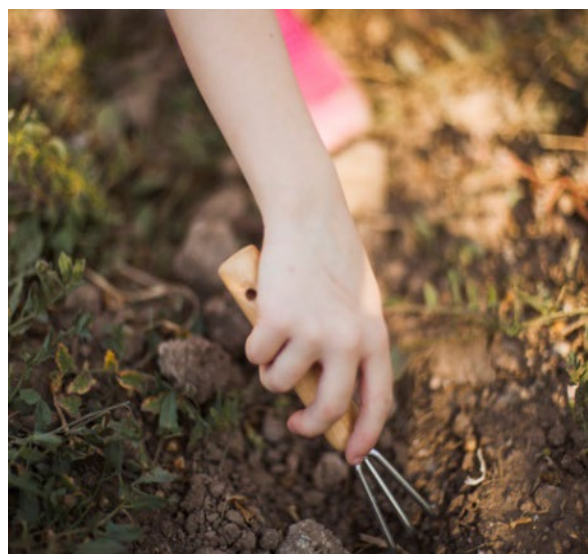
Delivered by Linden Learning

Aims: In this interactive webinar you will learn about providing quality outdoor play and how it supports personal, social, and emotional development in young children. You will learn and share ideas for excellence in outdoor play and learning. This course is linked with the EYFS Personal, Social and Emotional Development (PSED) aims and outdoor play.

Learning Outcomes: If you apply what you have learnt you will be able to:

- identify steps in raising the quality of the outdoor provision.
- understand more about resilience and connection with nature.
- gain ideas for developing your outdoor environment and the way you work with it.
- move beyond British Values to values for the earth and develop a holistic approach to exploring resilience and wellbeing outdoors.

Cost: £27 per person





Sound and Secure - Essential early phonics for 3 and 4 year olds

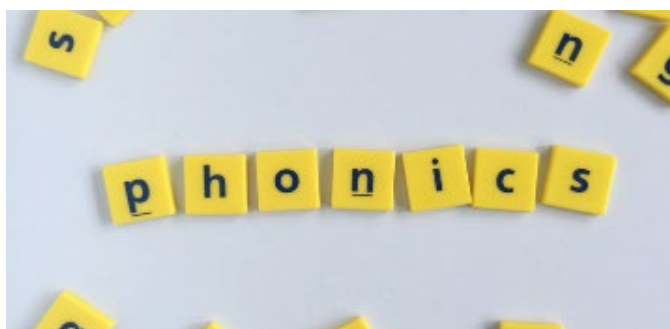
Delivered by Enable Children

Aims: For practitioners working with 3 and 4 year olds in the pre-school sector. This interactive and enjoyable course is designed to support you in ensuring that playful approaches to phonics are woven naturally throughout everyday practice and to maximise the phonological progress. Content will include interesting, low-cost games, rhymes and songs with minimum preparation and maximum impact.

Learning Outcomes: If you apply what you have learnt you will be able to:

- confidently plan and deliver a wide range of age-appropriate play-based activities, rhymes, games, and songs which target specific aspects of phonological development.
- provide stimulating enabling environments (inside and out) which successfully support children's progress in early phonics and identify the most/least appropriate alphabet resources for your setting.
- promote children's ability to distinguish between different every day, environmental sounds and correctly isolate and pronounce letter sounds in readiness for the phonics in the reception class.

Cost: £54 per person



Story Stuff – Impromptu Story Making

Delivered by Enable Children

'It has been said that next to hunger and thirst, our most basic human need is for storytelling.' Khalil Gibran, poet

Aims: For practitioners working with 3 to 5 year olds in the pre-school sector. This practical and innovative course explores approaches to connecting with a rich vein of imagination and story creation by using children's fascinations and experiences. Everyday items and simple props will be considered as triggers to enhance play, interactions, and expressive language.

You will gain an awareness of simple adult behaviours and responses that can foster story awareness in children, such as, play commentary, recounting recent experiences and scribing for children to record their ideas and create homemade books for the setting.

Learning Outcomes: If you apply what you have learnt you will be able to:

- promote imaginative learning and the creation of story narrative in children's daily activities.
- identify specific adult behaviours and everyday interaction skills which extend children's awareness of simple story language and structures.
- plan and embed appropriate learning opportunities, which support literacy development related to story-telling and story making, both indoors and outside.

Cost: £27 per person





Understanding and Responding to Children's Behaviour

Delivered by Children at Heart

Aims: In this course you will evaluate traditional approaches to behaviour management considering current research in child development and neuroscience. You will explore the effectiveness and appropriate use of a variety of behaviour management strategies.

This is a revised, updated, and extended version of 'Step away from the star chart: strategies for responding to children's behaviour.'

Learning Outcomes: If you apply what you have learnt you will be able to:

- discuss some theories that underpin approaches to managing and responding to children's behaviour, and the differences between intrinsic and extrinsic motivation.
- understand that children's behaviour is impacted by their stage of development, ability to self-regulate and communicate their needs.
- apply a range of strategies to support children who are expressing unwanted behaviour.

Cost: £54 per person

Nurturing Self-Regulation

Delivered by Linden Learning

Aims: This course enables practitioners to understand the development of self-regulation in young children.

Learning Outcomes: If you apply what you have learnt you will be able to:

- Explore self-regulation and consider how it affects our lives.

- Consider self-regulation in terms of cognitive and emotional development.
- Gather ideas of how to support children to become better at regulating their emotions and explore calming strategies.

Cost: £27 per person





Leadership and Management

These courses are suited to managers, deputies, room leaders and those wanting to move into these roles.

Effective Leadership - New Manager Support

eLearning

This eLearning is for Early Years practitioners aspiring to be leaders or who are in leadership positions. It provides an overview of the role and the support available in West Sussex.

No booking is needed, simply enrol on Learning and Development, and complete the course.

Cost: £0 (Subsidised by West Sussex County Council)

Financial Planning for Early Years and Childcare Providers

eLearning

Discover why financial forecasting and planning plays a pivotal role in managing a successful and sustainable childcare business.

No booking is needed, simply enrol on Learning and Development, and complete the course.

Cost: £0 (Subsidised by West Sussex County Council)

Leaders Course: The Bigger Picture – Assessment Considerations

Delivered by Enable Children

Aims: Suitable for early years setting managers and Reception teachers. However, the Reception baseline assessment and the EYFS Profile are not considered in depth.

The aim is to support you as a leader and manager to ensure the principles of sound assessment and monitoring of children's progress are effectively communicated to staff teams and embedded in setting assessment systems.

Reflect on current assessment systems and effective monitoring of children's progress to spot trends and patterns in development and learning; identify what is working well and identify needs of particular groups and strategies to support their learning and make improvements in your setting.

Learning Outcomes: If you apply what you have learnt you will be able to:

- adopt an informed and positive approach to your leadership responsibilities.
- ensure that you have a firm awareness of progress across your whole setting.
- identify where assessment and monitoring of children's progress is working well and where enhancements are needed.

Cost: £27 per person





Leaders Course: Understanding Positive, Proactive and Effective Leadership

Delivered by Enable Children

Aims: Consider the attributes, skills and competences that enable leaders to be positive, proactive, and effective. Informative and thought-provoking content explores what makes a good leader and what your setting needs from your leadership. Consider these points through the perspective of your leadership position(s): strategic leadership, operational leadership, and team leadership.

Learning Outcomes: If you apply what you have learnt you will be able to:

- reflect on and evaluate the effectiveness of your leadership.
- identify what is needed in your leadership position to be positive, pro-active, and effective.

Cost: £17 per person

Leadership and Management - Following the Leader

Delivered by Linden Learning

Aims: This course will assist you to develop leadership and management skills such as the effective use of coaching techniques, methods to foster a growth mindset and the use of self-evaluation to improve practice. Application of these skills will ensure you have a positive impact in your setting.

Learning Outcomes: If you apply what you have learnt you will be able to:

- foster a growth mindset in your team.
- use a coaching approach to ensure effective supervisions.

- employ skills such as listening, questioning, and giving feedback effectively.
- use of self-evaluation and review to improve practice.

Cost: £27 per person

Marketing for Early Years and Childcare Providers

eLearning

Why should parents and carers choose you when looking for childcare? Discover why marketing is a crucial activity for successful childcare businesses.

No booking is needed, simply enrol on Learning and Development, and complete the course.

Cost: £0 (Subsidised by West Sussex County Council)





Mental Health Awareness

Delivered by West Sussex County Council

Aims: This is an official Mental Health First Aid England (MHFA) course which will support you to recognise and respond appropriately to signs of emotional and mental ill health in staff and other adults.

You will receive a high quality manual to support your learning and your mental health role and an online 'badge' to attach to your email signature. You will also receive an official MHFA England certificate.

Learning Outcomes: If you apply what you have learnt you will be able to:

- define mental health and emotional wellbeing.
- relate to people's experiences.
- recognise signs of mental health distress.
- start a supportive conversation about mental health.
- practice self-care

Cost: £TBC per person

New Early Years Room Leader

Develop your knowledge, skills, and confidence in your new role as a Room Leader.

The module includes an introduction to both theory and practice in the following areas: The role of the Room Leader. The skills you need and the benefits of being a Room Leader. Worries or concerns that you may have about being a Room Leader. Top tips for being a Room Leader.

No booking is needed, simply enrol on Learning and Development and complete the course.

Cost: £0 (Subsidised by West Sussex County Council)

Staff Supervision for the Early Years (as required by the EYFS)

Delivered by Linden Learning

Aims: The aim of this course is to understand the benefits of regular supervision as part of staff professional development and, by extension, the enhancement of the quality of learning experiences and staff confidence. You will also gain skills and confidence which support successful supervisions.

Learning Outcomes: If you apply what you have learnt you will be able to:

- discuss the role of supervision for the early years workforce.
- use a coaching approach within supervision.
- develop essential skills for supervision.

Cost: £27 per person

Prevent Awareness (Level 1)

Aims: This central government course introduces the Prevent duty and the forms of extremism and terrorism threatening the UK. It will develop your knowledge around the risks of radicalisation and your role.

Learning Objectives: If you apply what you have learnt you will be able to:

- explain what Prevent is and its importance.
- describe how Prevent applies to your role.
- identify the emotions and behaviours that might make someone vulnerable to radicalisation.
- understand how to apply the notice, check, share procedure.

Cost: £0 (Subsidised by Central Government)



West Sussex Early Years and Childcare Support Events

West Sussex County Council offers a variety of fully funded network events. These events are available to any setting; nursery, preschool, school, or childminder, working within West Sussex. Networks are hosted termly, unless otherwise stated and facilitated by Early Years and Childcare Advisors. The next available dates are [here](#).

Childminder Network

Aims: This network is for childminders to discuss practice and share ideas. You will receive up to date information from national and local developments that may affect your practice.

Learning Outcomes: If you apply what you have learnt you will be able to:

- understand national and local developments and how these impact practice.

Cost: £0 (Subsidised by West Sussex County Council)

EYFS Leaders Network

Aims: This network is for those who manage and lead practice in early years settings. It is an invaluable opportunity to network with other local providers and hear about elements of the EYFS, including business and welfare, as well updates to guidance and new ideas to support the provision of high quality education.

Learning Outcomes: If you apply what you have learnt you will be able to:

- Recognise national and local latest local and national EYFS news and understand the impact on practice.

- Recognise and explore themes which support the review and development the quality of provision.

Cost: £0 (Subsidised by West Sussex County Council)

INCO SENCO Network

Aims: This network is for Inclusion/Special Educational Needs and Disabilities Coordinators (INCOs/SENDCOs) to gain updates, information, and guidance.

Learning Outcomes: If you apply what you have learnt you will:

- have an awareness of national and local developments and understand how these will impact on practice.
- understand themes which support you to review and develop the quality and inclusivity of your provision.
- share ideas and support others in the same role.

Cost: £0 (Subsidised by West Sussex County Council)





Transition Event

Aims: This event is for schools and early years providers to share initial transition information for children starting school.

Effective transitions are important for children's emotional well-being and achievement, and planning for these transitions is fundamental to effective early years practice.

To ensure continuity of experience for children, transition should be seen as a process rather than a one-off event. Discussions involving the child, parents and others throughout the planning process will support successful transitions.

The information gathered allows you to begin planning other support needed, including setting, school or home visits, and supported transitions.

Learning Outcomes: If you attend an event, you will be able to:

- meet with multiple schools and early years settings in one place.
- share and gather key transition information in a consistent format and

identify children in need of further transition support. share and gather the information needed to inform transition plans based on the needs of the children.

- share and receive vital safeguarding information, and plan and prioritise other transition support activities such as setting and home visits.
- provide a smoother and more positive transition into school for children and their families.

Cost: £0 (Subsidised by West Sussex County Council)





Business Support

The headings below link to the relevant sections in our Business Support pages.

[Providing free childcare for 2, 3 and 4 year olds](#)

[Business planning and marketing](#)

[Staff recruitment](#)

[Financial planning](#)

[Free advertising for your childcare business](#)

[Request targeted support](#)

eLearning

These courses have been developed by West Sussex County Council to support your business. To find other subsidised eLearning courses within this brochure click 'Ctrl' and 'F' at the same time and then in 'elearning' into the search box.

Closing Your Setting

This course provides information on what to do when closing your setting, either on a temporary or a permanent basis.

No booking is needed, simply enrol on Learning and Development and complete the course.

Cost: £0 (Subsidised by West Sussex County Council)



Find out more about our Training Providers

Children at Heart

With over 20 years' experience in the Early Years sector Rebecca Martland is a qualified teacher and Early Years Professional. She is a 4-times Ofsted 'Outstanding' Registered Childminder; Early Years trainer, consultant, and author; including frequent articles for Practical Preschool, Early Years Educator and Kinderly. Her achievements include a 'Highly Commended' at the 2017 Nursery World Awards for co-organising the innovative Minding the Gap Early Years conference. She was subsequently invited to become a judge for the Awards. Rebecca is a staunch advocate of play based, child-centred education and childcare, with a keen interest in supporting and enthusing others to share her philosophy. This concept is at the centre of her training and a message she shares widely as an active member of the Early Years community.



Enable Children

Yvonne Au and Gail DuBock are highly regarded independent professionals providing successful early years training and consultancy services.



They have both demonstrated passion and dedication to working in early years education for over 35 years, spanning a wide range of roles including as teachers in schools and preschools; as respected and knowledgeable trainers and consultants in local authorities and at national level as advisors for the Department for Education.

They are renowned for their expertise and impact. Their commitment to delivering high quality services with "integrity, inspiration and impact" flavours all their work.

Hempsalls

Hempsall's was established in 1999 to form a collection of trainers, consultants, and researchers. We are here to support everyone to achieve best practice in services for children and families.



In-Trac Training and Consultancy Ltd

Established in 1994 by Jane Wonnacott, In-Trac specialises in delivering training and consultancy services of the very highest quality. This is achieved through the In-Trac network of dedicated and highly experienced training Associates, who come from a wide range of professions including social workers, health visitors, police officers, academics, and teachers.



We can respond to a wide range of requests for training and consultancy and can provide named staff for specific assignments and extensive projects. In-Trac's Associates are totally committed to delivering first rate, motivational training on a wide range of subjects in the fields of health, education, and social care, from the development of complete training strategies – to the



delivery of a single training day. Our courses are highly creative and interactive, using a range of tools to provide participants with an inspiring, memorable, and enjoyable experience, whilst focusing on applying that learning to practice.

Linden Learning

Linden Learning's early years team has built up a reputation in the sector for a deep knowledge of how young children learn and develop. Many of their associates are published authors and have written regularly for popular early childhood magazines. They also work regularly in settings and have a real appreciation of current issues facing staff working in settings across the country. Linden Learning understand that time for professional development is precious and will work with you to make sure that all their training is engaging, purposeful and enjoyable.



Pulse First Aid Ltd

Training is a way to enrich your life with new information that in the case of First Aid, could even help you save a life. Not long ago we took a call in the office which had us all in tears when we were informed about a young life that had been saved by a wonderful brave lady a couple of days after she had attended one of our First Aid courses.



Training is an opportunity to learn and should be enjoyed. We are passionate about this and cut all the nonsense out so you can have a great course and walk away feeling happy, enthusiastic, and ready to use what you have learnt.

STEP Consultancy

Sheila Inwards is a tutor, assessor, mother, grandmother, and carer with over 30 years of experience in the childcare sector. She is passionate about learning, inclusivity, and encouraging growth. In Sheila's own words:



"I am a qualified Makaton trainer, registered with the Makaton Charity. My eldest son was born with Prader Willi Syndrome and when we discovered Makaton, we could finally communicate. My dad had dementia and I used Makaton with him so we could still communicate when he could no longer talk. I hope to share these joyful, positive experiences that Makaton has brought me, with everyone. My goal is to ensure inclusivity for all through encouraging Makaton learning nationwide."

"From these personal and professional experiences, I've developed an in-depth understanding of individual needs. I try to plan my courses around the specific requirements of each person or group, and to offer the services you need to thrive."



West Sussex Speech and Language Specialist Team (SaLSS)

Deirdre Nash, Catherine Brierley, Phoebe Edwards, Jo Sainsbury, and Amy Watson are highly specialist Speech and Language Therapists who work as part of the Speech and Language Support to Settings (SaLSS) team.



The SaLSS team provide training and support around a range of speech, language and communication needs to Early Years providers across West Sussex. The offer includes universal training events accessed via the Learning and Development Service and setting based training for whole staff teams; tailored to meet the needs of the children and setting involved. The SaLSS team provides information and support both at a universal level to develop the communication skills of all children and at a targeted level for those children identified with speech, language, and communication needs. They have also developed a range of resources including a Practical Communication Activities book and posters to display in the setting.



Terms and Conditions

We are committed to delivering the highest standards of Continuing Professional Development to improve outcomes for our customers. We aim to provide a positive learning experience and to facilitate this, there is an expectation of mutual accountability during training between delegates, trainers, and their managers. We continually review our service and welcome any suggestions for improvement.

Payment

We are hoping to be able to take payment by card through the Learning and Development Service for face to face courses and webinars from January 2024. At the time of writing, the ability to take payment when booking had not been finalized. Until further notice, payment will be requested after the course, details to follow.

For the non-subsidized eLearning, self-led courses listed in our [Online course brochure](#), please pay via WSCC payments portal at www.westsussex.gov.uk/IP. If you cannot pay by card, please contact the Early Years Training team by email: early.years.training@westsussex.gov.uk

Any applicable fees and charges will be governed by West Sussex County Council's debt recovery process.

Bookings

Bookings are made on a first come, first served basis. A place is not secured until payment has been made. Please ensure to book and pay before attending, as the trainer will refuse access if the booking has not been completed.

It is essential that you keep your Learning and Development Service account details up to date, such as updating your email address or employer. West Sussex County Council cannot accept responsibility for information that is sent but fails to arrive. Line managers should also inform the Learning and Development Service when staff members leave. It is assumed that line managers have the authority to act on behalf of their employee in authorising bookings and complying with these terms and conditions.

Cancellations and Substitutions*

Confirmed places that are cancelled 5 working days (Monday to Friday) or less before the course takes place will be charged at the standard rate. The same charge will also be made for non-attendance on the day, or very late arrival. The charge is levied to recoup a proportion of the overheads incurred. The rates and notice period indicated are subject to continual review.

Should the original delegate be unable to attend, settings are welcome to send a substitute. Please update the delegate name prior to the start of the course, either by logging on to the [Learning and Development Service](#) or by emailing [Learning and Development](#).

Please bear in mind that the cancellation policy still applies if the substituted delegate subsequently cancels within 5 working days or fails to attend.



If a delegate is unable to attend part of a multi-part course, please inform the Early Years Training team by email: early.years.training@westsussex.gov.uk. We will endeavor to book the delegate onto the second part of a future course. If this is not possible, the delegate will be recorded as 'did not attend' and advised to re-book and attend all parts of the next available course. In this instance, additional payment may be required.

If we need to cancel the course due to factors outside of our control, we will refund delegates booked on to that course.

***Please note - Paediatric First Aid**

Once a delegate completes the online part of the course, then course payment cannot be refunded even if the delegate cancels within 5 working days of the face to face course. If you are unable to attend the face to face course, you may be able to transfer to alternative date if space is available.

Un-booked Attendance

It is essential that you book a place to ensure that there are sufficient course materials, furniture and that we do not exceed the venue's health and safety limitations. If a delegate attends without booking, the trainer will refuse access to the course.

Attending the Event

You will be expected to make any arrangements necessary to attend the whole course as indicated in the course description or you may be asked to re-book on another date.

Delegates are responsible for downloading any attachments and, if applicable, bringing resources to the course. Delegates must complete any pre-course tasks prior to attending.

Events will start promptly at the advertised time. Delegates are advised to arrive at least 15 minutes before the start time. It is at the trainer's discretion to accept late entry up to 10 minutes after the start time; after this point the delegate may be asked to rebook. If the delegate is unavoidably delayed, please contact the Early Years Training team by email: early.years.training@westsussex.gov.uk

Ground rules will be established for all delegates at the start of the day, including issues of confidentiality and whistle blowing.

The objectives of the course will be clearly stated and met through a variety of training activities to suit a range of learning styles. We will provide appropriate materials to support the learning.

We will provide an opportunity to evaluate the learning via a course evaluation. This will be emailed after the event and accessed via the Learning and Development Service. Once the evaluation has been completed, delegates will be able to download their attendance certificate.

If delegates have concerns about anything they experience during the course, they should discuss this with the trainer. If this is not appropriate or is unresolved, then they should talk to their line manager who will contact the Early Years Training team by email: early.years.training@westsussex.gov.uk



We welcome feedback as part of monitoring.

Attendance Register and Certificates

It is the delegate's responsibility to sign the attendance register provided by the trainer, complete any pre-courses tasks, attend the whole course, and evaluate it online in order to obtain their certificate.

Disclaimer

All details of courses and costs contained in this brochure are correct to the best of our knowledge at the time of publication. West Sussex County Council cannot be held responsible for any errors contained therein, and we reserve the right to cancel or modify any of the courses in this brochure.