

West Sussex Pharmaceutical Needs Assessment (PNA)

Supplementary Statement Quarter 2 2023/24

This supplementary statement to the West Sussex Pharmaceutical Needs Assessment is issued in accordance with the NHS (Pharmaceutical Services) Regulations 2013 and subsequent amendments.

Date Pharmaceutical Needs Assessment Published:	September 2022	Pharmaceutical Needs Assessment Review Date:	September 2026
Date Supplementary Statement Published:	September 2023	Supplementary Statement No:	2023/24 Qtr 2

Consolidation of pharmacies

Following an application to NHSE, the consolidation of the pharmacies at Lloyds Pharmacy, 4 Langley Parade, Crawley, RH11 7RS (Remaining Site) and Lloyds Pharmacy in Sainsburys, Crawley Avenue, West Green, Crawley, RH10 8NF (Closing Site) was granted and took effect from 2 June 2023. The West Sussex Health and Wellbeing Board is of the opinion that the consolidation of these pharmacies does not create a gap in service provision, however, will continue to monitor pharmaceutical service provision across the county.

The details of the two affected pharmacies are as follows:

Details	Remaining site	Closing site
Name of contractor and trading name	Lloyds Pharmacy	Lloyds Pharmacy in Sainsburys,
Address	4 Langley Parade, Crawley, RH11 7RS	Crawley Avenue, West Green, Crawley, RH10 8NF
Total opening hours - Monday to Friday	8.30am to 6.30pm	7.00am to 11.00pm
Total opening hours - Saturday	9.00am to 5.00pm	7.00am to 10.00pm
Total opening hours - Sunday	Closed	Closed

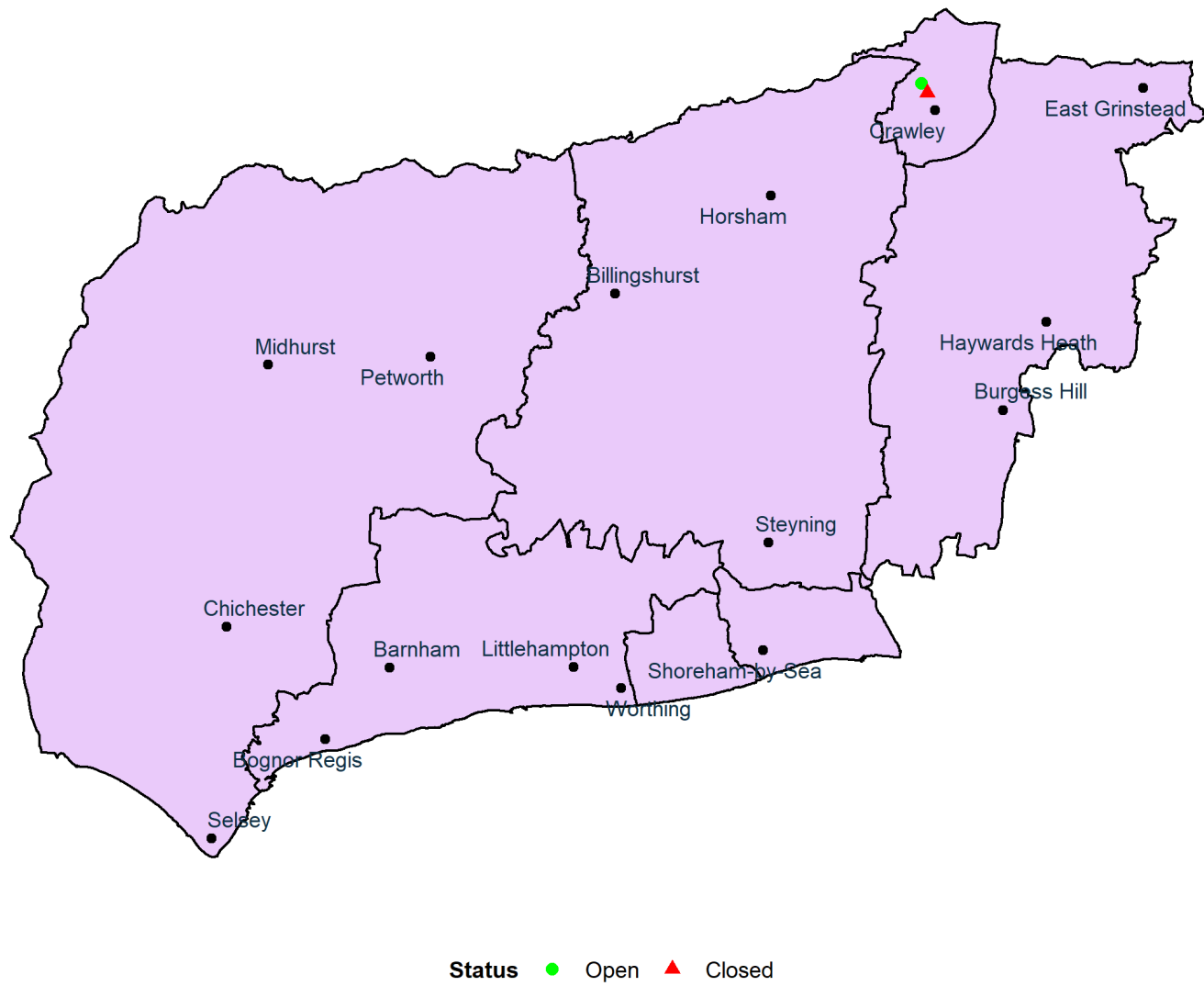


Figure 1: Map of West Sussex showing locations of consolidated Lloyds pharmacies in Crawley, August 2023.

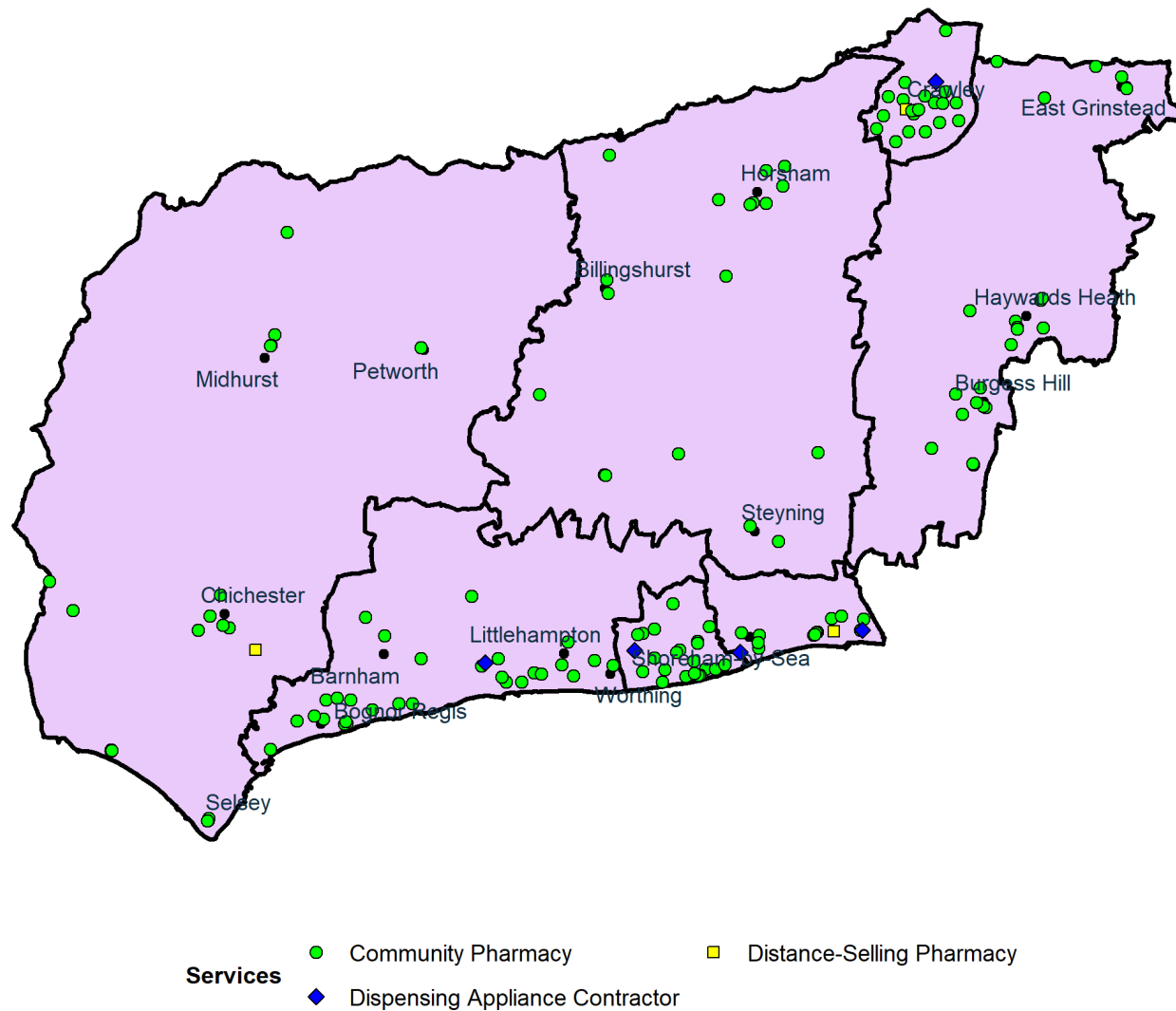


Figure 2: Map showing pharmacies in West Sussex, August 2023.