

# How to use the WSCC iMap (Public Rights of Way)

**Table of Contents** (Press control and click to move to the listed section below)

1) What information does the iMap show .....	1
2) Opening the iMap.....	1
3) Moving around the map.....	2
4) Turning layers on and off.....	3
5) Finding information about a feature .....	3
6) Find the Grid Reference.....	3
7) Google Street View.....	3

## 1) What information shows on the iMap

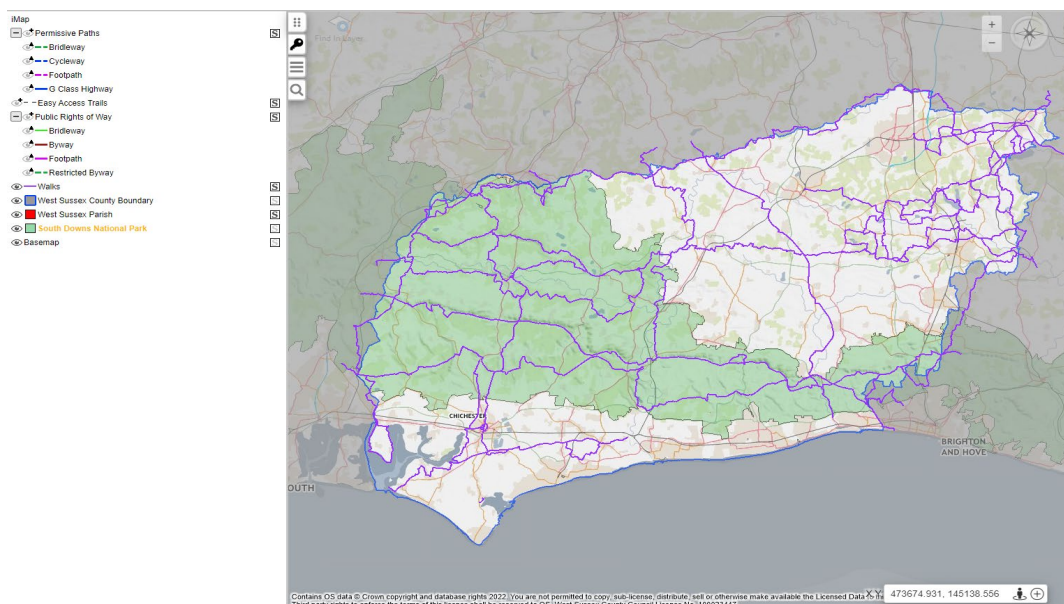
The iMap shows:

- Public Rights of Way (Public Footpaths, Public Bridleways, Restricted Byways and Byways Open to All Traffic)
- Permissive paths where WSCC has an agreement with the landowner
- Long Distance Paths and Easy Access Trails
- West Sussex County boundary
- Parish Council boundaries
- South Downs National Park boundary
- Base mapping (Ordnance Survey)

The Public Rights of Way, Permissive Paths and Parish boundaries show when you zoom in. Path numbers will show when you are zoomed in further. These numbers may appear jumbled, but if continue to zoom in they will show so they are easy to read.

## 2) Opening the iMap

The iMap opens to show a map, which should look similar to below, with the whole county showing on the map and key to the layers open.



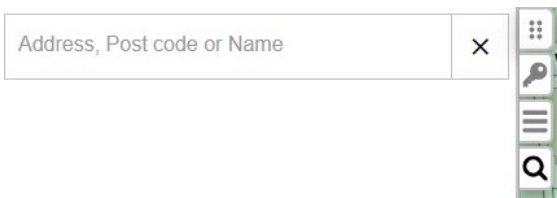
### 3) Moving around the map

**Zooming in and out** - You can zoom in and out using the scroll wheel on your mouse or using the + and - buttons at the top right of the map.

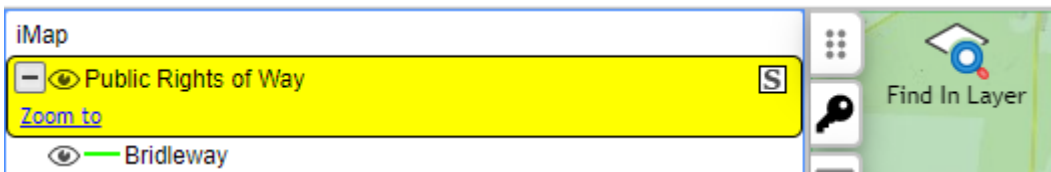
**Panning** - You can pan around the map by right clicking on the map and dragging the map across the screen or by clicking on the points of the compass in the top right corner.



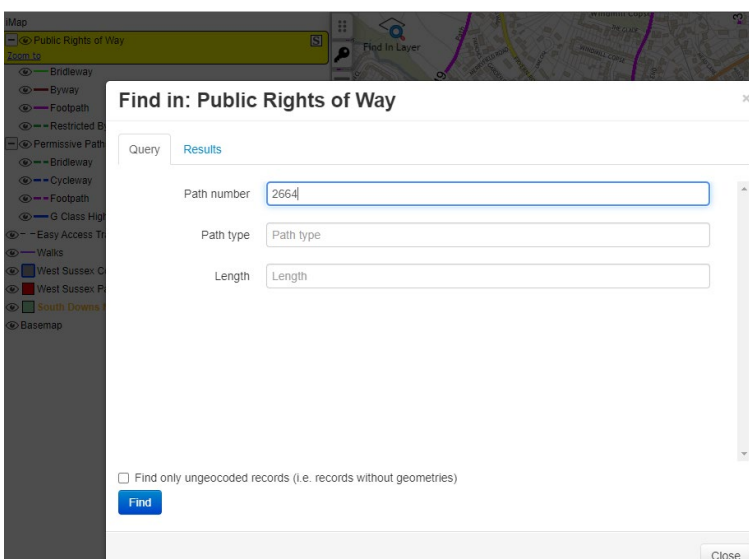
**Address Search** - You can also use the address search by clicking on the magnifying glass icon at the top left of the map and typing the address, post code or place name in the box. Then click on the option you want from the results list to go to the location on the map.



**Search in a layer** - To find a particular feature in a specific layer click on the layer name in the key so it is highlighted yellow. Click on the Find in layer icon (top left in map).



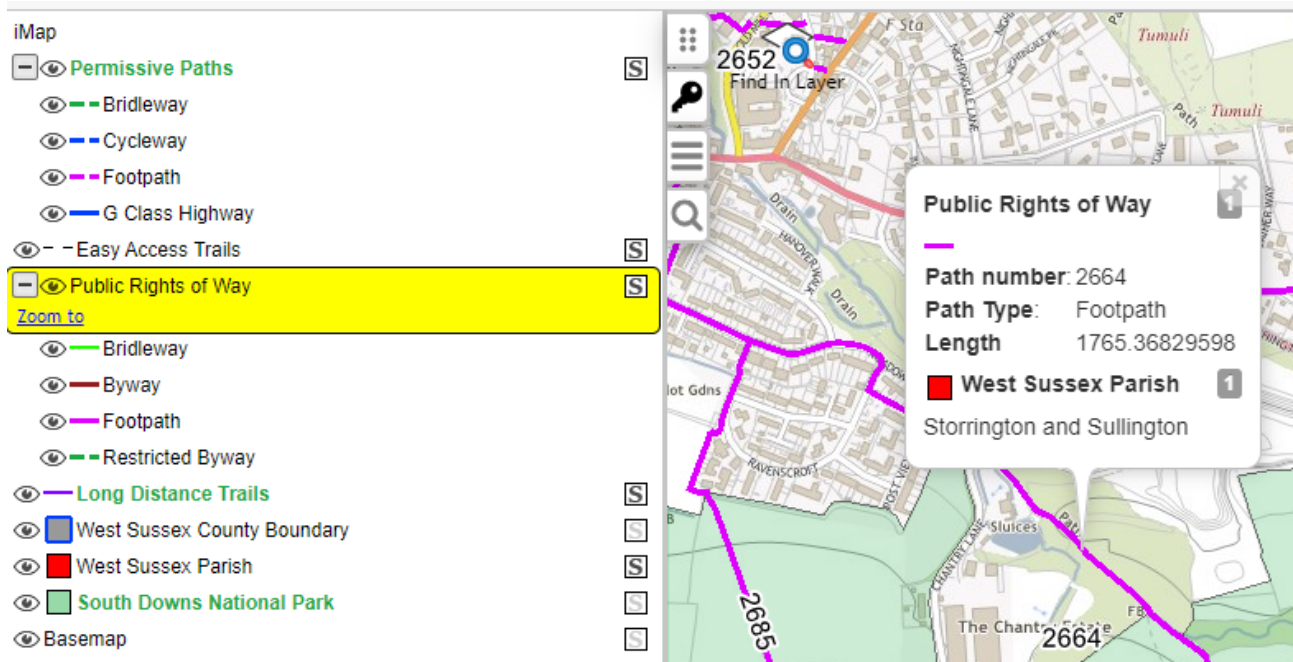
A box will appear. Type the details of what you want to search for in the feature you want to find (in the example we are finding path 2664). Then click on the blue Find button.



All possible options will show in the results box. Select the one you want (it will go blue) and then click the blue 'Drill Down Through Layers' button. This will take you to the correct location on the map.

#### 4) Finding information about a feature

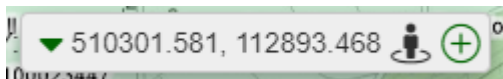
To find information about a path or place you can click on it and a box will appear showing information from selectable layers (these are ones that have a black **S** to the right of the layer name; they are not selectable if the S is grey). You can make layers selectable or not by clicking on the **S**. If the information doesn't appear and there is a small **i** on the map, click the **+** on the bottom bar and try again.



#### 5) Find the Grid Reference

The Grid Reference for the location of the arrow pointer displays in the bottom right corner of the map.

To capture a BNG ref (grid reference) from the map click on the **+** button at the bottom of the map. Then click on the map location you want the coordinates for. The coordinates are locked and it is possible to copy this from the grid reference box to paste elsewhere by clicking on the down arrow to the left of the grid reference, then selecting 'copy coords'. Re-click on the **+** button to get out of this mode.



#### 6) Turning layers on and off

Sometimes you may not want all layers to show. In the key (click on the key icon from the top left of the map if not showing), you can turn layers on and off by clicking on the eye symbol next to the layer name – for grouped layers you can turn on/off all layers in the group by clicking on the eye in the top row (i.e. next to Public Rights of Way or Permissive Paths), or you can turn each layer on/off individually. When a layer is turned off the eye shows as a pointy oval (or a greyed-out eye for layers in a

group). If the eye shows with a small black triangle you need to zoom in further for the layer to show.

### 7) Google Street View

You can also switch to Google Street View. Click on the man symbol, next to the grid reference, and then on the map where you want to go to Street View (Note; this has to be along a road). Street View will open in a new tab.

