

# West Sussex County Council Executive Leadership Team

January 2022



# Executive Leadership Team

Chief Executive's  
Service

Children, Young  
People and  
Learning

Place Services

Adults and Health

Fire and  
Rescue

HR and  
OD

Assistant  
Chief  
Executive

Children  
and Young  
People

Education  
and  
Learning

Property  
and Assets

Highways,  
Transport  
and  
Planning

Adult  
Social  
Care

Public  
Health

Fire and Rescue  
Service

Law and  
Assurance

Finance  
and  
Support  
Services

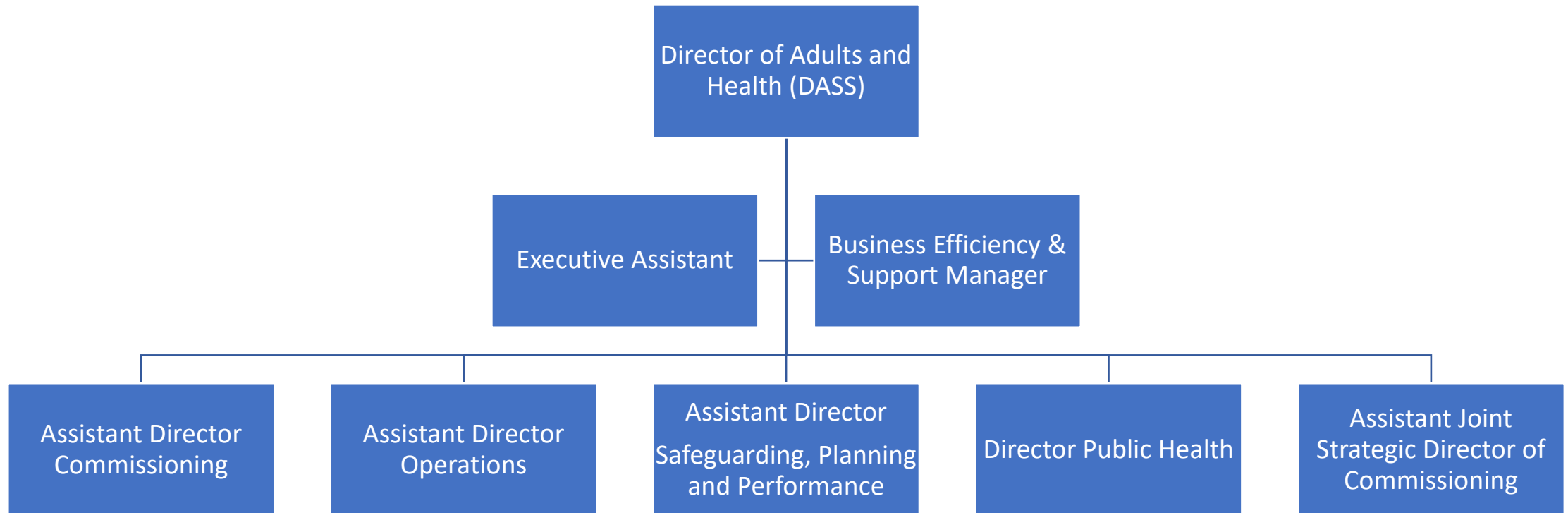
Digital  
Infra-  
Structure

Environment  
and Public  
Protection

Economy

Communities

# Adults and Health Leadership Team



\* With effect from 1<sup>st</sup> April 2022