



## West Sussex COVID-19 Data Summary

This pack brings together information relating to COVID-19 in West Sussex.

West Sussex County Council Public Health Department monitors information on a daily basis and produce this summary pack as well as showing more detailed analysis on the following website: <https://wsx-c19-weekly-supplement.netlify.app>. Links are provided to the public data sources available and a summary of current sources is provided at the end of this pack.

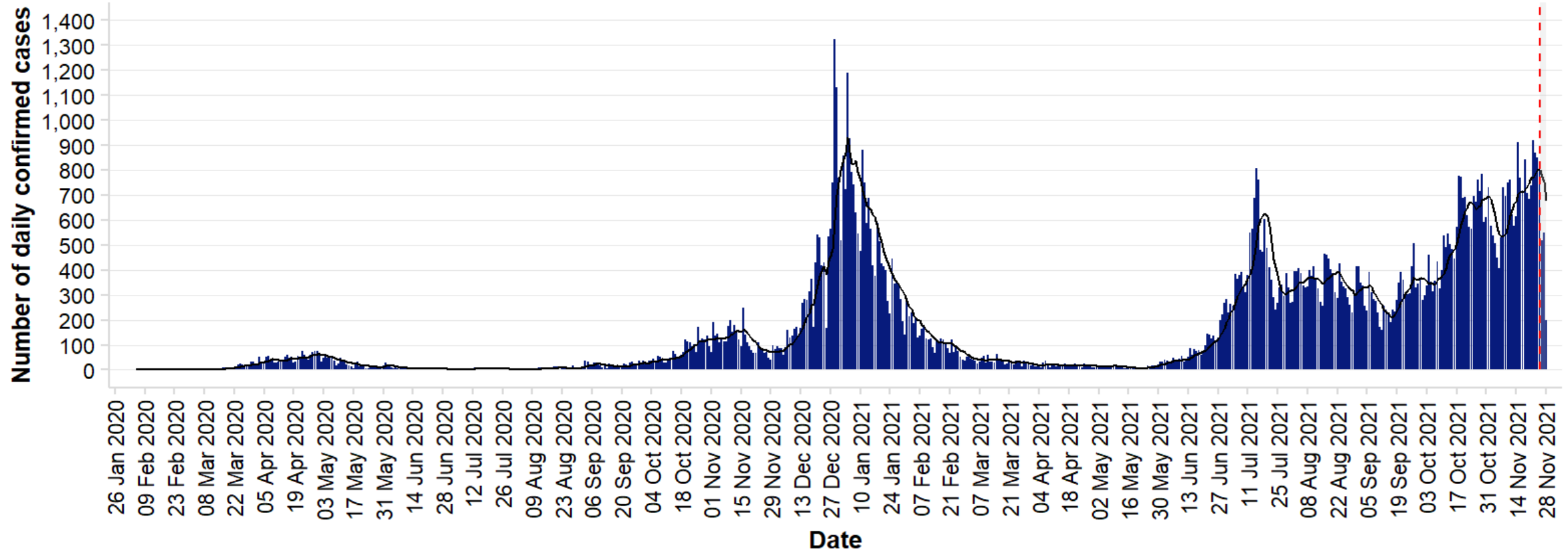
Local authorities have access to some information that is not in the public domain, this may be due to small numbers or data being provisional.

### Contact

publichealth@westsussex.gov.uk

**Daily number of confirmed Covid-19 cases; Pillar 1 and 2 combined; West Sussex**

Confirmed cases by specimen date; as at 29 November 2021



The black line represents the average number of new cases confirmed in the previous seven days. Cases after the red dashed line are for days in which we do not believe we have all the results in yet.

Source: <https://coronavirus.data.gov.uk/>

**Pillar 1** includes NHS testing, such as tests of people being admitted to hospital or being discharged to a health/care home setting, pre-operative testing etc.

**Pillar 2** is wider community testing

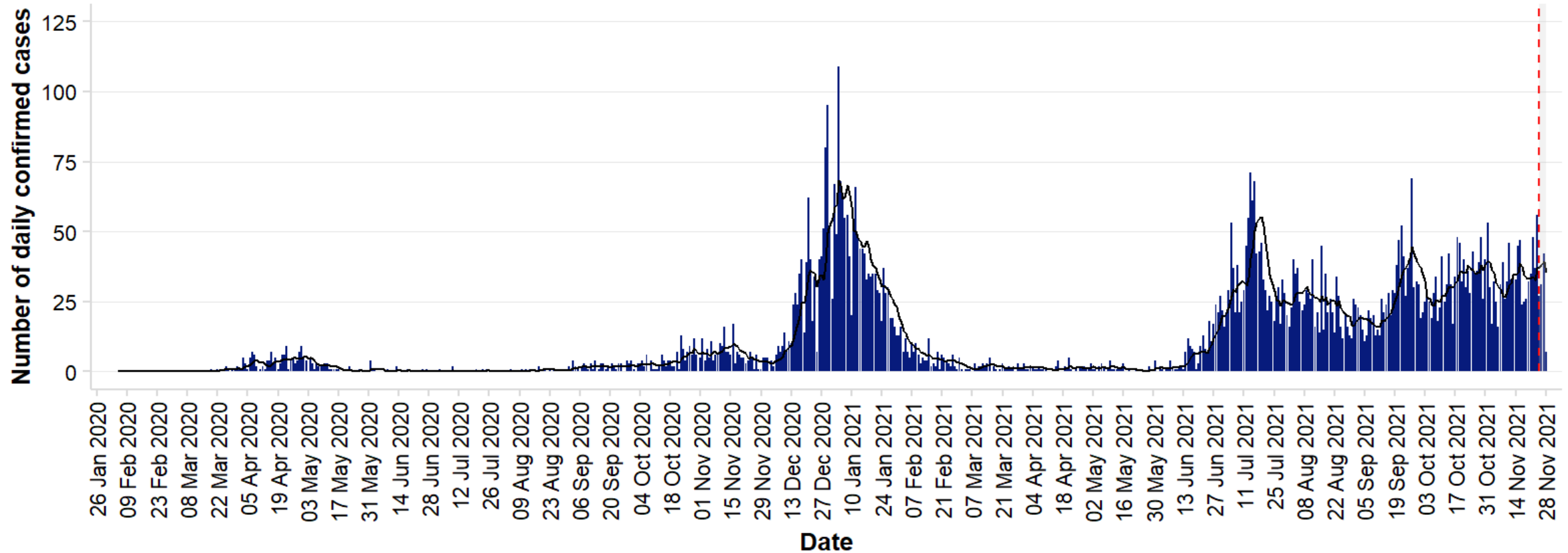
The most recent cases may not be complete due to a time lag in reporting

Pack date: 29 November 2021

Slide 2

**Daily number of confirmed Covid-19 cases; Pillar 1 and 2 combined; Adur**

Confirmed cases by specimen date; as at 29 November 2021



The black line represents the average number of new cases confirmed in the previous seven days. Cases after the red dashed line are for days in which we do not believe we have all the results in yet.

Source: <https://coronavirus.data.gov.uk/>

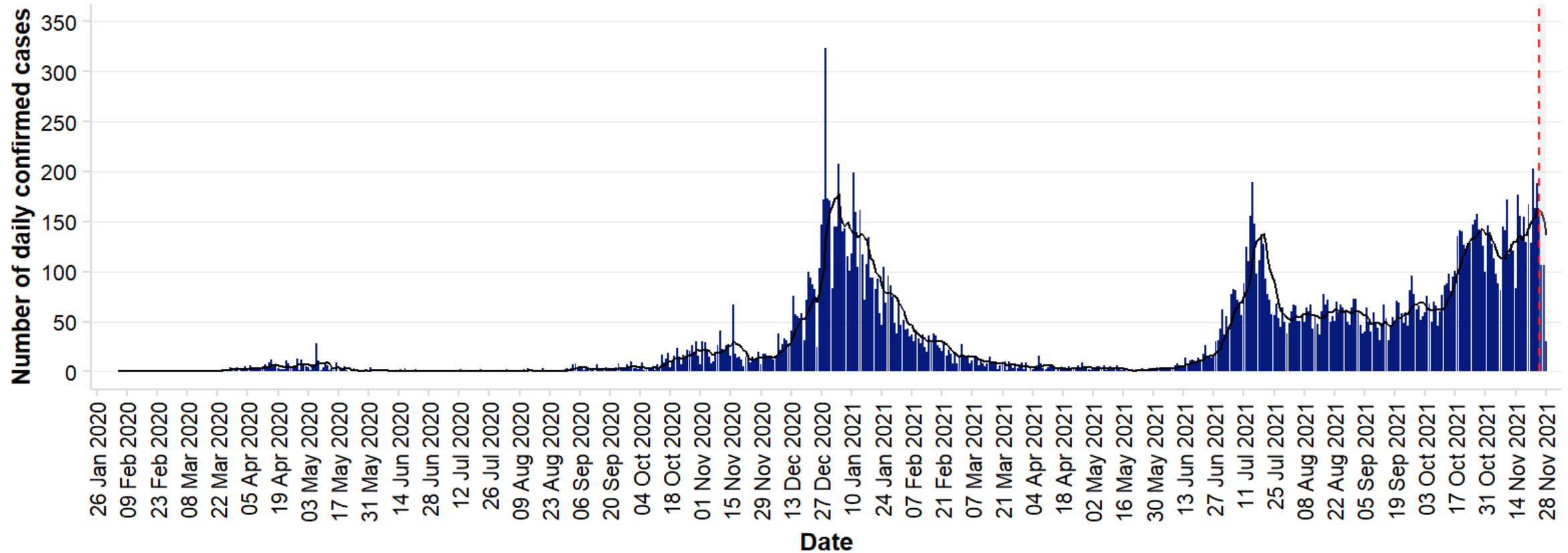
**Pillar 1** includes NHS testing, such as tests of people being admitted to hospital or being discharged to a health/care home setting, pre-operative testing etc.  
**Pillar 2** is wider community testing  
 The most recent cases may not be complete due to a time lag in reporting

Pack date: 29 November 2021

Slide 3

**Daily number of confirmed Covid-19 cases; Pillar 1 and 2 combined; Arun**

Confirmed cases by specimen date; as at 29 November 2021



The black line represents the average number of new cases confirmed in the previous seven days. Cases after the red dashed line are for days in which we do not believe we have all the results in yet.

Source: <https://coronavirus.data.gov.uk/>

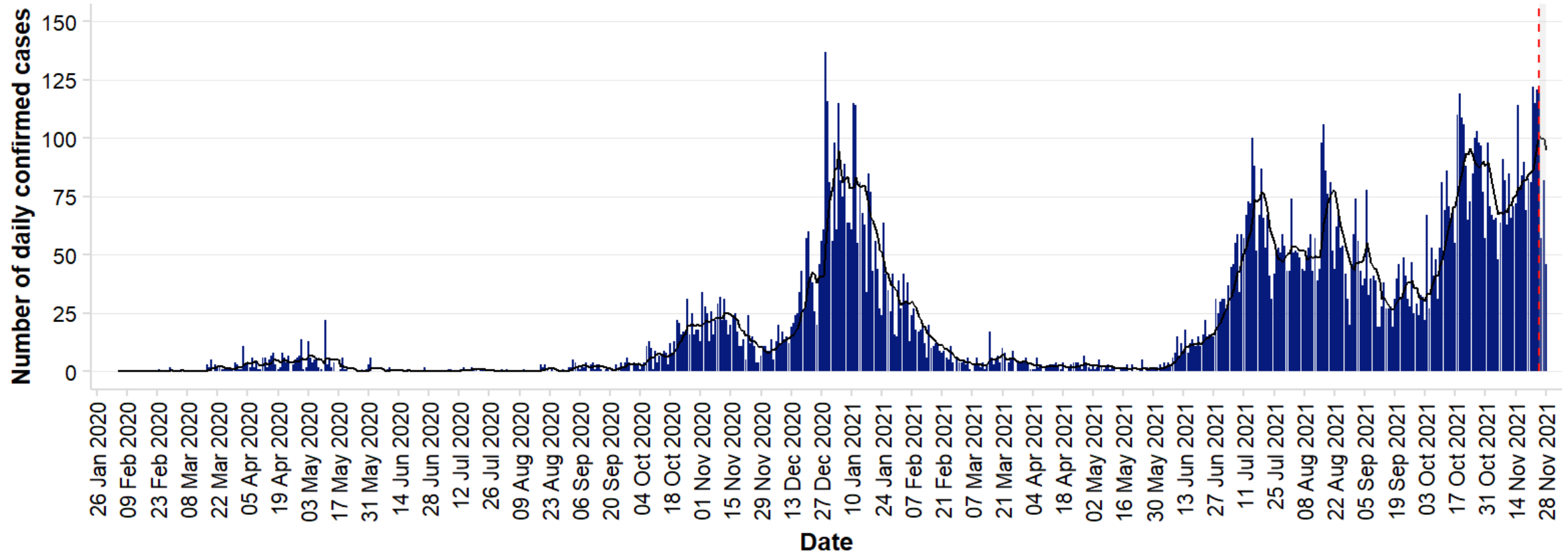
**Pillar 1** includes NHS testing, such as tests of people being admitted to hospital or being discharged to a health/care home setting, pre-operative testing etc.  
**Pillar 2** is wider community testing  
 The most recent cases may not be complete due to a time lag in reporting

Pack date: 29 November 2021

Slide 4

**Daily number of confirmed Covid-19 cases; Pillar 1 and 2 combined; Chichester**

Confirmed cases by specimen date; as at 29 November 2021



The black line represents the average number of new cases confirmed in the previous seven days. Cases after the red dashed line are for days in which we do not believe we have all the results in yet.

Source: <https://coronavirus.data.gov.uk/>

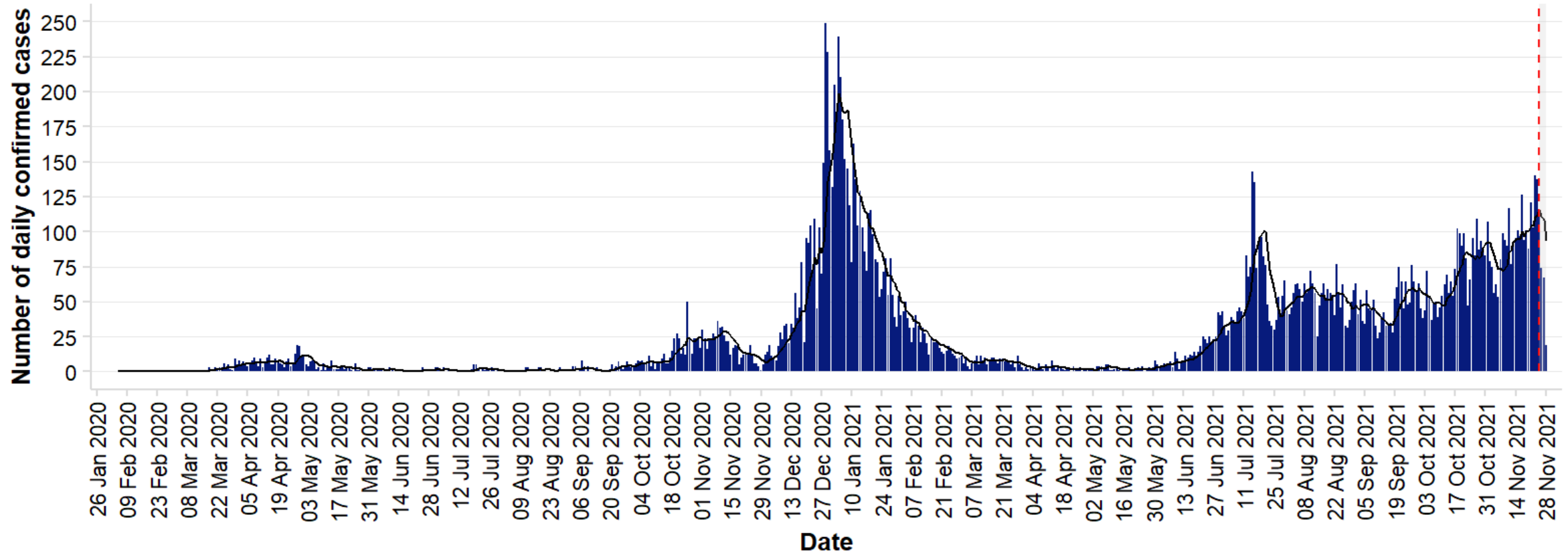
**Pillar 1** includes NHS testing, such as tests of people being admitted to hospital or being discharged to a health/care home setting, pre-operative testing etc.  
**Pillar 2** is wider community testing  
 The most recent cases may not be complete due to a time lag in reporting

Pack date: 29 November 2021

Slide 5

**Daily number of confirmed Covid-19 cases; Pillar 1 and 2 combined; Crawley**

Confirmed cases by specimen date; as at 29 November 2021



The black line represents the average number of new cases confirmed in the previous seven days. Cases after the red dashed line are for days in which we do not believe we have all the results in yet.

Source: <https://coronavirus.data.gov.uk/>

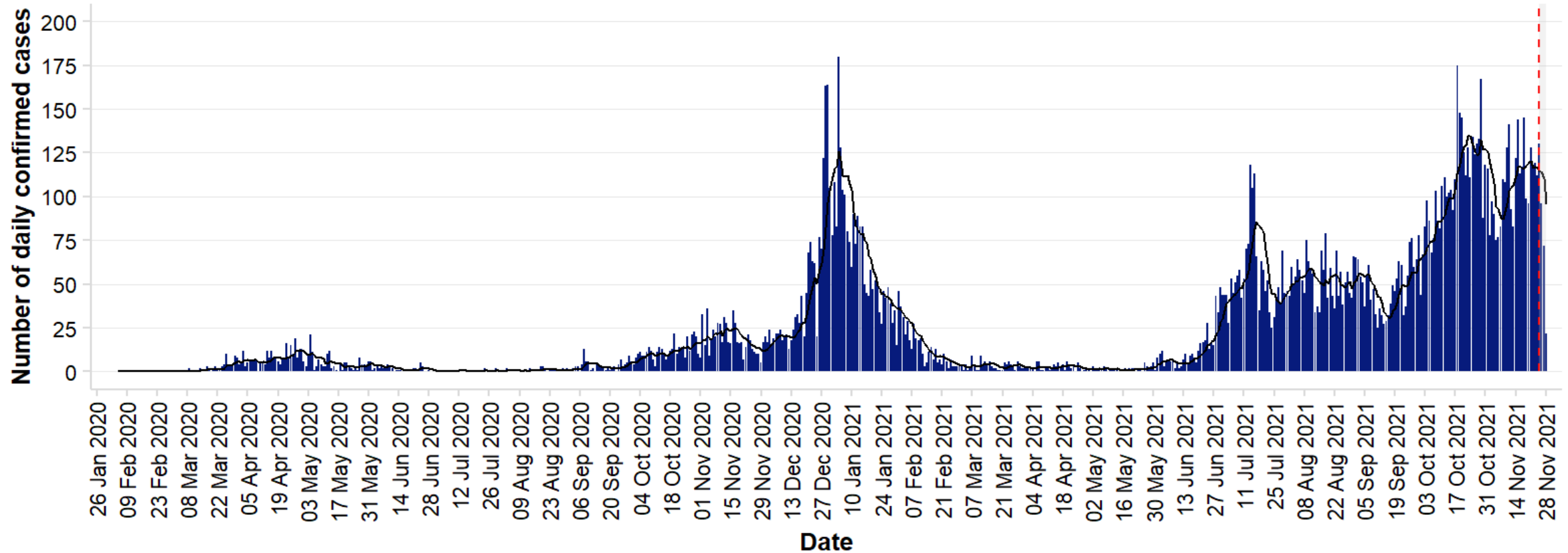
**Pillar 1** includes NHS testing, such as tests of people being admitted to hospital or being discharged to a health/care home setting, pre-operative testing etc.  
**Pillar 2** is wider community testing  
 The most recent cases may not be complete due to a time lag in reporting

Pack date: 29 November 2021

Slide 6

**Daily number of confirmed Covid-19 cases; Pillar 1 and 2 combined; Horsham**

Confirmed cases by specimen date; as at 29 November 2021



The black line represents the average number of new cases confirmed in the previous seven days. Cases after the red dashed line are for days in which we do not believe we have all the results in yet.

Source: <https://coronavirus.data.gov.uk/>

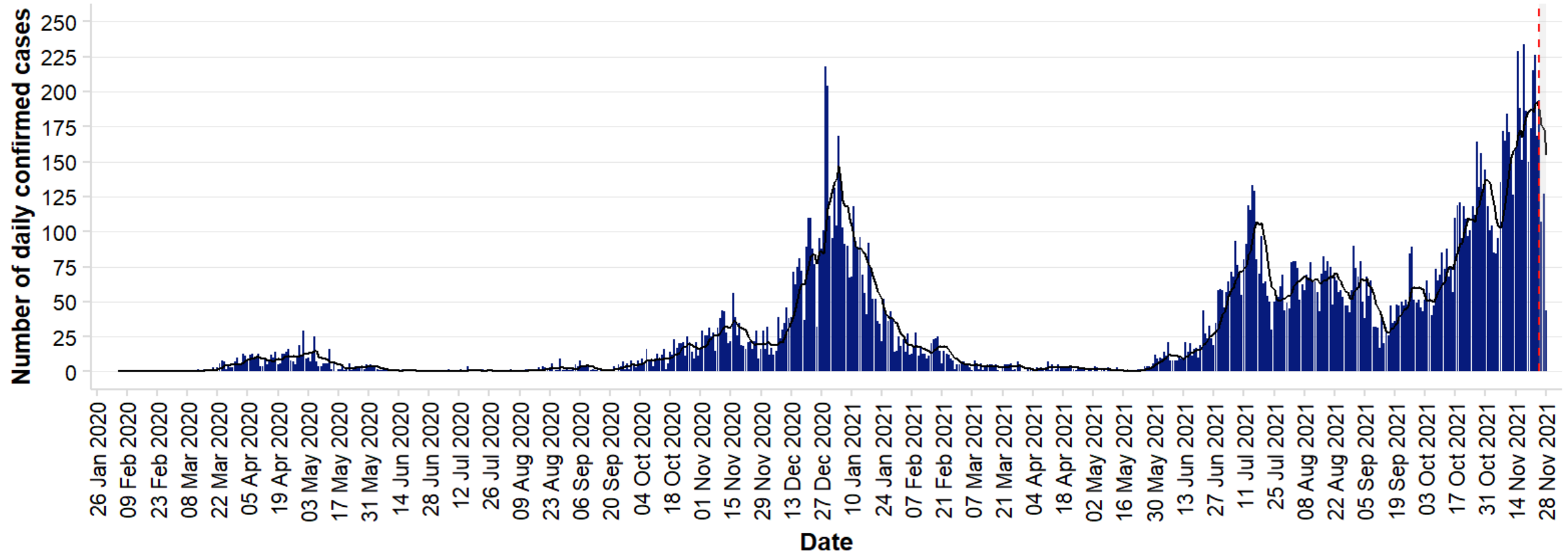
**Pillar 1** includes NHS testing, such as tests of people being admitted to hospital or being discharged to a health/care home setting, pre-operative testing etc.  
**Pillar 2** is wider community testing  
 The most recent cases may not be complete due to a time lag in reporting

Pack date: 29 November 2021

Slide 7

**Daily number of confirmed Covid-19 cases; Pillar 1 and 2 combined; Mid Sussex**

Confirmed cases by specimen date; as at 29 November 2021



The black line represents the average number of new cases confirmed in the previous seven days. Cases after the red dashed line are for days in which we do not believe we have all the results in yet.

Source: <https://coronavirus.data.gov.uk/>

**Pillar 1** includes NHS testing, such as tests of people being admitted to hospital or being discharged to a health/care home setting, pre-operative testing etc.  
**Pillar 2** is wider community testing  
 The most recent cases may not be complete due to a time lag in reporting

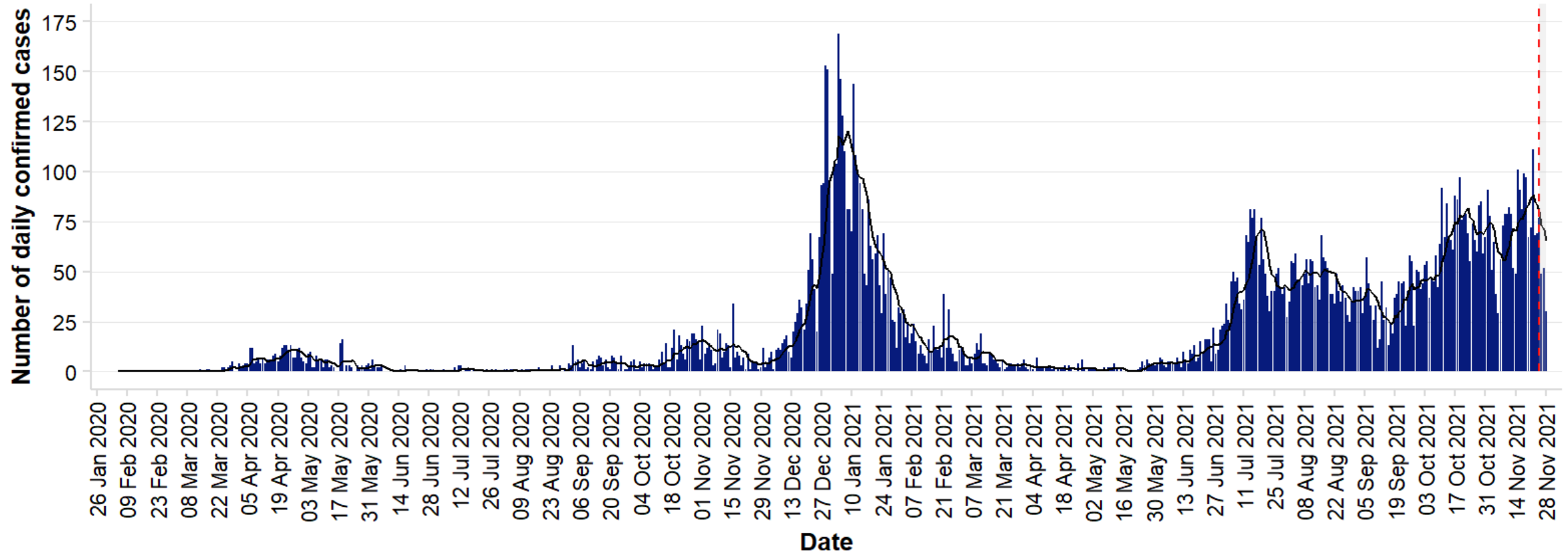
Pack date: 29 November 2021

Slide 8



**Daily number of confirmed Covid-19 cases; Pillar 1 and 2 combined; Worthing**

Confirmed cases by specimen date; as at 29 November 2021



The black line represents the average number of new cases confirmed in the previous seven days. Cases after the red dashed line are for days in which we do not believe we have all the results in yet.

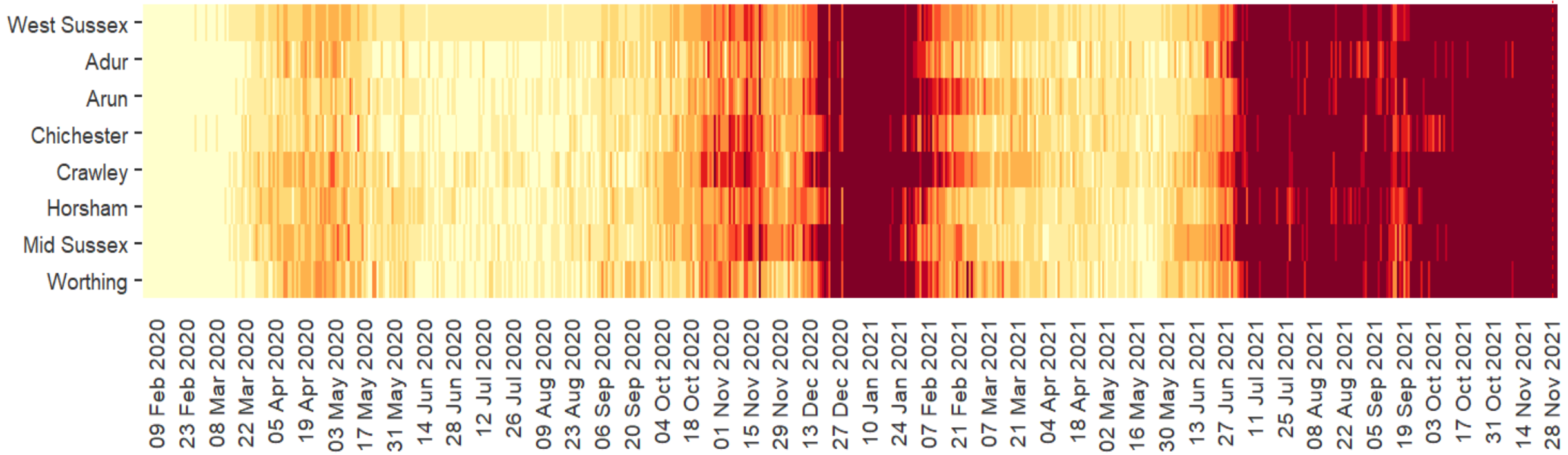
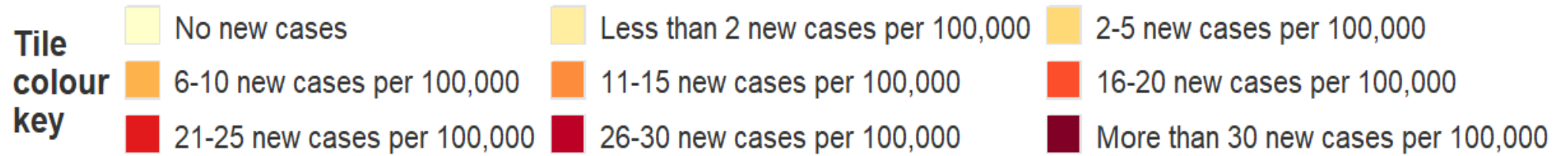
Source: <https://coronavirus.data.gov.uk/>

**Pillar 1** includes NHS testing, such as tests of people being admitted to hospital or being discharged to a health/care home setting, pre-operative testing etc.  
**Pillar 2** is wider community testing  
 The most recent cases may not be complete due to a time lag in reporting

Pack date: 29 November 2021

Slide 9

Summary of new confirmed Covid-19 cases per 100,000 population (all ages); as at 29 November



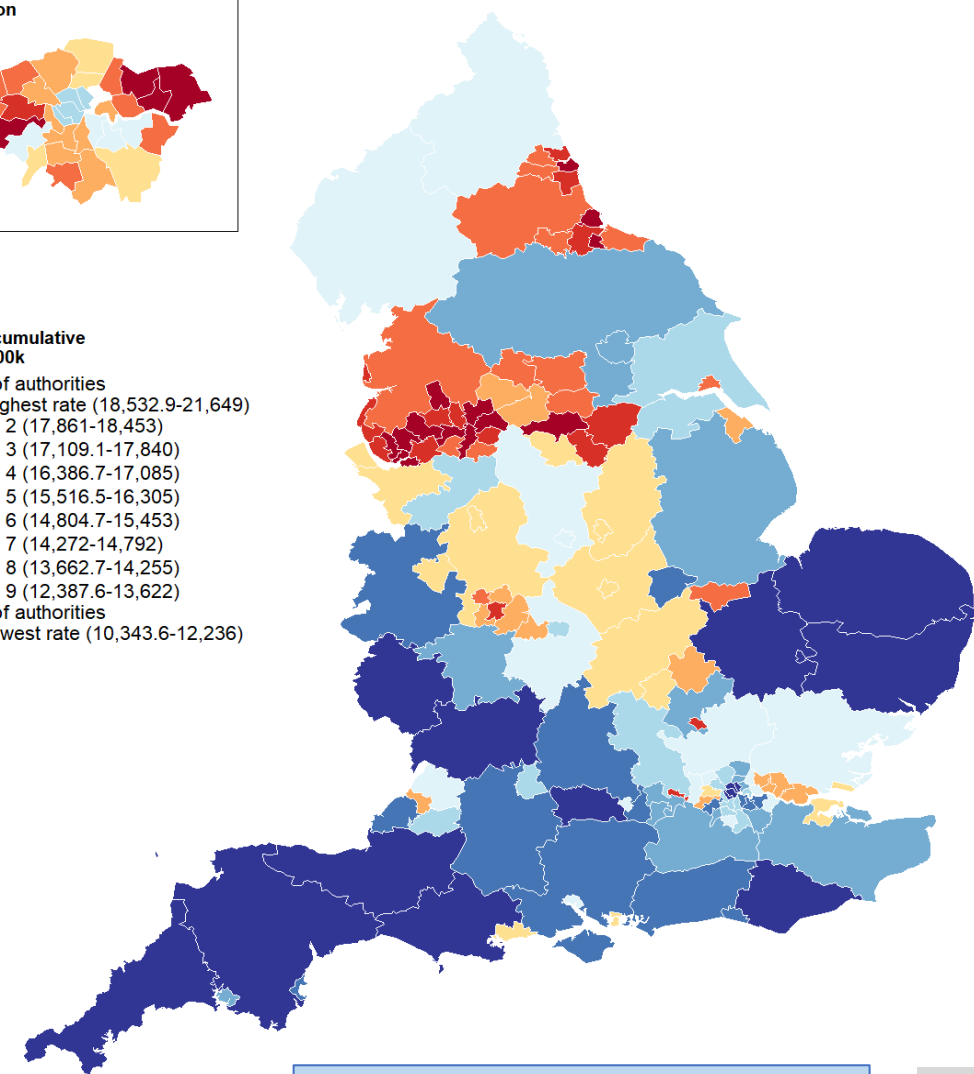
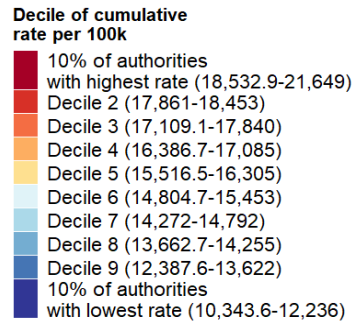
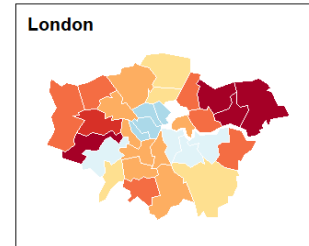
Cases for dates after the red dashed line are not considered complete due to a lag in test result reporting.

Upper Tier Local Authority cumulative cases as at 29 November

Name	Cumulative cases	Cumulative rate per 100,000 residents	Local Authority Rank (out of 149) where 1 = Highest Rate per 100,000	Decile of cumulative rate per 100,000
West Sussex	112,614	12,979.4	129th	Decile 9
England	8,639,754	15,278.0	-	-
South East region	1,274,383	13,826.0	-	-

Cumulative rate of confirmed Covid-19 cases per 100,000 population (all ages); Pillar 1 and 2 combined; Upper Tier Local and Unitary Authorities

Confirmed cases by specimen date; as at 29 November 2021



What is a decile?

Every area in England is ranked from highest to lowest rate of confirmed COVID-19 cases per 100,000 population and then areas are divided 10 groups each representing 10% of the areas in England.

West Sussex is in the 9th decile.

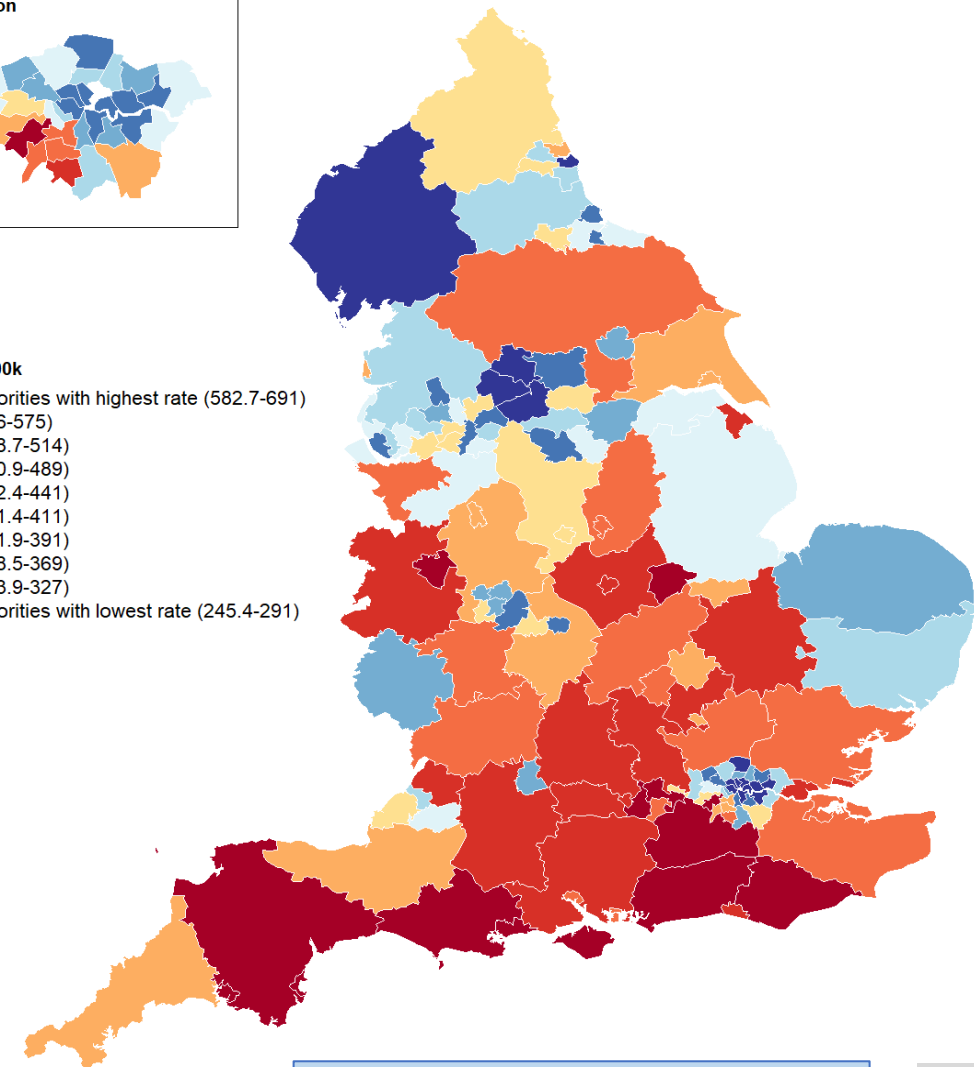
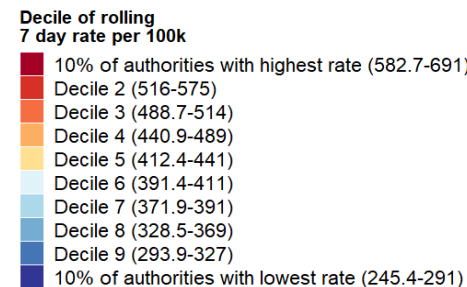
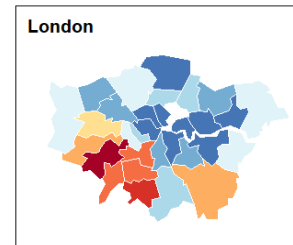
Source: <https://coronavirus.data.gov.uk/>

**Upper Tier Local Authority rolling 7 day cases as at 29 November**

Name	Rolling 7-day new cases	Rolling 7-day case rate per 100,000	Local Authority Rank (out of 149) where 1 = Highest Rolling 7-day rate per 100,000	Decile of rolling rate per 100,000
West Sussex	5,611	646.7	4th	10% of authorities with highest rate
England	248,888	440.1	-	-
South East region	52,791	572.7	-	-

**Rolling 7 day rate of confirmed Covid-19 cases per 100,000 population (all ages); Pillar 1 and 2 combined; Upper Tier Local and Unitary Authorities**

Confirmed cases in the seven days to 24 November; as at 29 November 2021



**What is a decile?**

Every area in England is ranked from highest to lowest rate of confirmed COVID-19 cases per 100,000 population and then areas are divided 10 groups each representing 10% of the areas in England.

**Note that the very recent days are excluded in the 7-day total as these are thought to be incomplete. As such, this data represents cases in the seven days to 24 November**

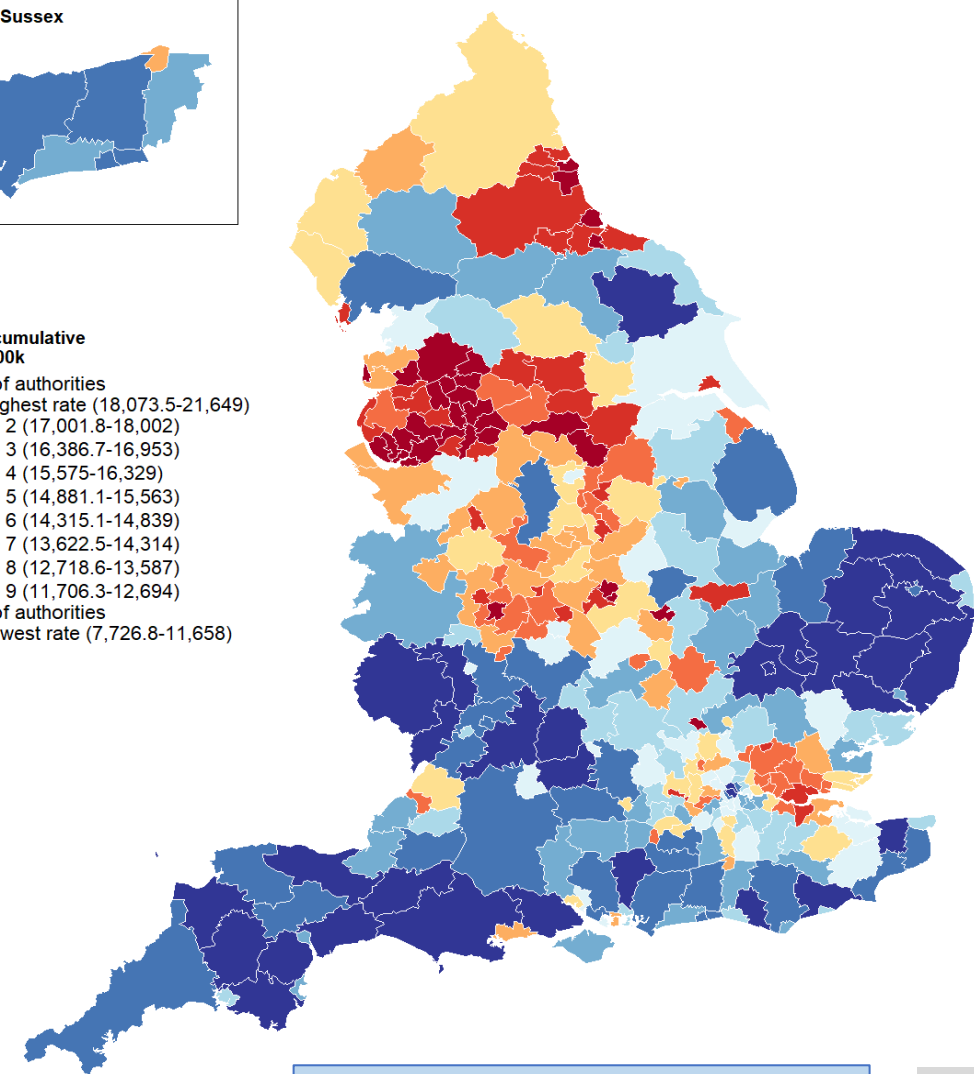
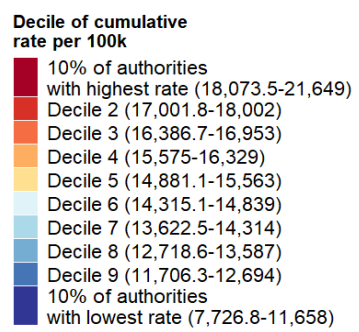
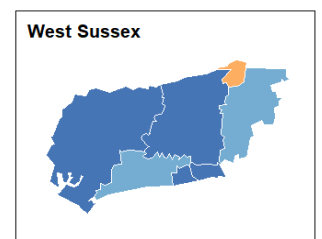
Source: <https://coronavirus.data.gov.uk/>

Lower Tier Local Authority cumulative cases as at 29 November

Name	Cumulative cases	Cumulative rate per 100,000 residents	Local Authority Rank (out of 315) where 1 = Highest Rate per 100,000	Decile of cumulative rate per 100,000
Adur	7,701	11,997.8	271st	Decile 9
Arun	21,604	13,408.4	226th	Decile 8
Chichester	14,315	11,781.1	280th	Decile 9
Crawley	17,992	15,996.6	102nd	Decile 4
Horsham	17,209	11,829.6	276th	Decile 9
Mid Sussex	20,206	13,281.0	233rd	Decile 8
Worthing	13,587	12,270.7	266th	Decile 9
West Sussex	112,614	12,979.4	-	-
South East region	1,274,383	13,826.0	-	-
England	8,639,754	15,278.0	-	-

Cumulative rate of confirmed Covid-19 cases per 100,000 population (all ages); Pillar 1 and 2 combined; Lower Tier Local and Unitary Authorities

Confirmed cases by specimen date; as at 29 November 2021



What is a decile?

Every area in England is ranked from highest to lowest rate of confirmed COVID-19 cases per 100,000 population and then areas are divided 10 groups each representing 10% of the areas in England.

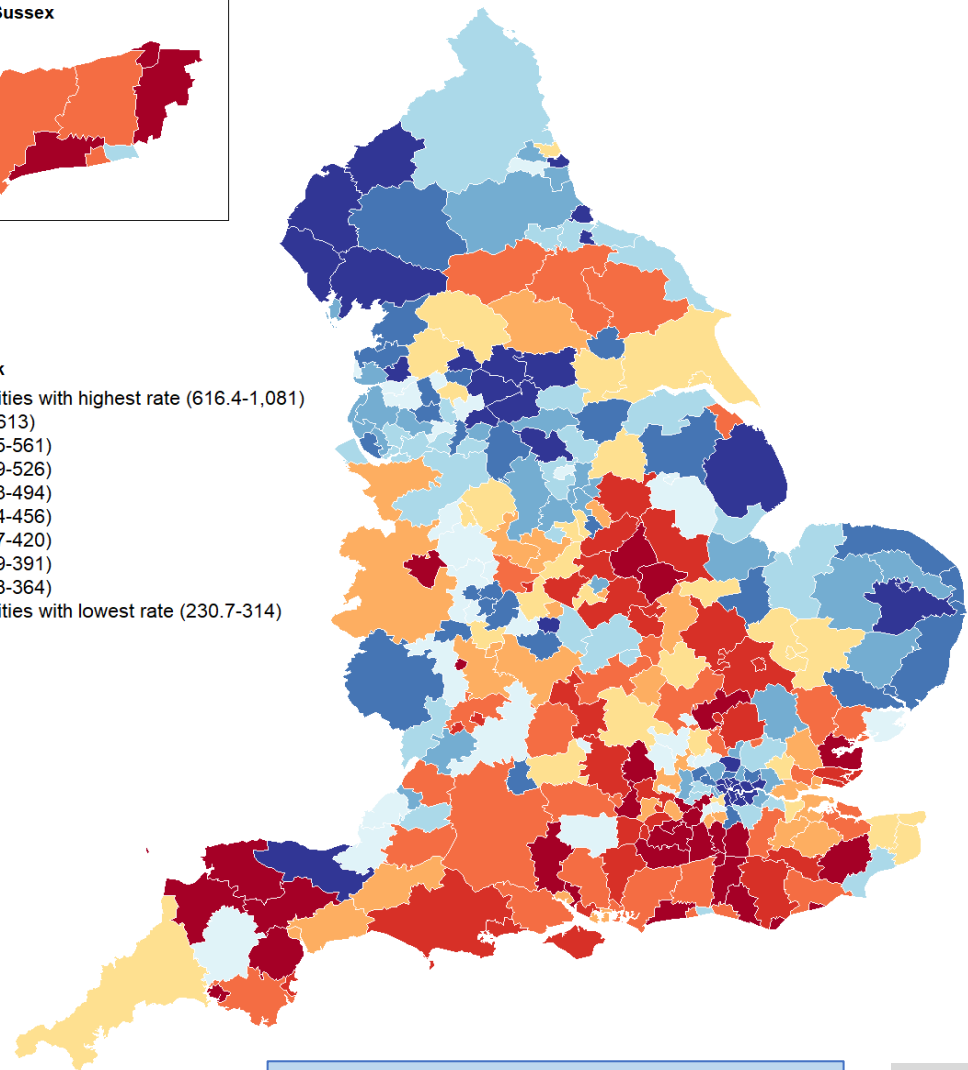
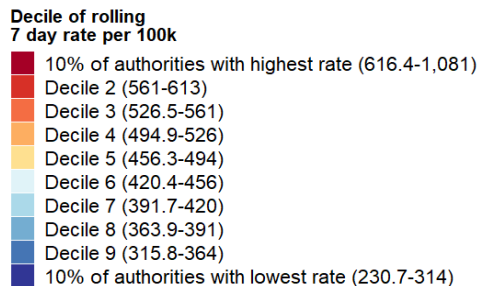
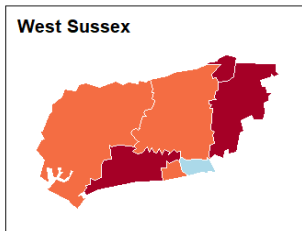
Source: <https://coronavirus.data.gov.uk/>

Lower Tier Local Authority rolling cases as at 29 November

Name	Rolling 7-day new cases	Rolling 7-day case rate per 100,000	Local Authority Rank (out of 315) where 1 = Highest Rolling 7-day rate per 100,000	Decile of rolling rate per 100,000
Adur	259	403.5	200th	Decile 7
Arun	1,135	704.4	14th	10% of authorities with highest rate
Chichester	681	560.5	66th	Decile 3
Crawley	784	697.0	17th	10% of authorities with highest rate
Horsham	816	560.9	63rd	Decile 3
Mid Sussex	1,353	889.3	3rd	10% of authorities with highest rate
Worthing	583	526.5	93rd	Decile 3
West Sussex	5,611	646.7	-	-
England	248,888	440.1	-	-
South East region	52,791	572.7	-	-

Rolling 7 day rate of confirmed Covid-19 cases per 100,000 population (all ages); Pillar 1 and 2 combined; Lower Tier Local and Unitary Authorities

Confirmed cases in the seven days to 24 November; as at 29 November 2021



What is a decile?

Every area in England is ranked from highest to lowest rate of confirmed COVID-19 cases per 100,000 population and then areas are divided 10 groups each representing 10% of the areas in England.

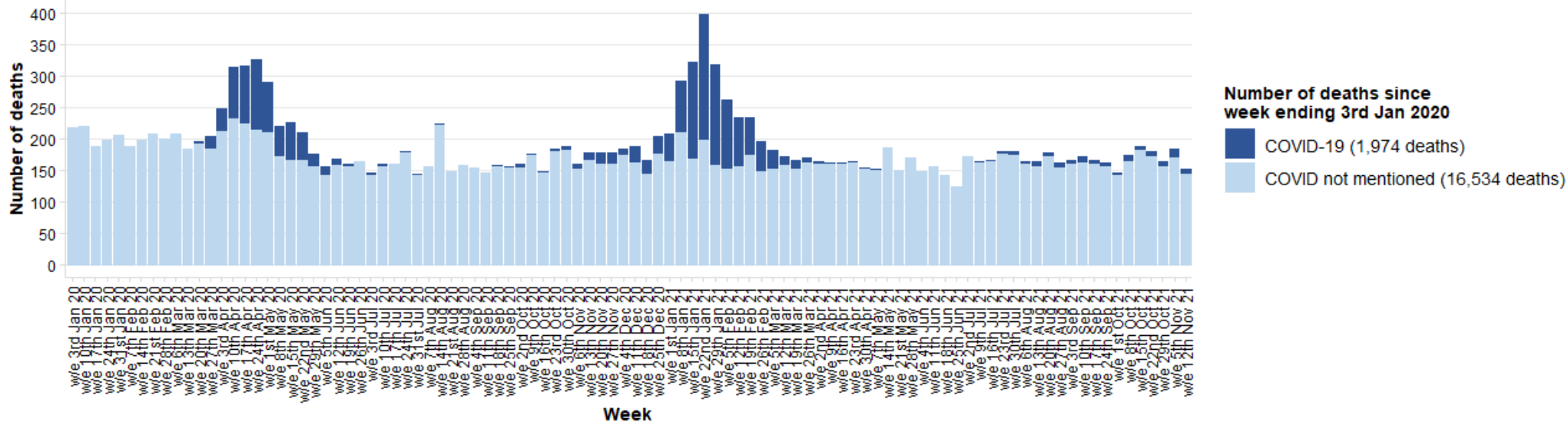
**Note that the very recent days are excluded in the 7-day total as these are thought to be incomplete. As such, this data represents cases in the seven days to 24 November**

Source: <https://coronavirus.data.gov.uk/>

Pack date: 29  
November 2021

**Weekly deaths; West Sussex; w/e 3rd Jan 2020 - w/e 12th Nov 21**

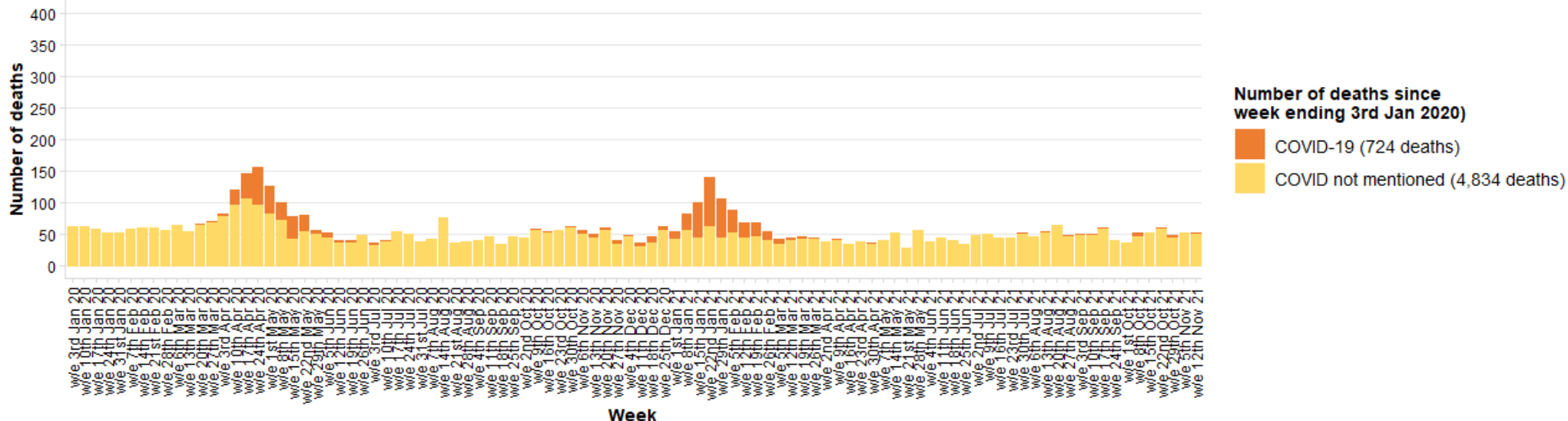
By week of occurrence and by Covid-19 mentioned on death certificate (deaths registered by 20 November 2021)



Source: Office for National Statistics

**Weekly deaths in care homes; West Sussex; w/e 3rd Jan 2020 - w/e 12th Nov 21**

By week of occurrence and by Covid-19 mentioned on death certificate (deaths registered by 20 November 2021)

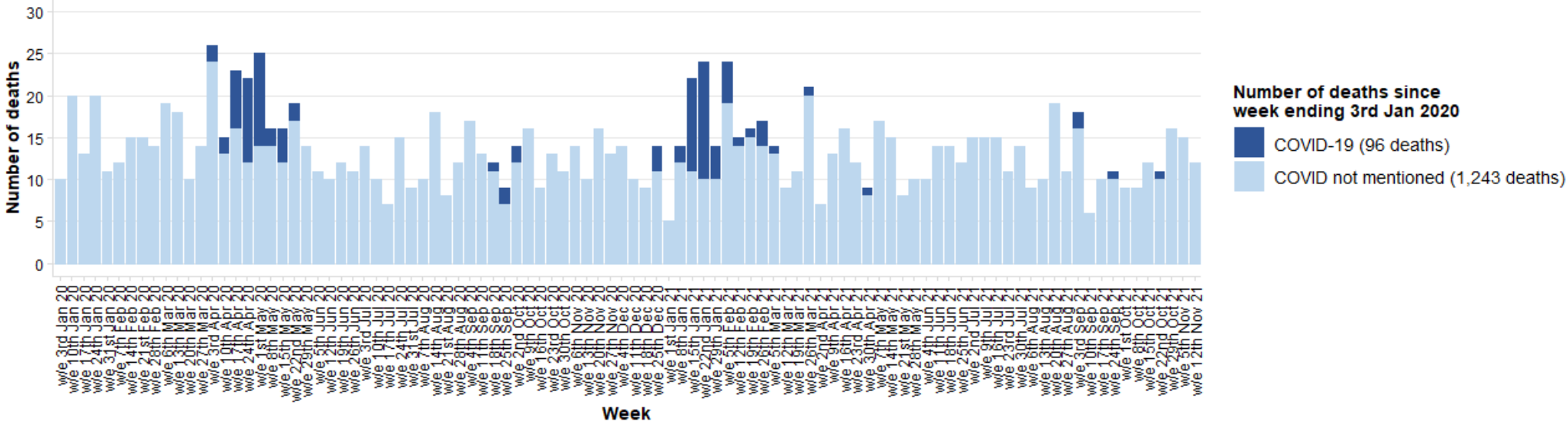


Pack date: 29  
November 2021

Source: Office for  
National Statistics

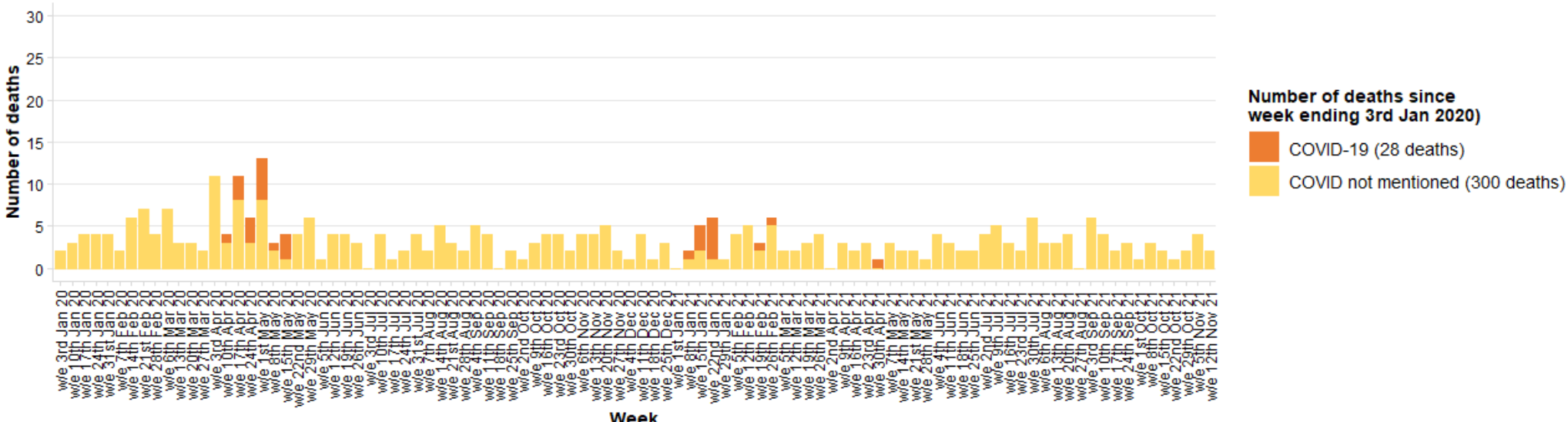
**Weekly deaths; Adur; w/e 3rd Jan 2020 - w/e 12th Nov 21**

By week of occurrence and by Covid-19 mentioned on death certificate (deaths registered by 20 November 2021)



**Weekly deaths in care homes; Adur; w/e 3rd Jan 2020 - w/e 12th Nov 21**

By week of occurrence and by Covid-19 mentioned on death certificate (deaths registered by 20 November 2021)

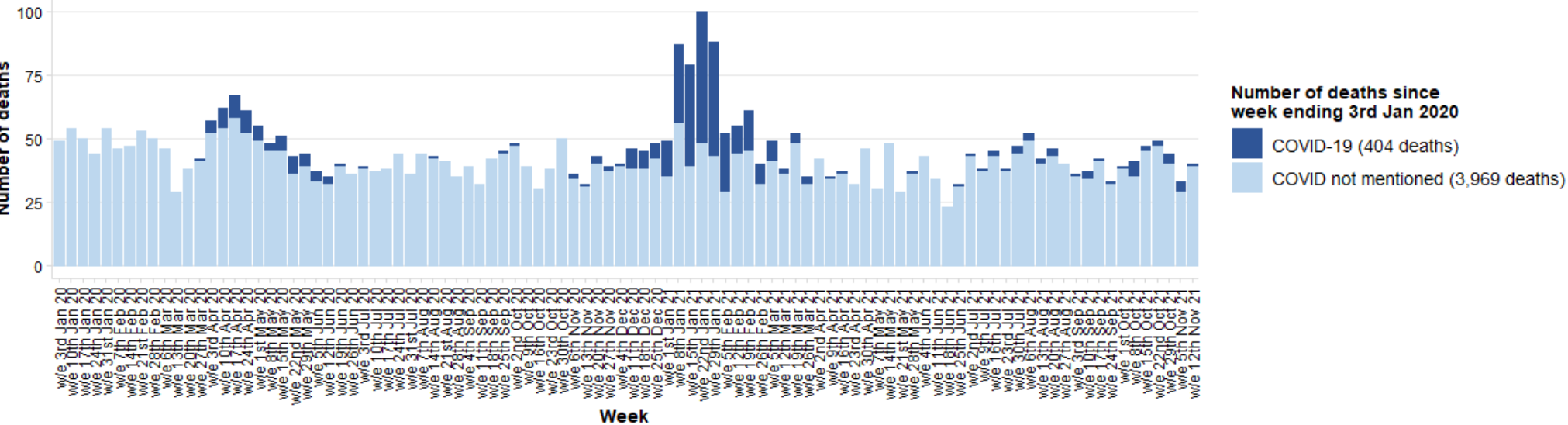




Pack date: 29  
November 2021

**Weekly deaths; Arun; w/e 3rd Jan 2020 - w/e 12th Nov 21**

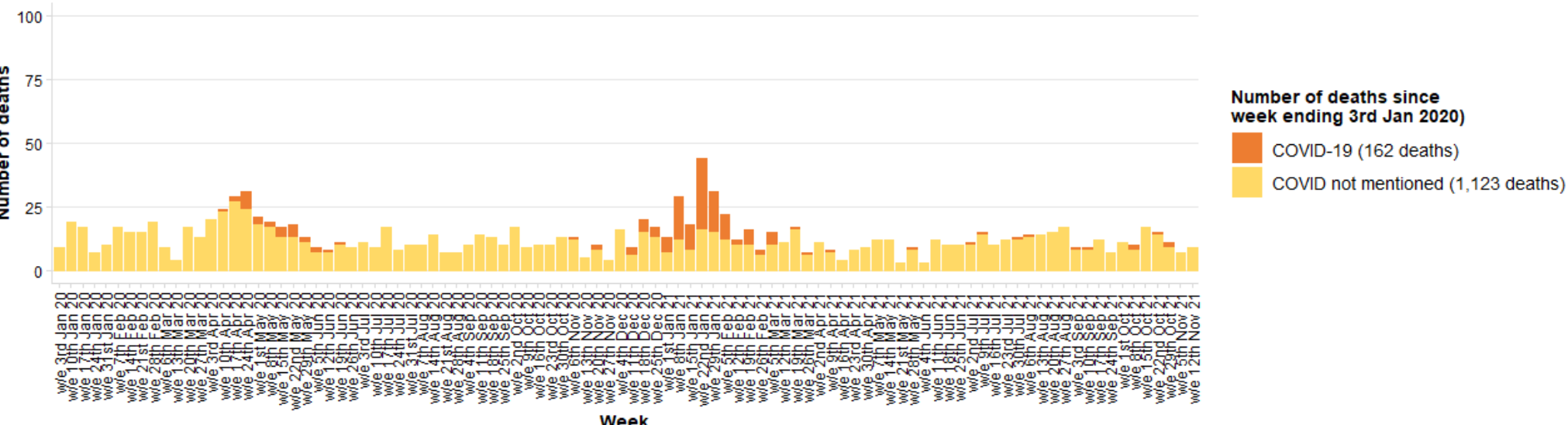
By week of occurrence and by Covid-19 mentioned on death certificate (deaths registered by 20 November 2021)



Source: Office for National Statistics

**Weekly deaths in care homes; Arun; w/e 3rd Jan 2020 - w/e 12th Nov 21**

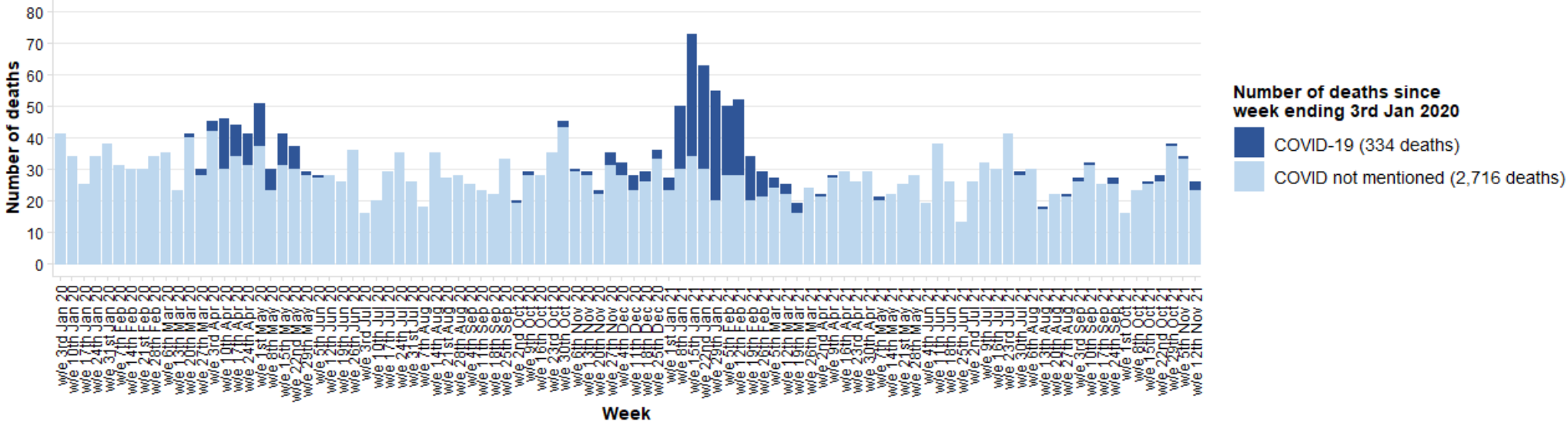
By week of occurrence and by Covid-19 mentioned on death certificate (deaths registered by 20 November 2021)



Pack date: 29  
November 2021

**Weekly deaths; Chichester; w/e 3rd Jan 2020 - w/e 12th Nov 21**

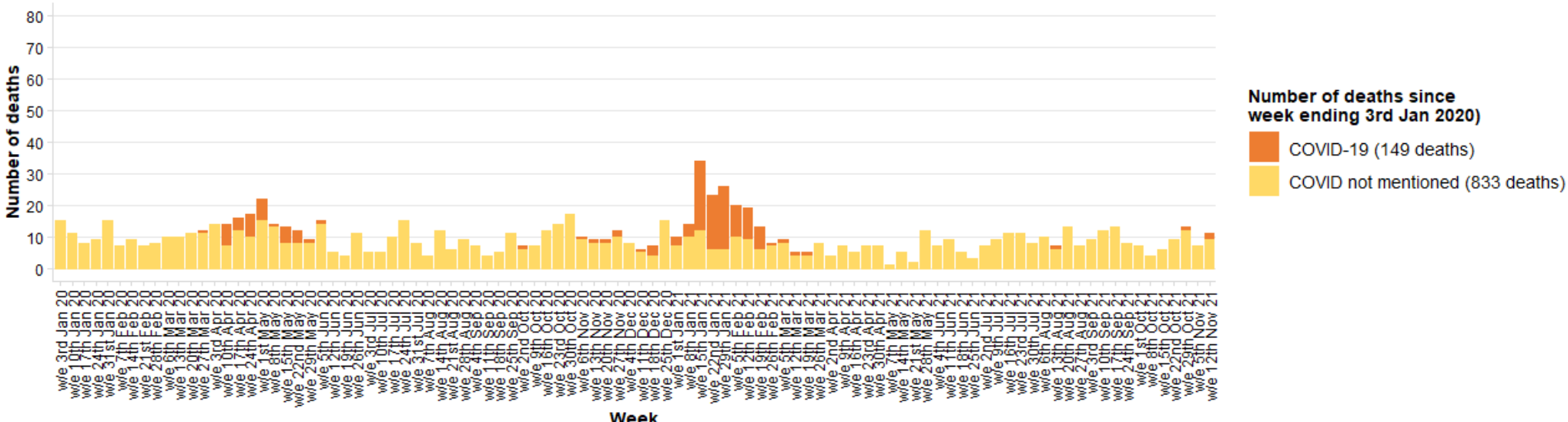
By week of occurrence and by Covid-19 mentioned on death certificate (deaths registered by 20 November 2021)



Source: Office for National Statistics

**Weekly deaths in care homes; Chichester; w/e 3rd Jan 2020 - w/e 12th Nov 21**

By week of occurrence and by Covid-19 mentioned on death certificate (deaths registered by 20 November 2021)

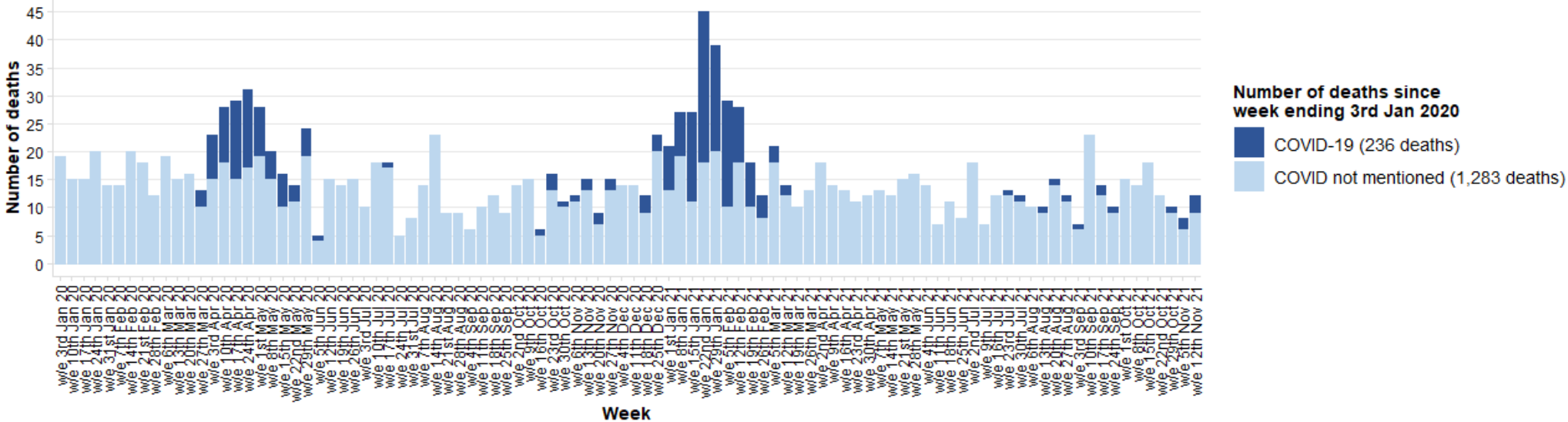


Pack date: 29  
November 2021

Source: Office for  
National Statistics

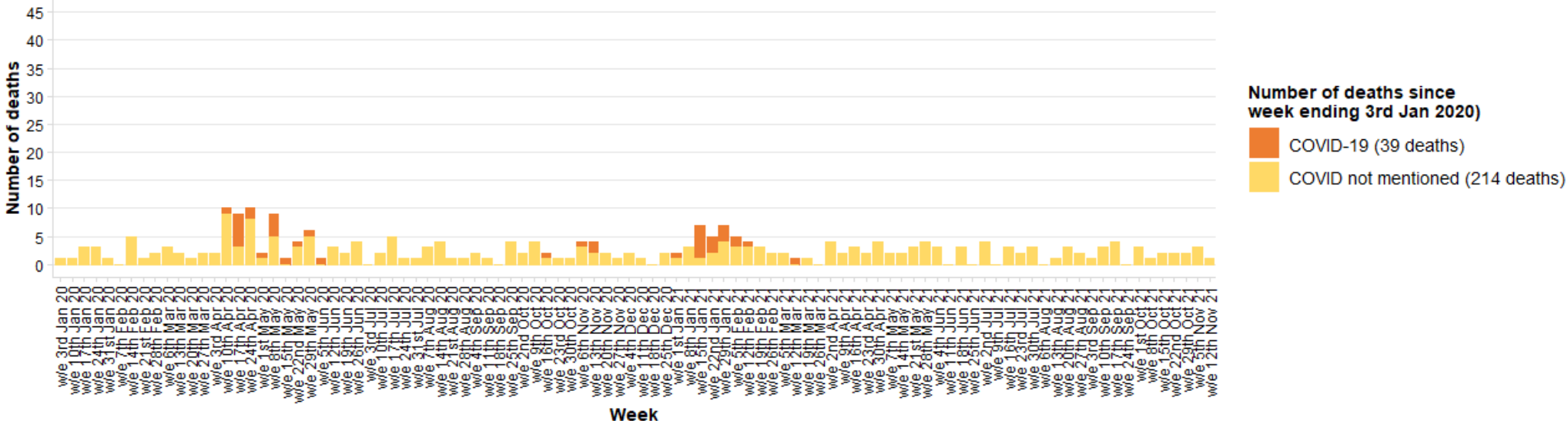
**Weekly deaths; Crawley; w/e 3rd Jan 2020 - w/e 12th Nov 21**

By week of occurrence and by Covid-19 mentioned on death certificate (deaths registered by 20 November 2021)



**Weekly deaths in care homes; Crawley; w/e 3rd Jan 2020 - w/e 12th Nov 21**

By week of occurrence and by Covid-19 mentioned on death certificate (deaths registered by 20 November 2021)

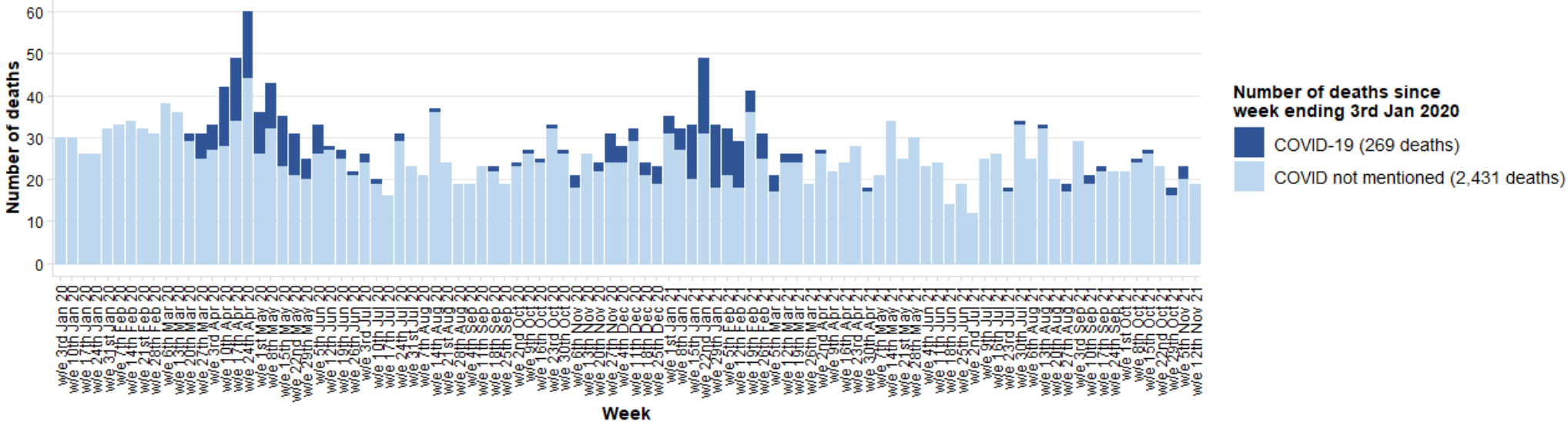


Pack date: 29  
November 2021

Source: Office for  
National Statistics

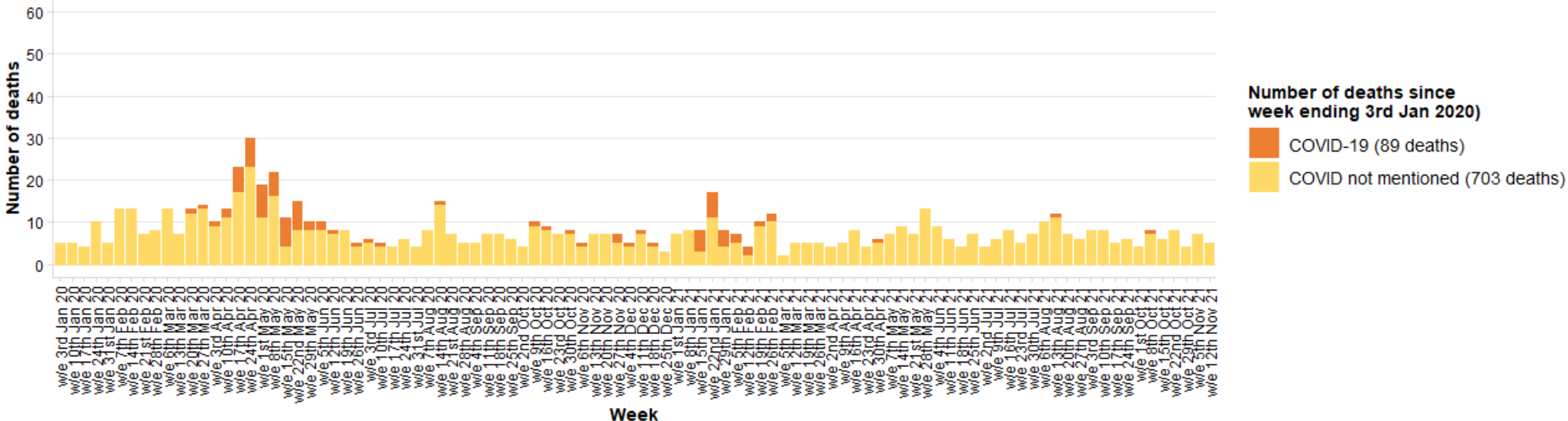
**Weekly deaths; Horsham; w/e 3rd Jan 2020 - w/e 12th Nov 21**

By week of occurrence and by Covid-19 mentioned on death certificate (deaths registered by 20 November 2021)



**Weekly deaths in care homes; Horsham; w/e 3rd Jan 2020 - w/e 12th Nov 21**

By week of occurrence and by Covid-19 mentioned on death certificate (deaths registered by 20 November 2021)

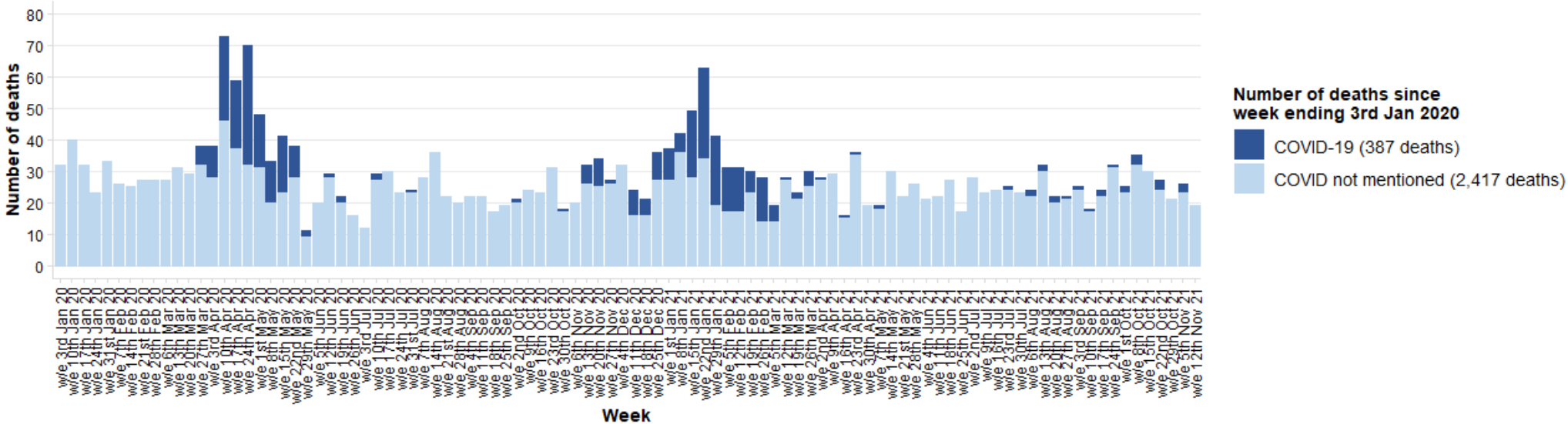


Pack date: 29  
November 2021

Source: Office for  
National Statistics

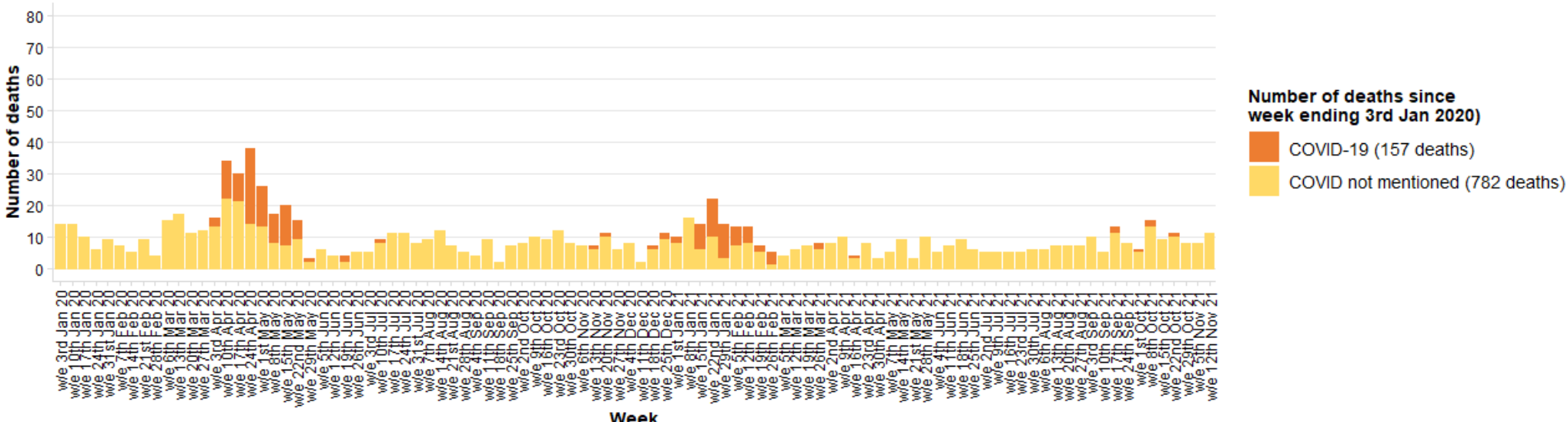
**Weekly deaths; Mid Sussex; w/e 3rd Jan 2020 - w/e 12th Nov 21**

By week of occurrence and by Covid-19 mentioned on death certificate (deaths registered by 20 November 2021)



**Weekly deaths in care homes; Mid Sussex; w/e 3rd Jan 2020 - w/e 12th Nov 21**

By week of occurrence and by Covid-19 mentioned on death certificate (deaths registered by 20 November 2021)

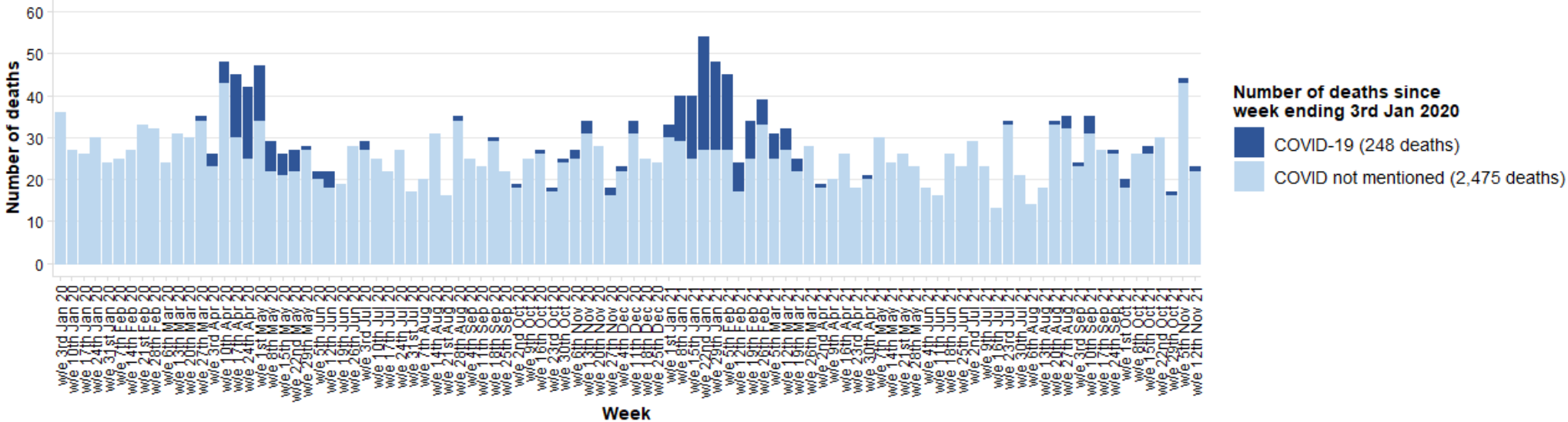


Pack date: 29  
November 2021

Source: Office for  
National Statistics

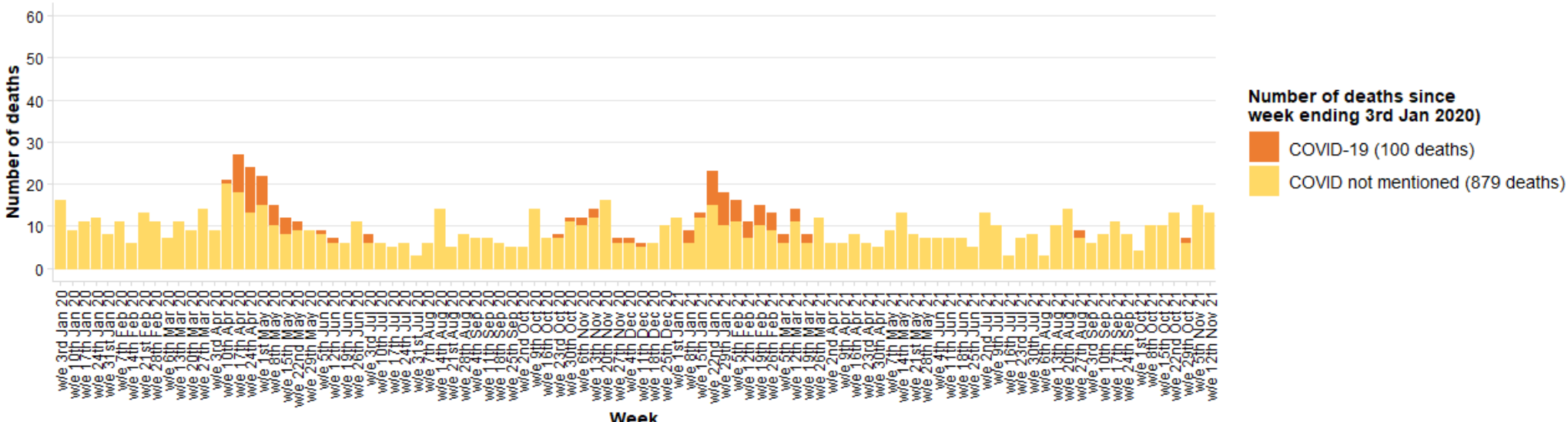
**Weekly deaths; Worthing; w/e 3rd Jan 2020 - w/e 12th Nov 21**

By week of occurrence and by Covid-19 mentioned on death certificate (deaths registered by 20 November 2021)



**Weekly deaths in care homes; Worthing; w/e 3rd Jan 2020 - w/e 12th Nov 21**

By week of occurrence and by Covid-19 mentioned on death certificate (deaths registered by 20 November 2021)



What		Link
Positive cases	Daily update on cases (shown as number of cases and also a rate per 100,000 residents)	<a href="https://coronavirus.data.gov.uk/">https://coronavirus.data.gov.uk/</a>
Positive cases and deaths	Using the cases and deaths tabs in the link - data are available at local authority level	<a href="https://coronavirus-staging.data.gov.uk/">https://coronavirus-staging.data.gov.uk/</a>
NHS Pathways (callers to 111,999 and online 111 assessments)	Information on triages of 999 and 111 callers and completed online assessments which have received a potential coronavirus (COVID-19) final disposition (number and rate per 100,000 population).	<a href="https://digital.nhs.uk/dashboards/nhs-pathways">https://digital.nhs.uk/dashboards/nhs-pathways</a>
COVID-19: outbreaks in care homes	Weekly number and percentage of care homes reporting a suspected or confirmed outbreak of COVID-19	<a href="#">Care home outbreaks</a>
Hospital Data	Regional data are in the public domain – click on the healthcare tab for information on admissions, patients in hospital and patients on ventilation	<a href="https://coronavirus-staging.data.gov.uk/">https://coronavirus-staging.data.gov.uk/</a>
Deaths in Hospitals	Daily data on deaths in specific NHS Trusts	<a href="https://www.england.nhs.uk/statistics/statistical-work-areas/covid-19-daily-deaths/">https://www.england.nhs.uk/statistics/statistical-work-areas/covid-19-daily-deaths/</a>
Deaths	Weekly data are published by the Office for National Statistics (on Tuesdays).	<a href="#">Weekly death data from ONS</a>
Deaths in care homes notified to CQC	Deaths relating to care home residents, provides some additional detail not available on ONS weekly release	<a href="#">Link to CQC Notification Data</a>
Deaths – additional analysis	The Office for National Statistics have released additional analysis – including analysis below local authority level	<a href="#">Deaths at a sub local authority level</a>
Google Community Data	Community mobility at a local authority level and compare activity (in terms of visits to type of places) with baseline period (3 Jan – 6 Feb 2020).	<a href="https://www.google.com/covid19/mobility/">https://www.google.com/covid19/mobility/</a>

Sources can (and frequently do!) change, access as at time of pack date.