



Location of site, view from North



Entrance to Woodlands Meed College



External play area with sunken trampoline



Top of "playing field" showing poly tunnel used for horticulture



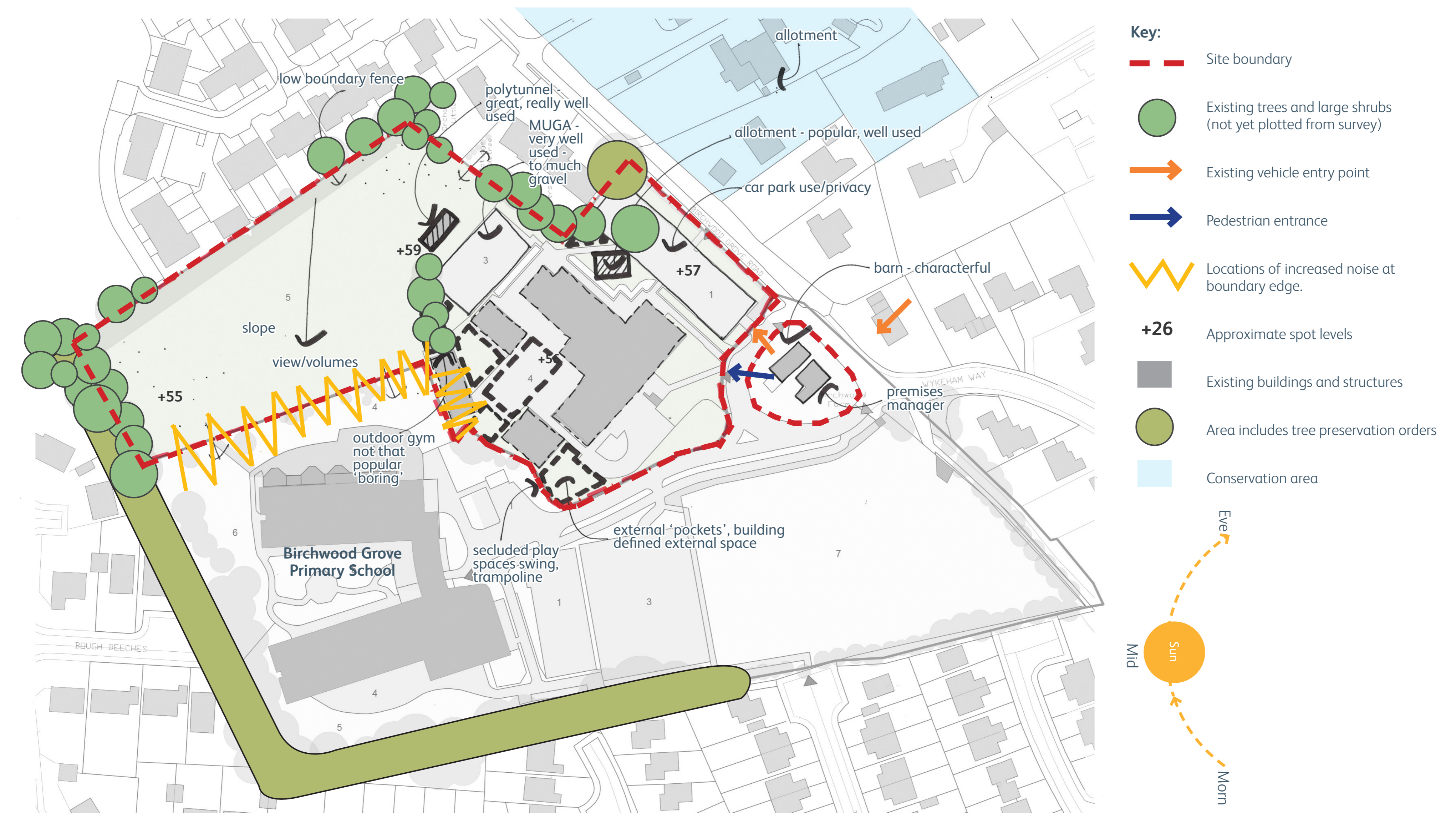
Joint driveway for the College site and Birchwood Grove Primary School



View from field back to College on left and Birchwood Grove Primary on right



View between main College building and temporary classroom blocks on the site



Site analysis

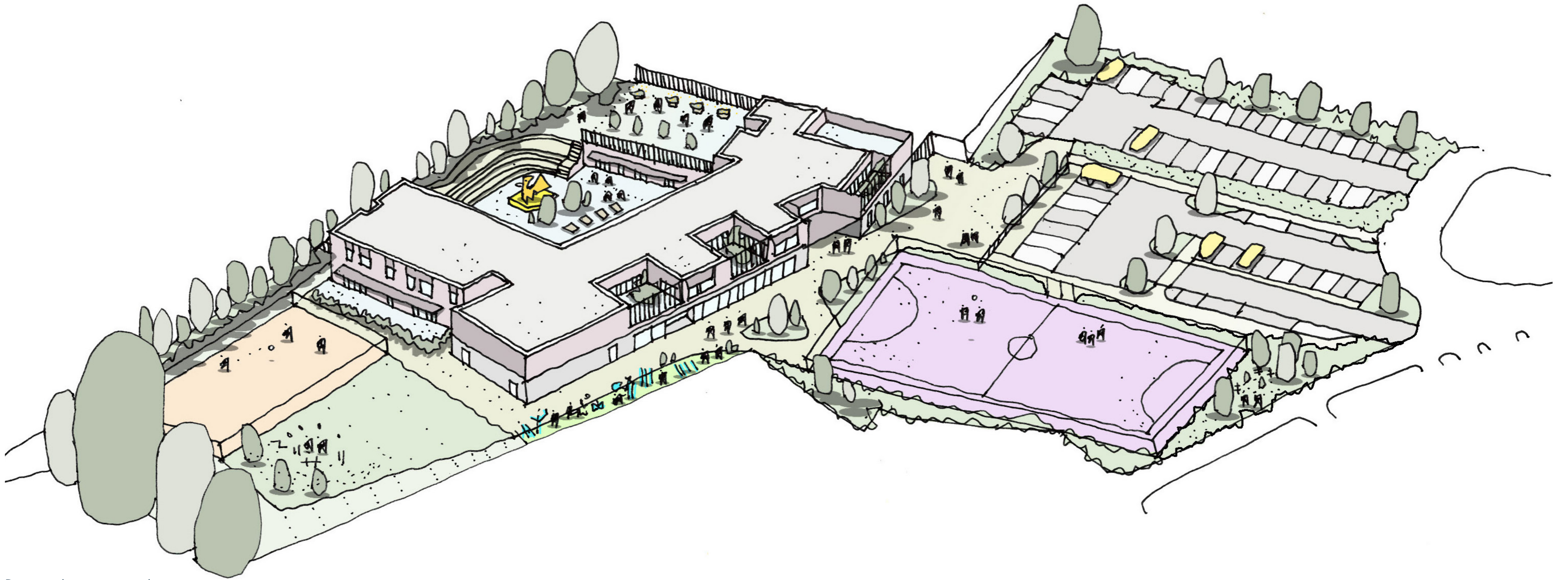
- Key:**
- Tree Route Protection Zone
 - Retaining Structure (Indicative)
 - Retained Site
 - Calm
 - Circulation
 - Classroom
 - Group
 - Plant
 - Staff
 - Store
 - WC
 - > Main Entrance incl hydro pool community access
 - > Sports Hall Community Access
 - > Sports Hall School Access
 - > Delivery and Access Gate
 - > Kitchen Deliveries
 - > External Classroom Access
-



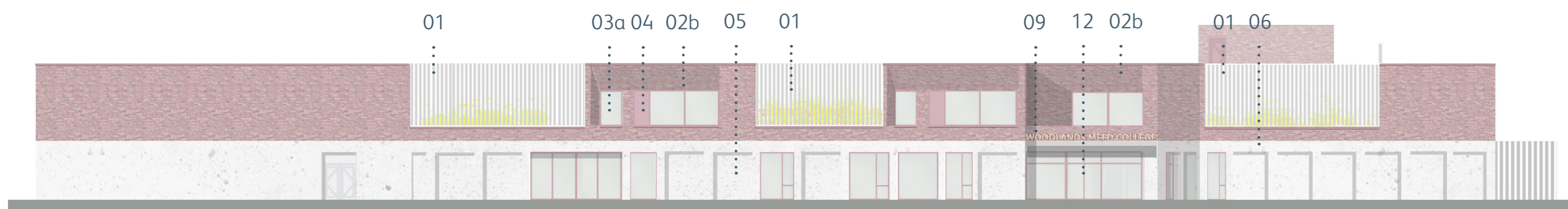
Ground Floor Plan



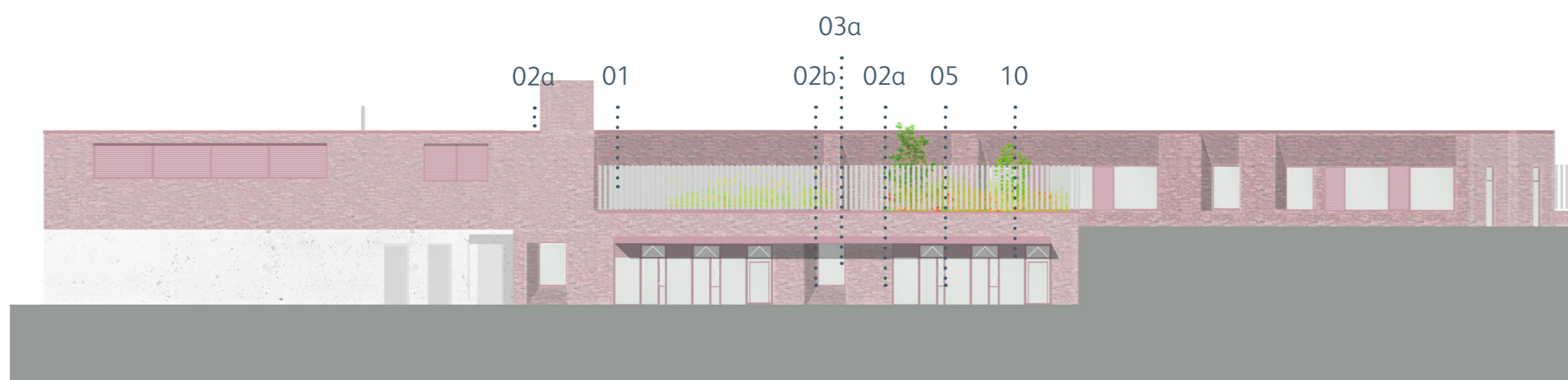
First Floor Plan



Proposed site masterplan



East Elevation



North Elevation



South Elevation

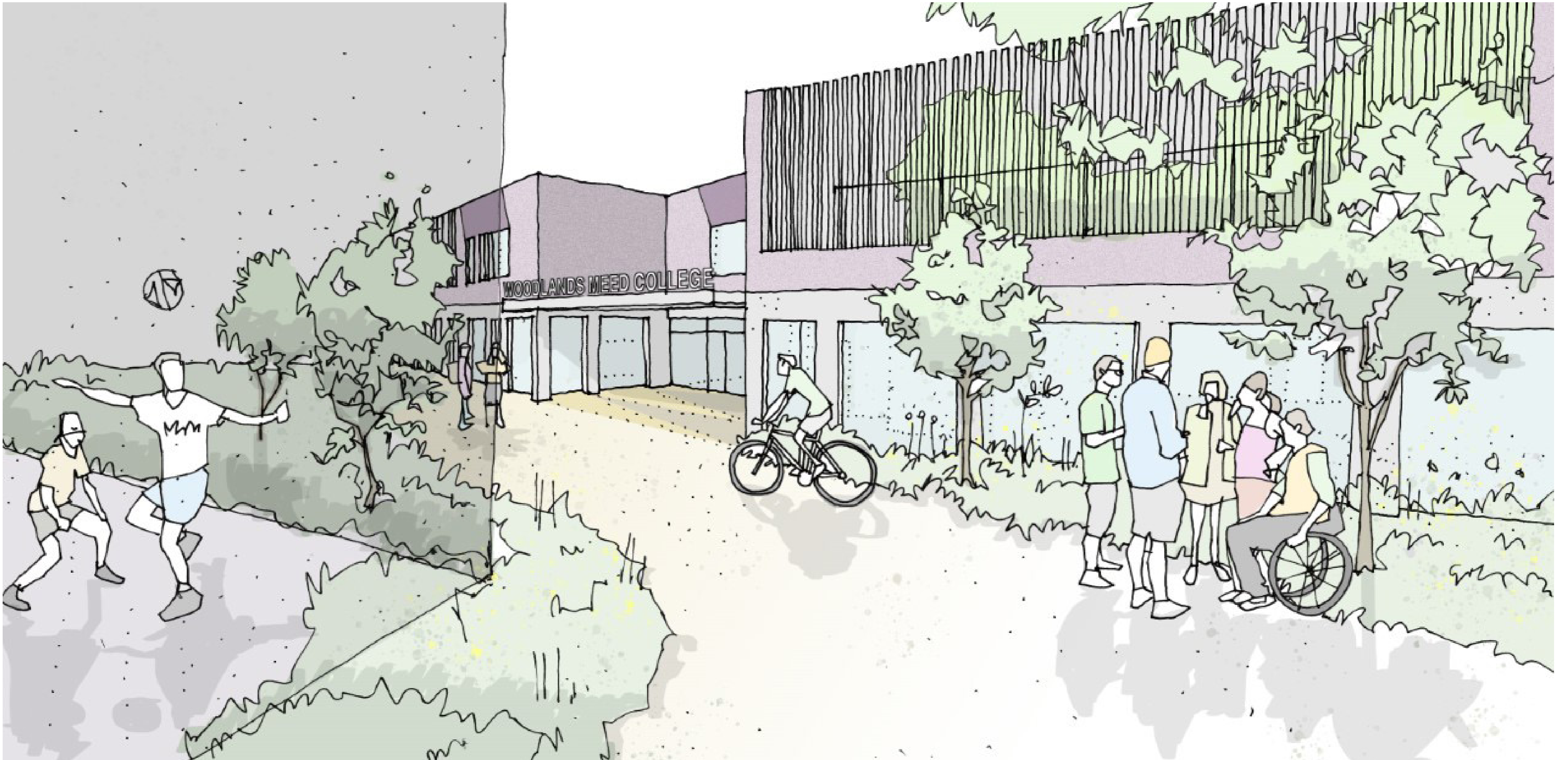


West Elevation

Key:

- 01 PPC aluminium slats with associated bracketry & PPC supporting steel behind (RAL TBC)
- 02a Brick (stretcher bond)
- 02b Brick splicing reveal (varied bond)
- 03a PPC aluminium framed windows (fixed) (RAL TBC)
- 03b PPC aluminium framed windows (openable) (RAL TBC)
- 04 PPC aluminium framed louvre (opening glazed window at L/L & NVHR ventilation unit at H/L behind) (RAL TBC)
- 05 PPC aluminium framed full height glazing (curtain walling integrated with PPC louvers and opening vents as required) (RAL TBC)
- 06 PCC colonnade
- 07 PCC panels
- 08 PPC roof coping (RAL TBC)
- 09 PPC Aluminium lettering spelling 'WOODLANDS MEED' with concealed PPC steel supporting structure
- 10 Polycarbonate canopy with associated cantilevered supporting PPC steel frame
- 11 Kitchen flues to MEng design
- 12 PPC Aluminium framed sliding door to entrance (RAL TBC)
- 13 PPC aluminium solid panelled door (RAL TBC)
- 14 PC aluminium louvered door with louvered overhead panel to plant rooms (RAL TBC)
- 15 PC aluminium louvers (RAL TBC)
- 16 Concealed RWP throughout the building
- 17 PPC steel fence to external service yard (RAL TBC)





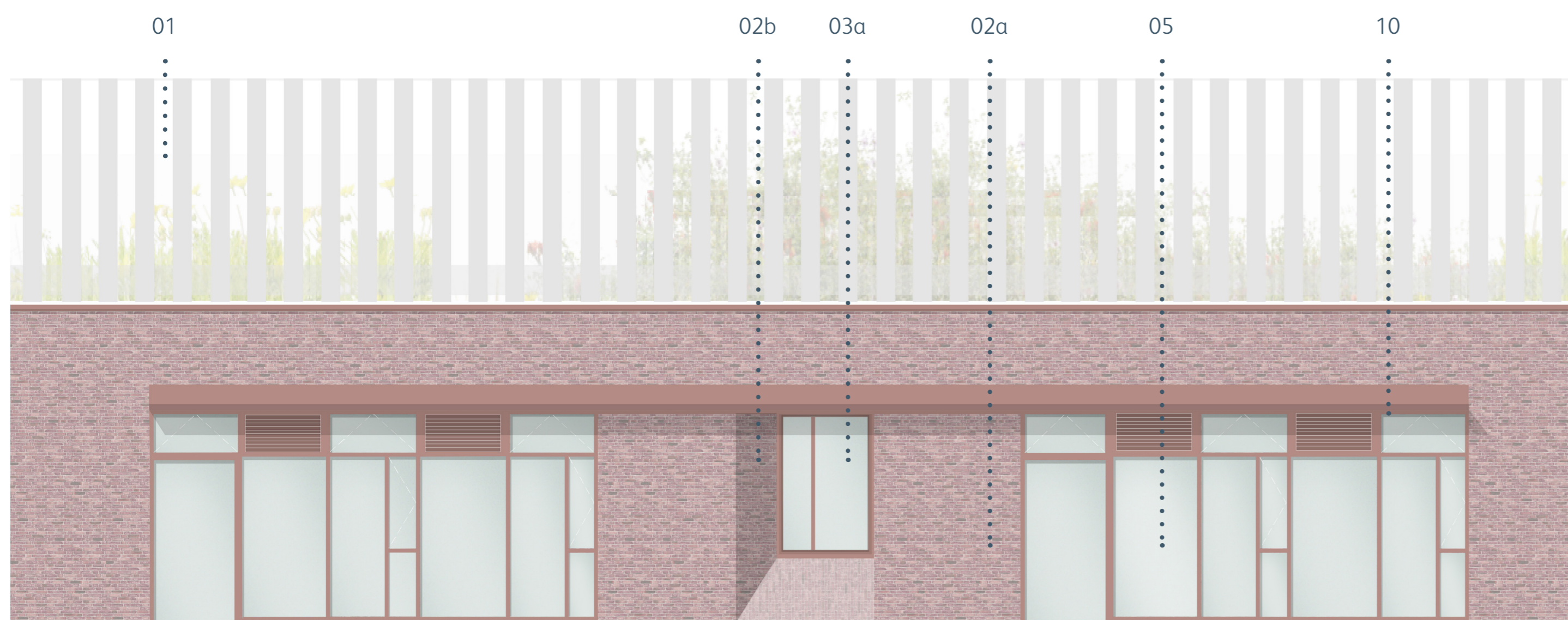
Entrance view



Entrance - East Elevation

External Terrace - East Elevation

- Key:**
- 01 PPC aluminium slats with associated bracketry & PPC supporting steel behind (RAL TBC)
 - 02a Brick (stretcher bond)
 - 02b Brick splaying reveal (varied bond)
 - 03a PPC aluminium framed windows (fixed) (RAL TBC)
 - 03b PPC aluminium framed windows (openable) (RAL TBC)
 - 04 PPC aluminium framed louvre (opening glazed window at L/L & NVHR ventilation unit at H/L behind) (RAL TBC)
 - 05 PPC aluminium framed full height glazing (curtain walling integrated with PPC louvers and opening vents as required) (RAL TBC)
 - 06 PCC colonnade
 - 07 PCC panels
 - 08 PPC roof coping (RAL TBC)
 - 09 PPC Aluminium lettering spelling 'WOODLANDS MEED' with concealed PPC steel supporting structure
 - 10 Polycarbonate canopy with associated cantilevered supporting PPC steel frame
 - 11 Kitchen flues to MEng design
 - 12 PPC Aluminium framed sliding door to entrance (RAL TBC)
 - 13 PPC aluminium solid panelled door (RAL TBC)
 - 14 PC aluminium louvered door with louvered overhead panel to plant rooms (RAL TBC)
 - 15 PC aluminium louvers (RAL TBC)
 - 16 Concealed RWP throughout the building
 - 17 PPC steel fence to external service yard (RAL TBC)



Courtyard - South Elevation

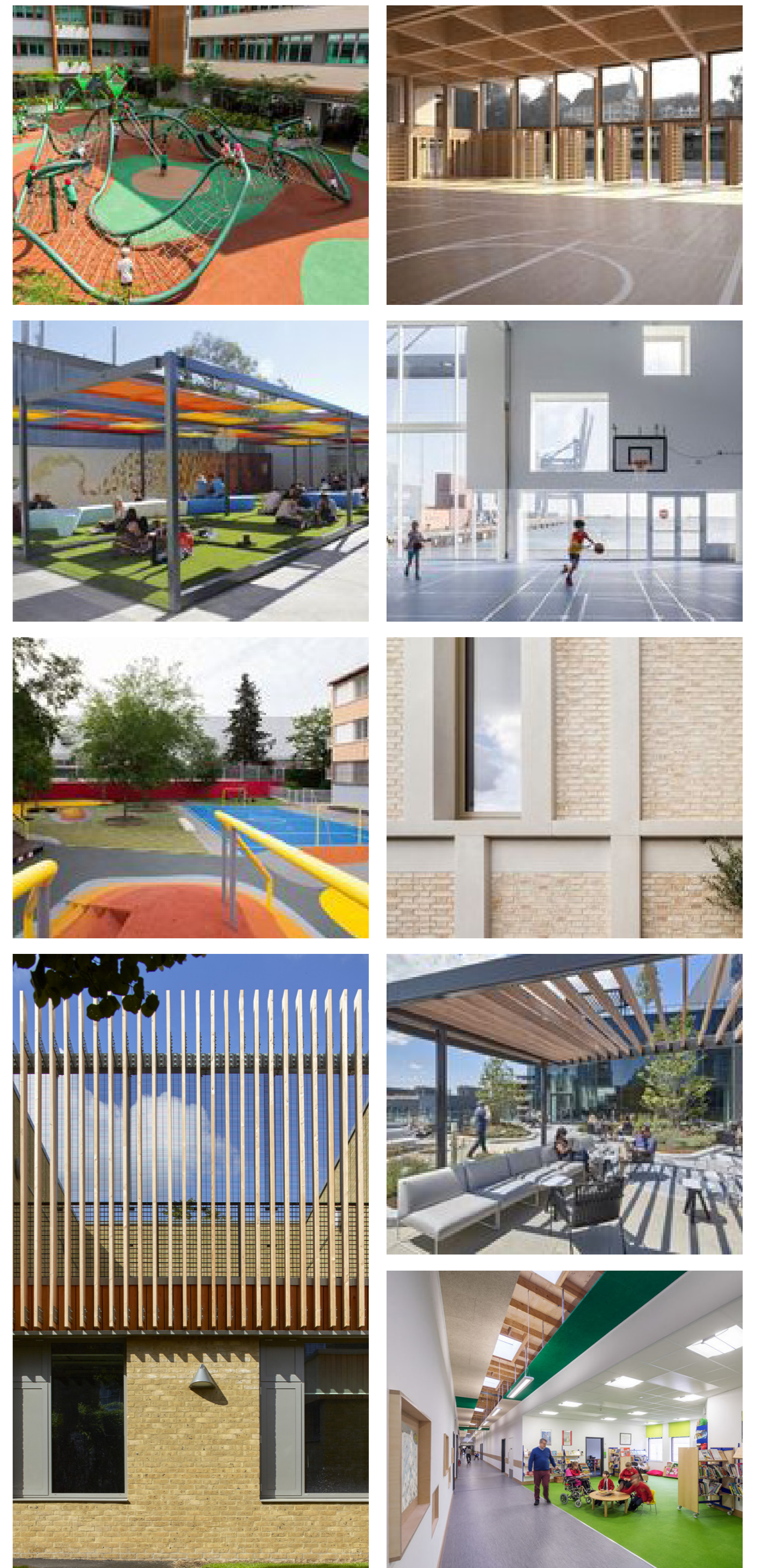




Courtyard View



Roof Plan



DO NOT SCALE

Key:

	Planting		Bins
	Amenity grass		Hedge / fence to edge of classroom
	Asphalt		Proposed trees
	Paving		Existing trees
	Building		Amphitheatre / steps
	Polymeric sports surface		Performance deck
	Rubber crumb safety surface		Feature seating
	Veg planters and polytunnel		Canopy
	Single / double gate		Trees removed

Landscape Masterplan

The external strategy aims to create a series of cohesive, vibrant and high quality exterior spaces for the SEN students.

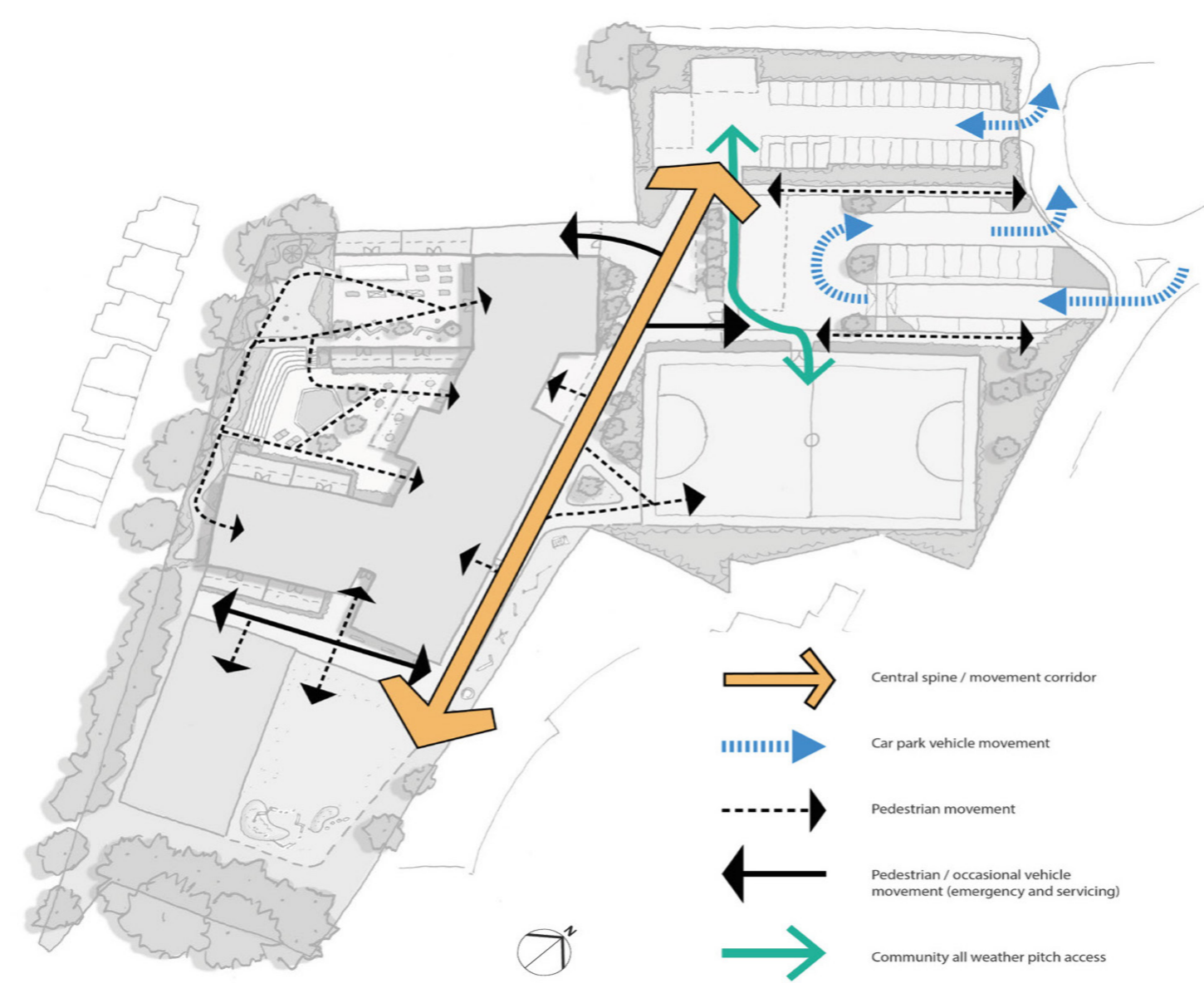
The car parking areas have been positioned for ease of access from the road network, and lead to a green and welcoming entrance plaza. Areas for sports and physical activity are located around the outer edge of the new building to the east and south, while spaces for learning and socialising are primarily located within the inner courtyard and terrace spaces to the west.

The steep topography of the site has been rationalised to create an accessible, usable and comfortable external environment. Careful detailed design will ensure that all spaces will be compliant with the Equality Act, and thus will be suitable for all users.

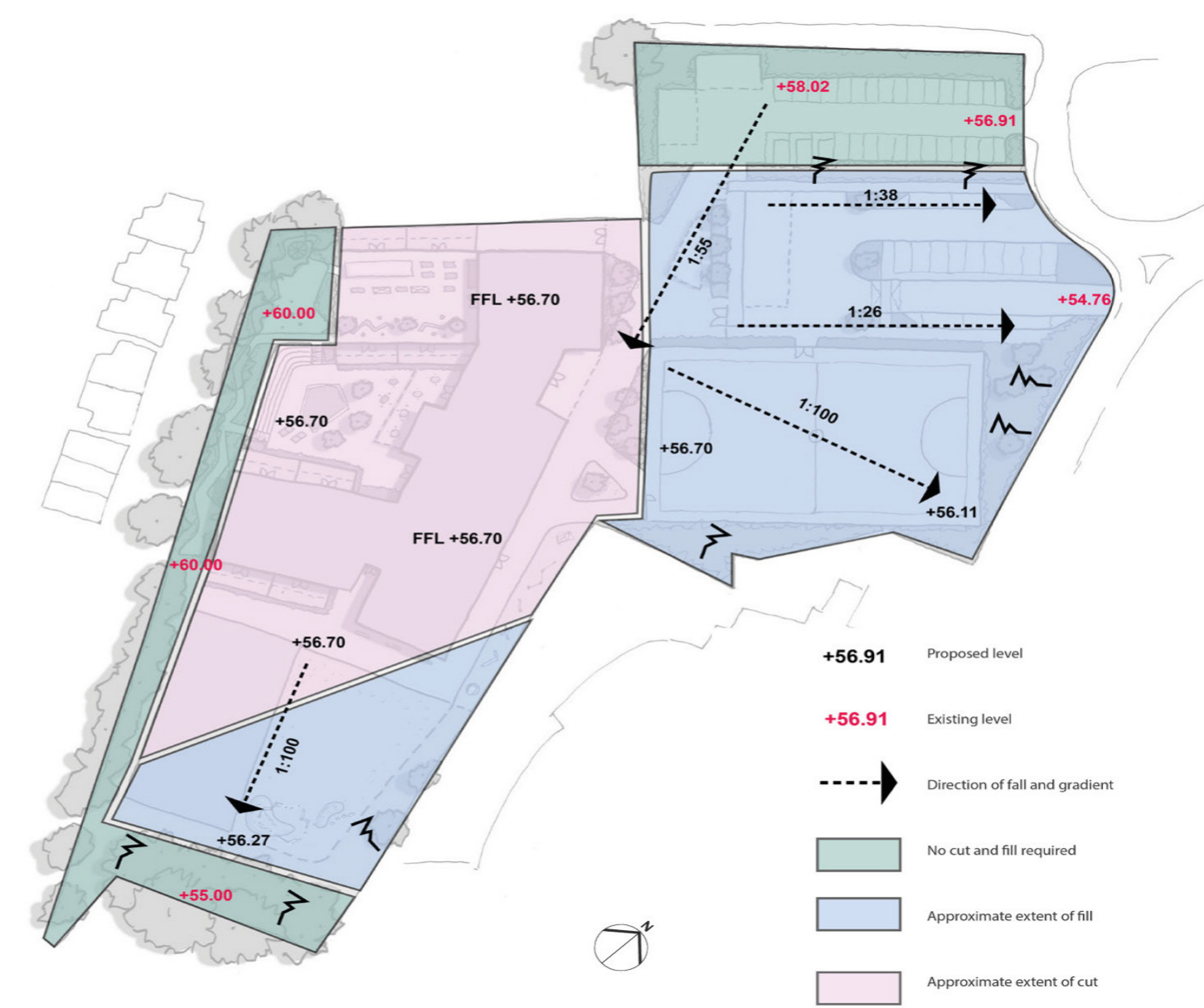
The scheme will use a contemporary and high quality palette of materials for both surfacing and furniture to ensure the external environment visually connects to the school, whilst being age appropriate and safe. The planting palette will also contribute to the overall identity of the school, providing wildlife and educational benefits wherever possible.



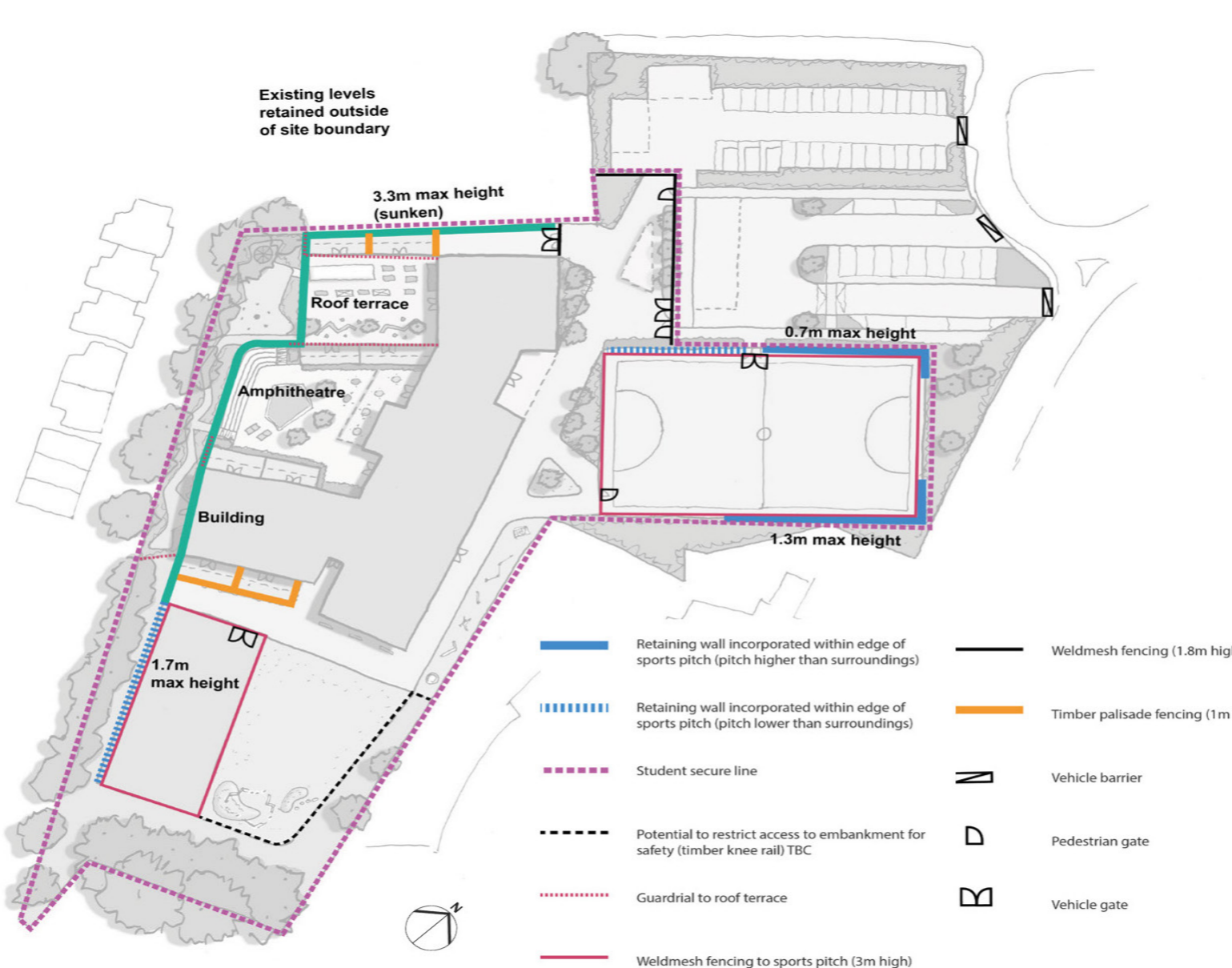
Landscape masterplan



Movement and circulation



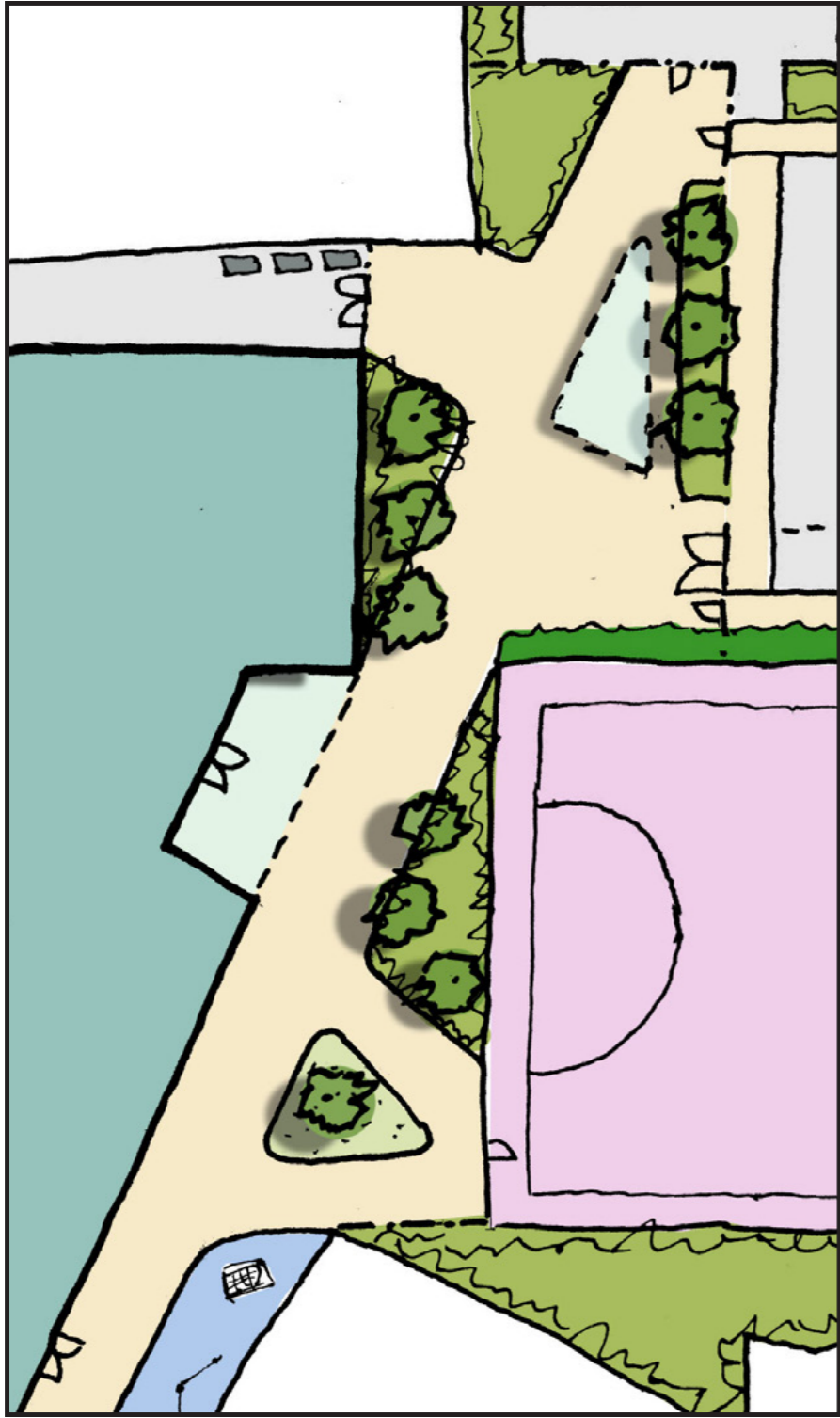
Levels and cut and fill



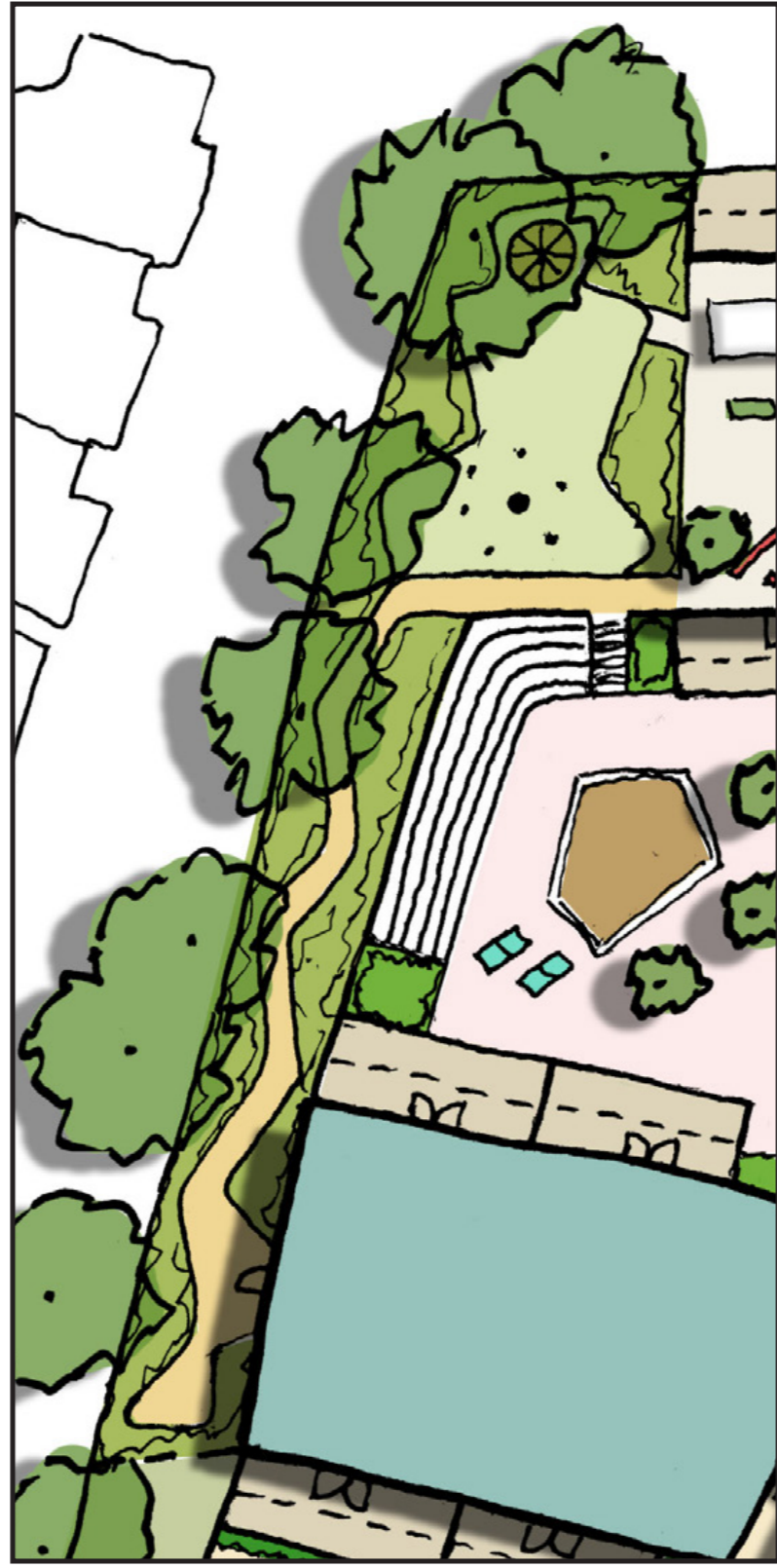
Boundaries, fencing and walls



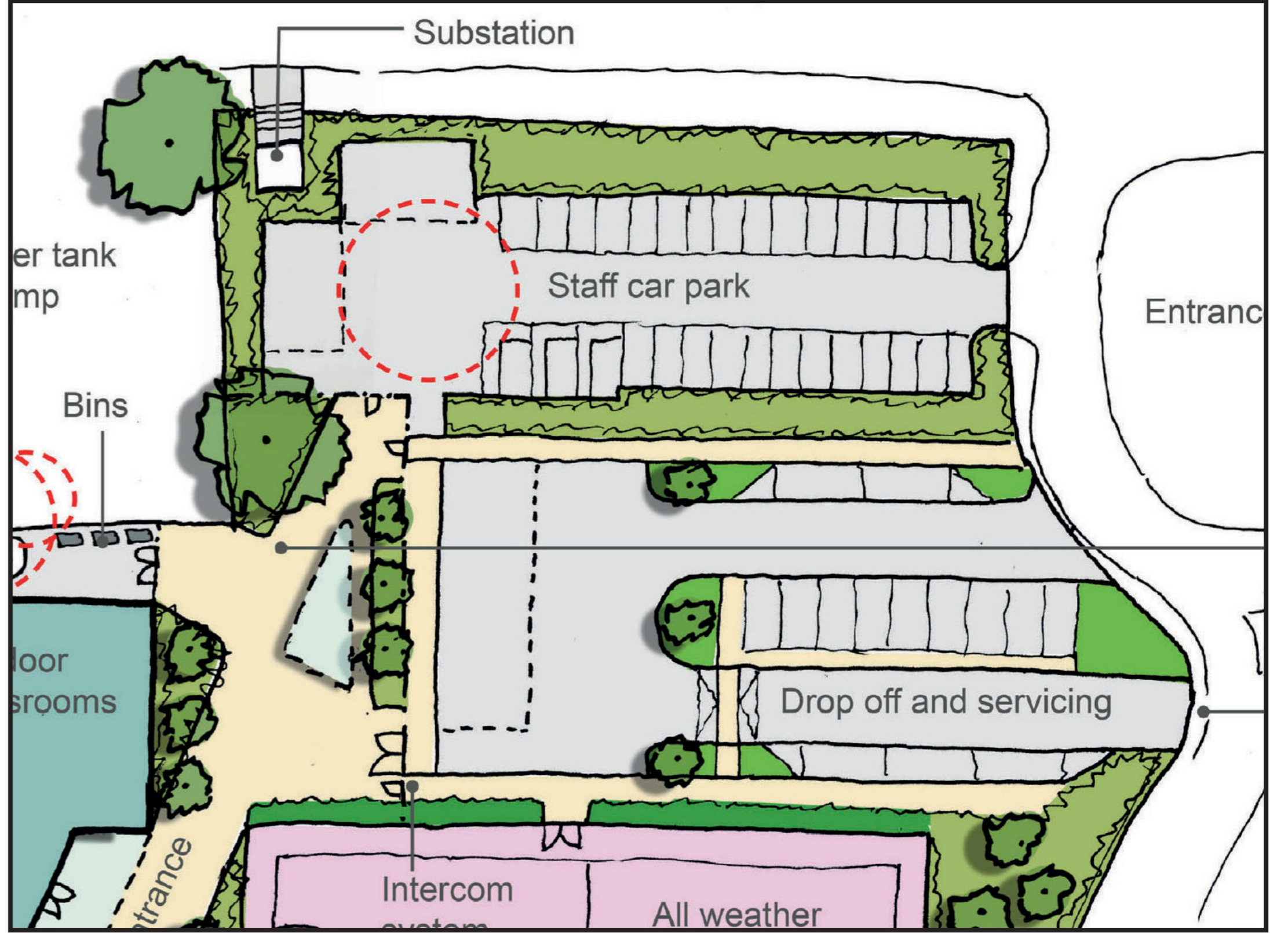
Character areas



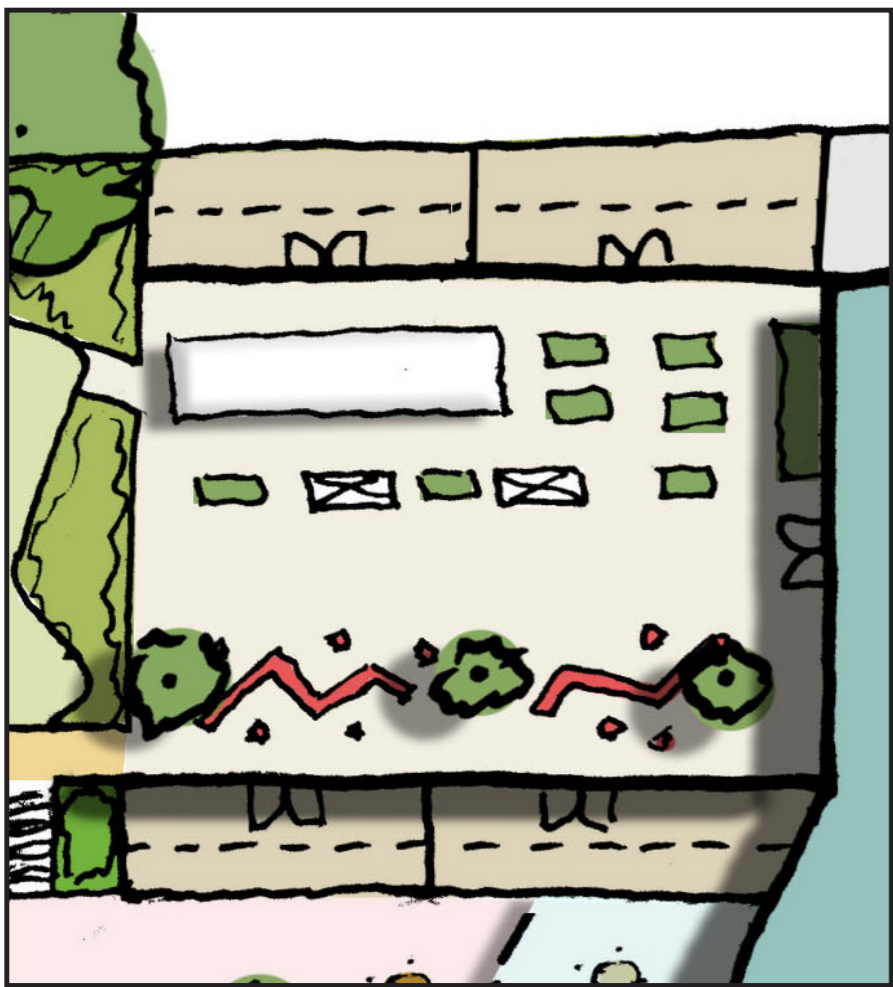
Entrance plaza layout



Sensory nature trail and wild garden layout



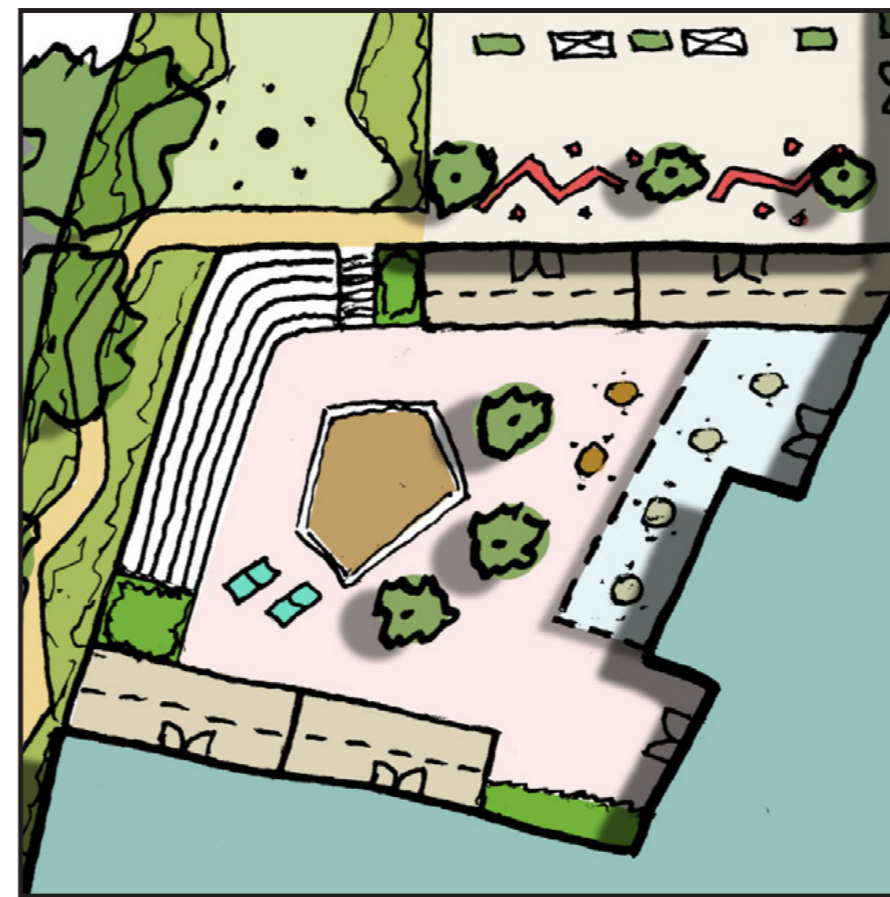
Car park, drop off and servicing layout



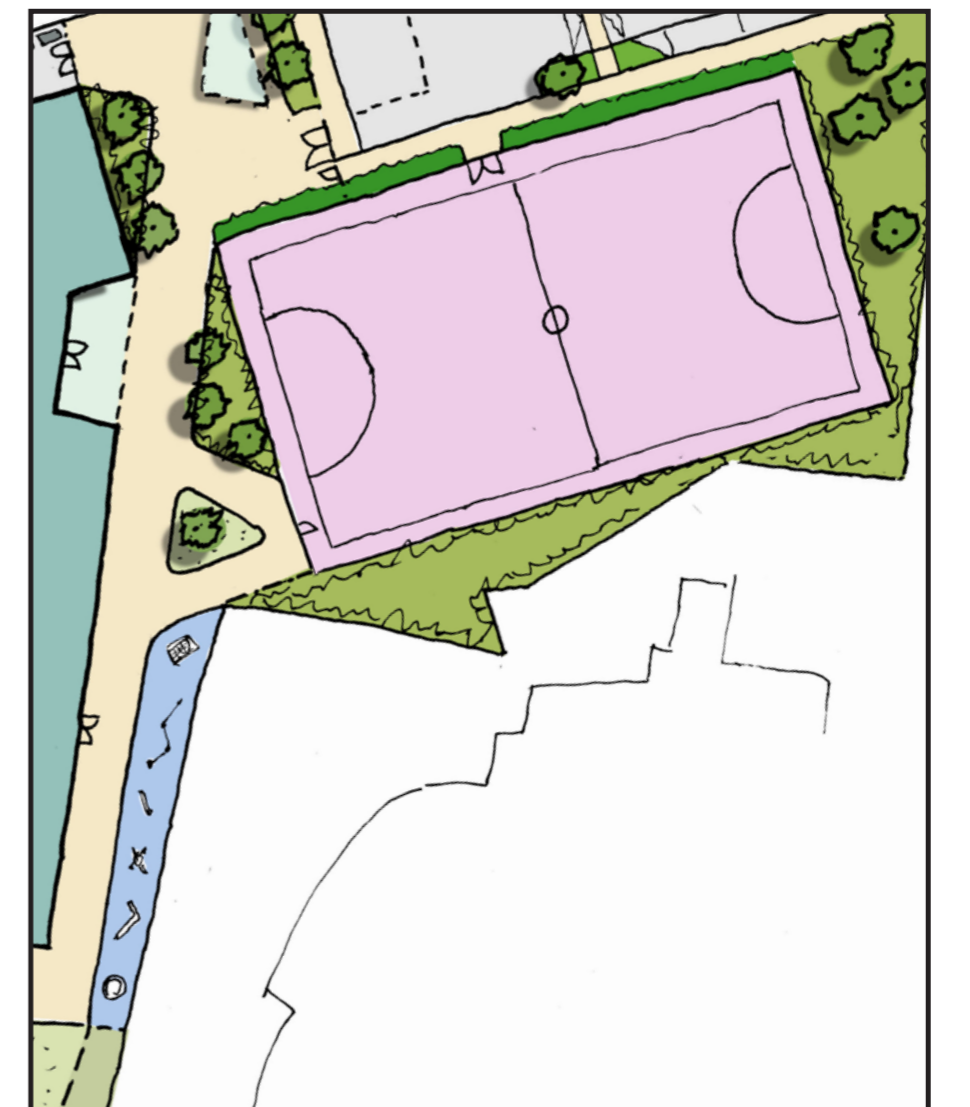
Central courtyard layout



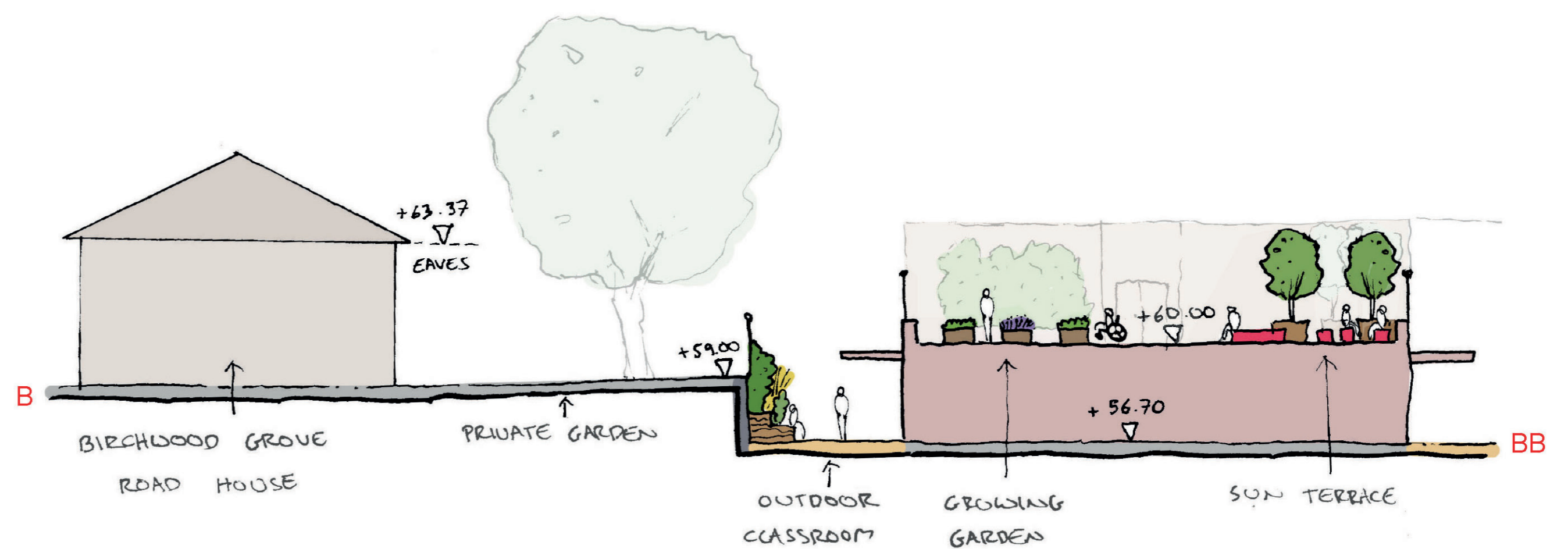
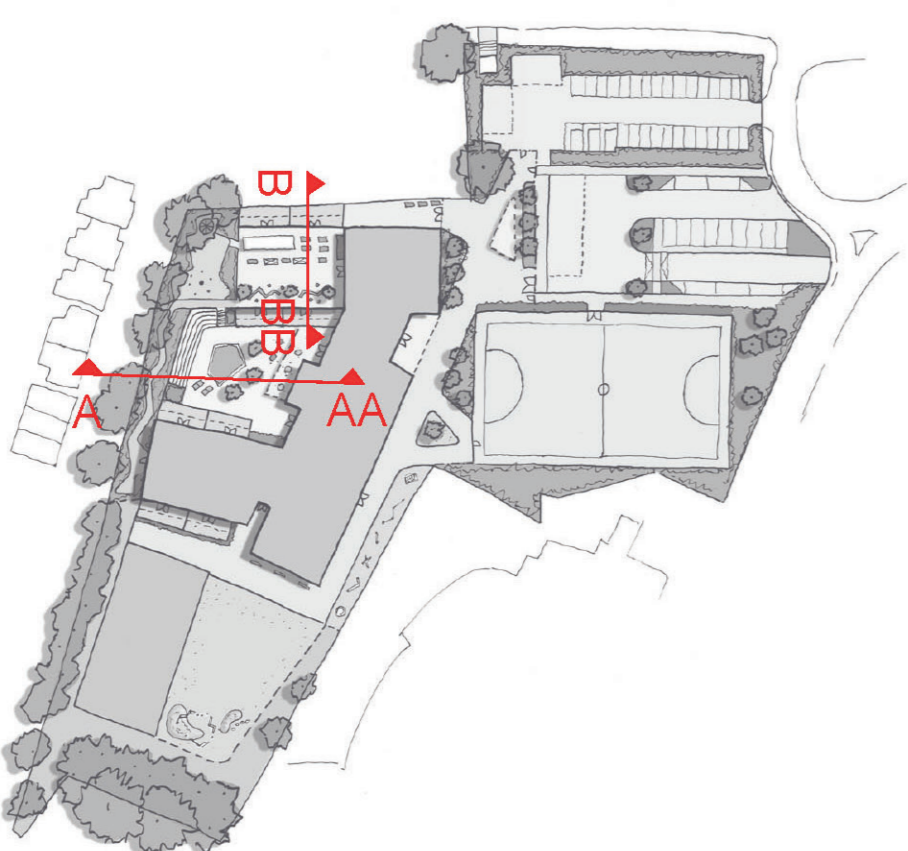
Active zone layout



Central courtyard layout



Sports and fitness zone layout



Landscape site sections