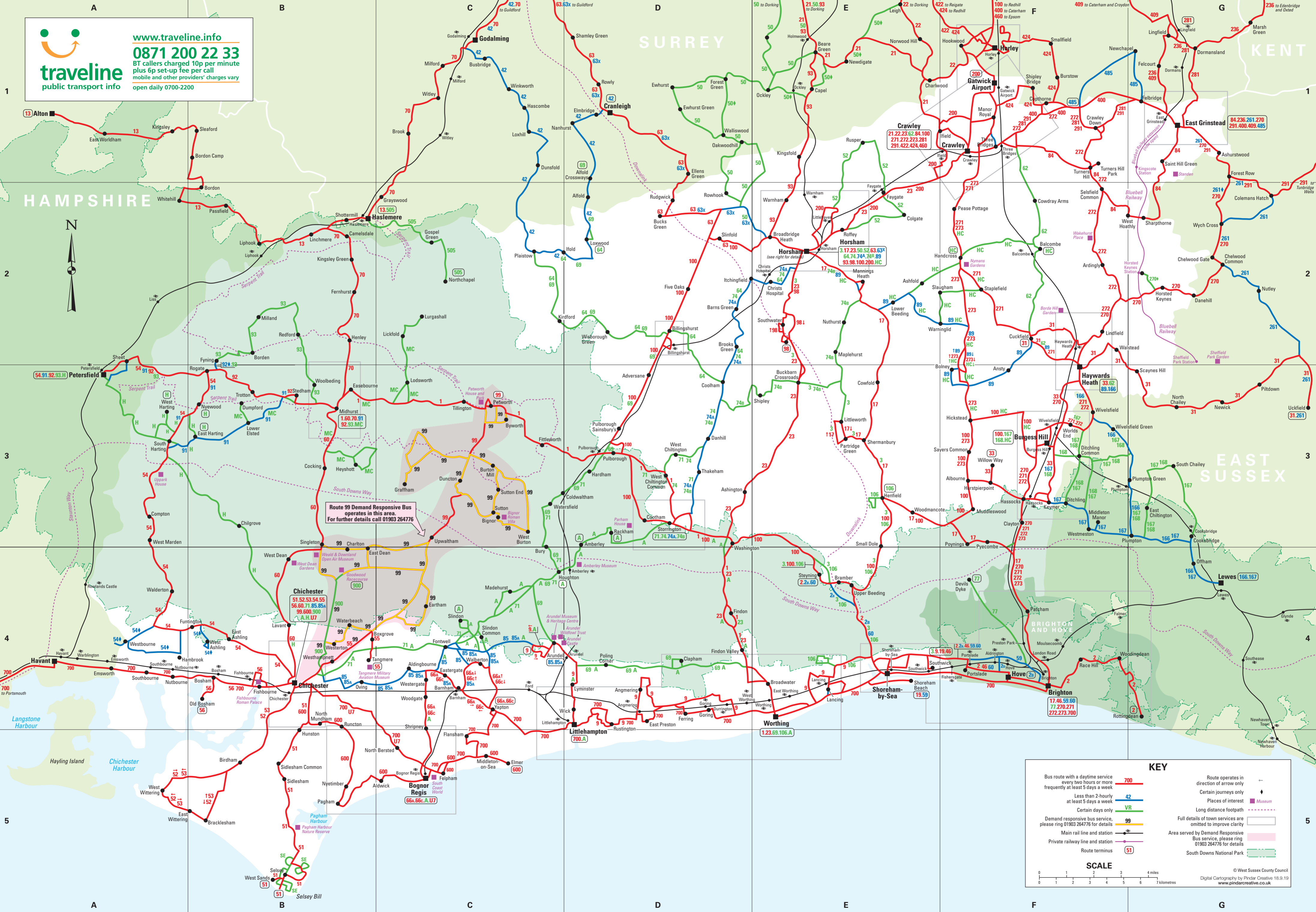


traveline
public transport info

www.traveline.info
0871 200 22 33
BT callers charged 10p per minute plus 6p set-up fee per call
mobile and other providers' charges vary
open daily 0700-2200



Route 99 Demand Responsive Bus operates in this area. For further details call 01903 264776

Chichester
51.52.53.54.55
56.60.71.85.85A
99.600.900
A.H.U7

Horsham
3.17.23.50.52.63.63x
64.74.74A.74B.89
93.98.100.200.HC

Crawley
21.22.23.62.84.100
271.272.273.281
291.422.424.460

Haywards Heath
33.62
89.166

Brighton
17.46.59.60
77.270.271
272.273.700

KEY

- Bus route with a daytime service every two hours or more frequently at least 5 days a week: **700**
- Less than 2-hourly at least 5 days a week: **42**
- Certain days only: **VR**
- Demand responsive bus service, please ring 01903 264776 for details: **99**
- Main rail line and station:
- Private railway line and station:
- Route terminus: **51**
- Route operates in direction of arrow only:
- Certain journeys only:
- Places of interest:
- Museum:
- Long distance footpath:
- Full details of town services are omitted to improve clarity:
- Area served by Demand Responsive Bus service, please ring 01903 264776 for details:
- South Downs National Park:

SCALE

0 1 2 3 4 5 6 miles
0 1 2 3 4 5 6 kilometres

© West Sussex County Council
Digital Cartography by Pindar Creative 18.9.19
www.pindarcreative.co.uk