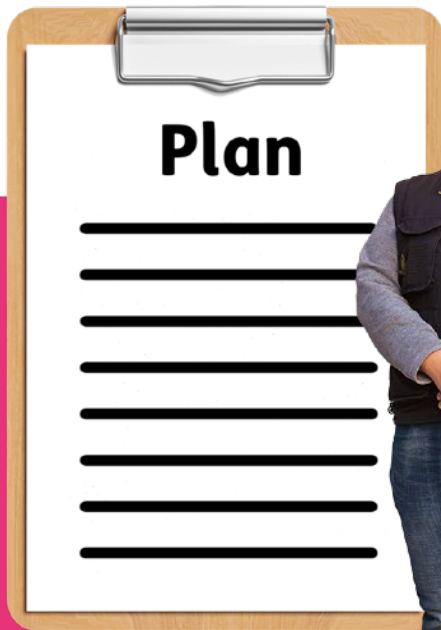


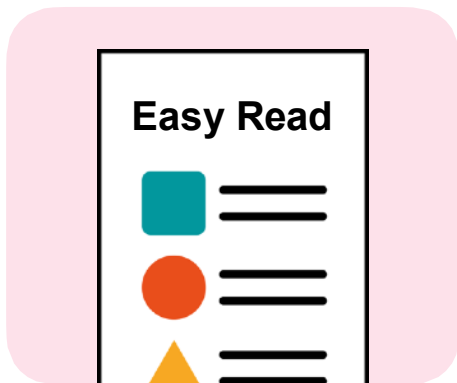


Easy
Read

Our plan for adult social care



Easy Read

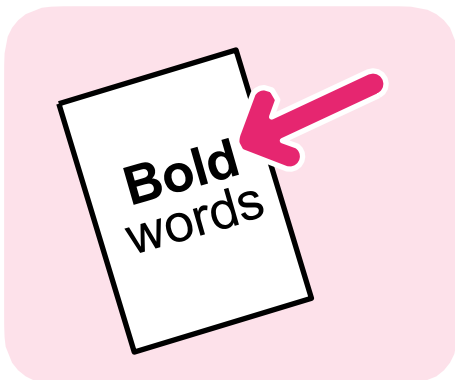


This is an Easy Read version of some information.

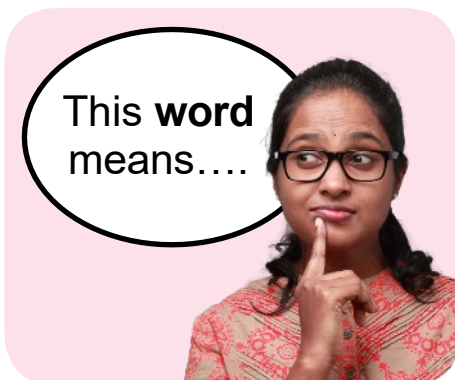
It uses easier words and pictures.



Some people may still want help to read it.



Some words are **bold** to show they are important.



We explain bold words if they are hard to understand.

What is in this booklet

About this booklet	4
Why we need a plan	5
Our vision	7
Our principles	8
Our priorities	10
Making the plan happen	17
Checking the plan is working	19
Find out more	20
How to contact us	21



What do you think about this Easy Read booklet?

Please fill in this [survey](#) to tell us what you think.

About this booklet



We are West Sussex County Council.

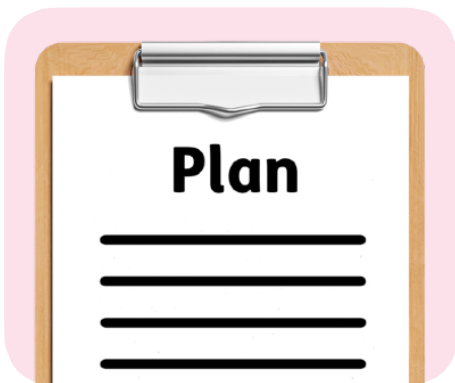
We provide **social care** for adults in West Sussex.



Social care is the extra support some people need to live their lives, like support with eating or washing.



The booklet will tell you about our plan to support people, their families and carers.



The plan is called the Adult Social Care Strategy for West Sussex

Why we need a plan

We need a plan because we know that:



- Councils and social care services do not have a lot of money.



- We have less money to spend on adult social care.



- More people need social care, and even more people will need social care in the future.

We also need a plan because we know that:



- More people have more than one long-term health condition.



- We need to work with other councils in the area, who are also supporting more people who need social care.

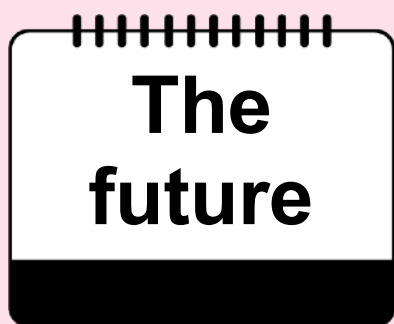


As costs go up, we cannot do everything, so we need to do what we can to make the biggest difference to people, and still do everything the law says we must.



We have talked to our staff, other organisations, and people who get support to make sure we include the right things in our plan.

Our vision



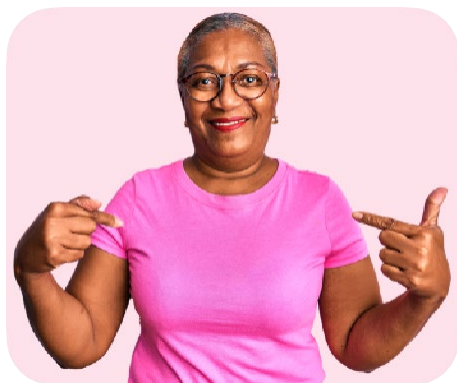
Our **vision** is how we want things to be in the future.



We want people in West Sussex to be healthy and independent as much as they can.



We will help people to get the right social care when they need it.



We will give support that can change to help people feel better and do more on their own and stop things from getting worse.

Our principles



Our **principles** are the way we do our work.



We have 5 principles that help us to make decisions about how to improve social care:



1. We spend our money carefully.



2. We keep people safe from harm.



3. We support people to be independent and make their own decisions.



4. We work with other organisations that provide care and support, like the NHS and other councils.



5. We want everyone to have a fair chance to have a good life and get the support they need.

Our priorities



Priorities are the most important things that should be done first.



Our plan has 4 priorities. In this section we will tell you about each priority and what we will do to make it happen.

Priority 1

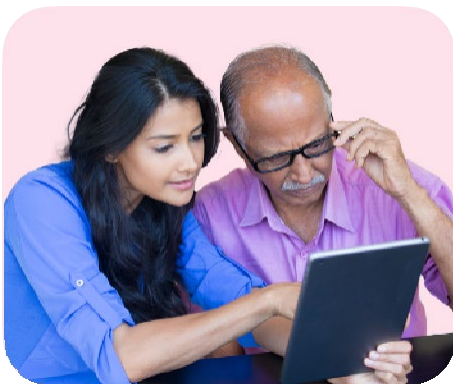


Priority 1 is for everyone to be part of making decisions about their own life.

To make priority 1 happen we will:



- Give good information as quickly as possible, to help people make decisions about their social care.



- Support social care staff to help the people they work with make decisions about their care.



- Help people manage their own social care if they want to, like getting money from the government called **direct payments**.



- Make sure young people are ready to become adults, and their carers are ready to support them.



- Support the plan for people with **autism** in West Sussex, called the All Age Autism Strategy.

Autism affects things like communication, being with other people, or how you think and feel about things.

Priority 2



Priority 2 is to support people to have good support and relationships in their local area, which is good for their **wellbeing**.

Wellbeing means feeling happy and healthy in your body and mind.

To make priority 2 happen we will:



- Work with other care organisations to find people who are caring for others and support them.



- Help local groups to support people and help them to be part of the local community.



- Help people to feel less lonely.



- Plan social care services together with people with the people who use them.

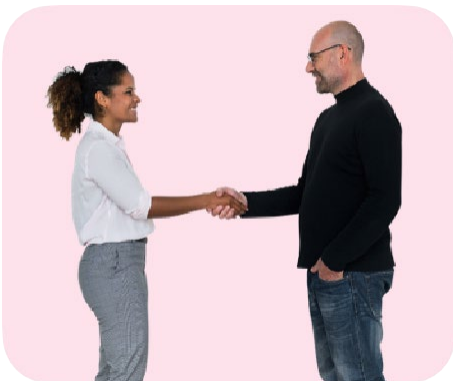
Priority 3



Priority 3 is getting people the right help at the right time.



This will help people and carers stay well, safe and independent.



To make priority 3 happen we will:

- Work with other organisations and council teams to keep people well and safe.



- Support people who are leaving hospital to help them be independent again.

To make priority 3 happen we will also:



- Make sure different organisations work together better to support people with mental health problems and other needs.



- Work with other care organisations to support people at the end of their lives.

Priority 4



Priority 4 is making sure people have a home where they feel safe and comfortable.



This might be their own home, or a care home.

To make priority 4 happen we will:



- Give people the help they need to stay independent at home.



- Work with housing organisations to make sure people have good choices for homes and support.



- Work with care organisations to make sure there are good care homes for people to live in.



- Look at our own care homes to make sure they are still right for people's needs in the future.

Making the plan happen



There are 4 areas that will help us make the plan happen:

1. Staff



We want to encourage more people to work in adult social care and help them to do their jobs well.

2. Keeping services strong



We help make sure that all care services in the area are strong and keep going for a long time and give people the help they need.

3. Technology



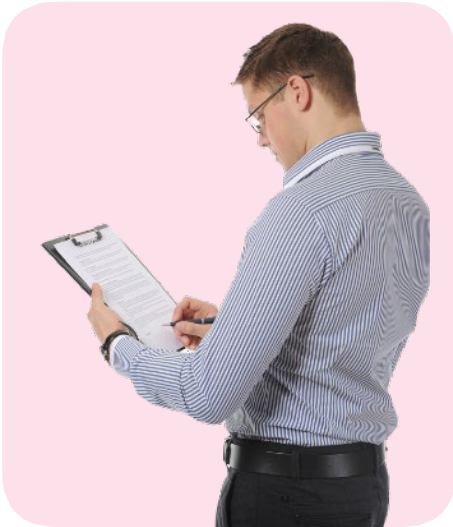
We want to use new technology to make social care services better and easier to use.

4. Information



We want to collect better information about the work we do, to help us learn and improve in the future.

Checking the plan is working



We will check the plan is working by looking at the differences our 4 priorities are making to people's lives.

Remember, priorities are the most important things that should be done first.



We will work with our involvement groups and other organisations to check the plan is working.



We will make sure we can do our work with the money and staff we have.



Council leaders will also check how the plan is going.

Find out more



You can see the full plan on our website [here](#).

How to contact us

You can contact us by:

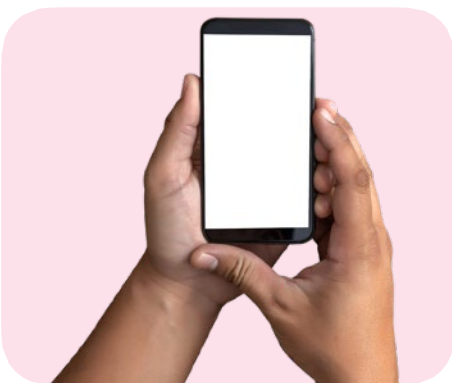


- Filling in the online 'Contact us' form here:

www.westsussex.gov.uk/contact-help



- Post:
County Hall
Chichester
West Sussex
PO19 1RQ



- Phone: 01243 642 121, or
- Textphone using Relay UK:
18001 01243 642 121

This Easy Read booklet was produced by easy-read-online.co.uk
The booklet includes images licensed from Shutterstock.