

Employment Trends in Crawley District

Business Register and Employment Survey (BRES) Analysis
Headline Data Summary 2016

Source

The Business Register and Employment Survey (BRES) is the official source of employee and employment estimates by detailed geography and industry. The Survey collects employment information from businesses across the whole of the UK economy excluding farm agriculture, nor does it include self-employed who are not registered for VAT or PAYE schemes. The data is available from Nomis¹. There have been changes to the BRES coverage in 2016 to include solely Pay As You Earn (PAYE) based businesses, ONS have revised the 2015 data in order to be consistent with the latest release, so this report is based on the 2015 and 2016 data only.

Employment in 2016

- There were a total of 92,800 employee jobs in Crawley borough in 2016, Crawley has the highest number of jobs in West Sussex, making up 25% of the total.
- 84,600 (91.2%) of these employee jobs are in the private sector, Crawley has much higher proportions of private sector employee jobs compared to both West Sussex (86.4%) and England (83.0%).
- The remaining 8,200 (8.8%) of employee jobs were in the public sector, Crawley has lower proportions of public sector employee jobs compared to both West Sussex (13.6%) and England (17.0%).
- 64,330 (69.3%) were employed full time, over two-thirds of the local employee jobs in Crawley. These figures are above the county and national trends, West Sussex (65.7%) and England (68.1%). The reverse applies to part time employee jobs; 28,470 (30.7%) employee jobs in Crawley, below the county and national trends, West Sussex (34.3%) and England (31.9%).

Employment Change 2015-2016

- Employment growth is high in Crawley over the year 2015 to 2016 with 8,060 (9.52%) more employee jobs in Crawley in 2016 compared to 2015. This is 2½ times higher than the county average (3.91%) and higher than the national average (1.94%).
- The number of private and public sector employee jobs both increased by 7,630 (9.92%) and 430 (5.53%) respectively. The private sector change is almost 3 times higher than the county (3.53%) rates and much higher than the national rates (2.27%). The public sector change is below the county rates (6.35%) but much higher than the national rates (0.34%).
- Full time employee jobs increased by 4,380 (7.31%) in Crawley. This is 2½ times higher than the county average (2.84%) and higher than the national average (0.63%).
- Part time employee jobs increased by 3,680 (14.85%) in Crawley. This is 2½ times higher than the county average (6.01%) and higher than the national average (4.83%).

Change 2015-2016 Compared to the South East Region's Local Authorities

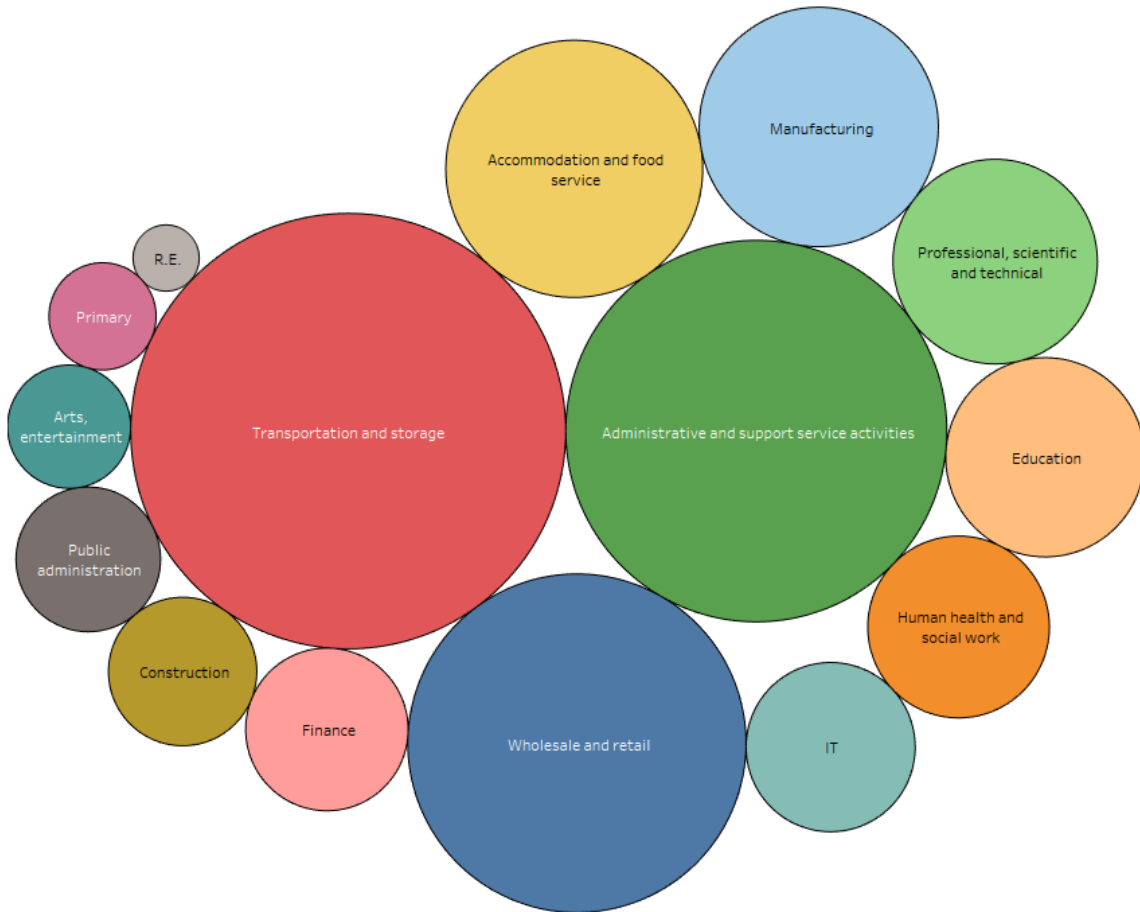
There are 67 district and borough areas in the South East region. By ranking these, with 1 indicating the highest level of growth and 67 indicating the lowest, we can measure the growth comparatively. The figures are calculated as a percentage difference between the 2015 and 2016 data. It is evident that Crawley has seen some of the highest growth levels in the South East. Crawley is the 8th largest in terms of total size in the South East.

- 1** Crawley is ranked 1st out of the 67 district and borough councils in the South East Region for **employment growth** between 2015 and 2016.
- 1** Crawley is ranked 1st for **full time** employee change from 2015 to 2016.
- 4** Crawley is ranked 4th for **part time** employee change from 2015 to 2016.
- 1** Crawley is ranked 1st for **private** sector employee change from 2015 to 2016.
- 7** Crawley is ranked 7th for **public** sector employee change.

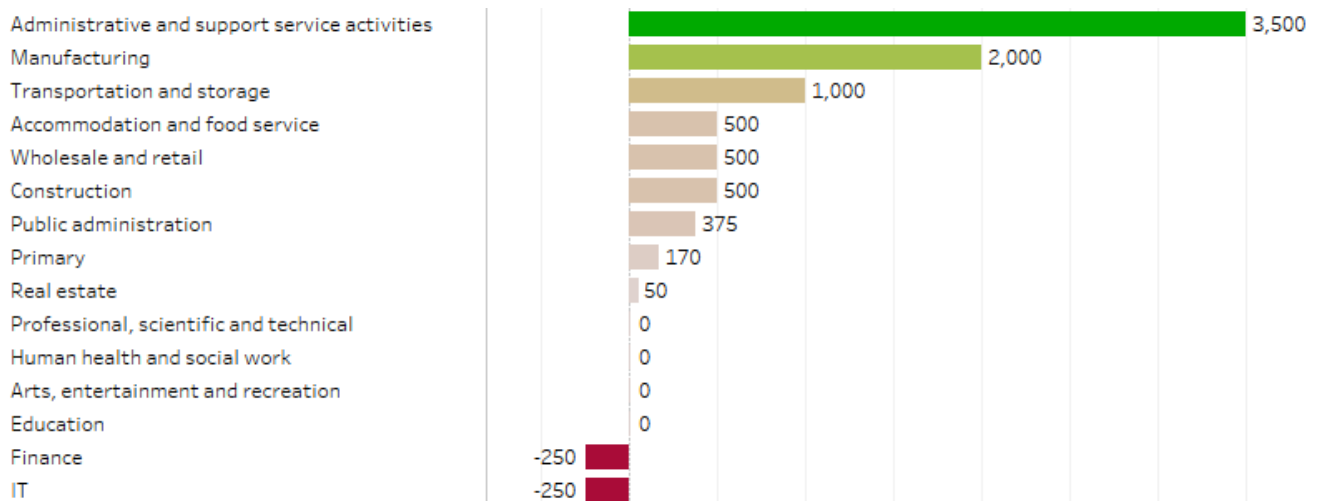
¹ The figures in this section are from the BRES public private open data source on Nomis <https://www.nomisweb.co.uk/>

Employment Sectors²

The below packed circles diagram shows the individual sectors as a proportion of the employee jobs in Crawley, the most employee jobs are in the transportation and storage sector and the real estate sector has the fewest.



- Three main sectors in Crawley account for over half (54.8%) of employee jobs, these are in transportation and storage (23.1%), the wholesale and retail trade including repair of motor vehicles and motorcycles (17.7%) and administrative and support service activities (14.0%).
- The employee change per sector from 2015 to 2016 is shown in the table below, green highlighting an increase and red a decrease.



² The figures in this section (industry related) are from the BRES open data source on Nomis <https://www.nomisweb.co.uk/>

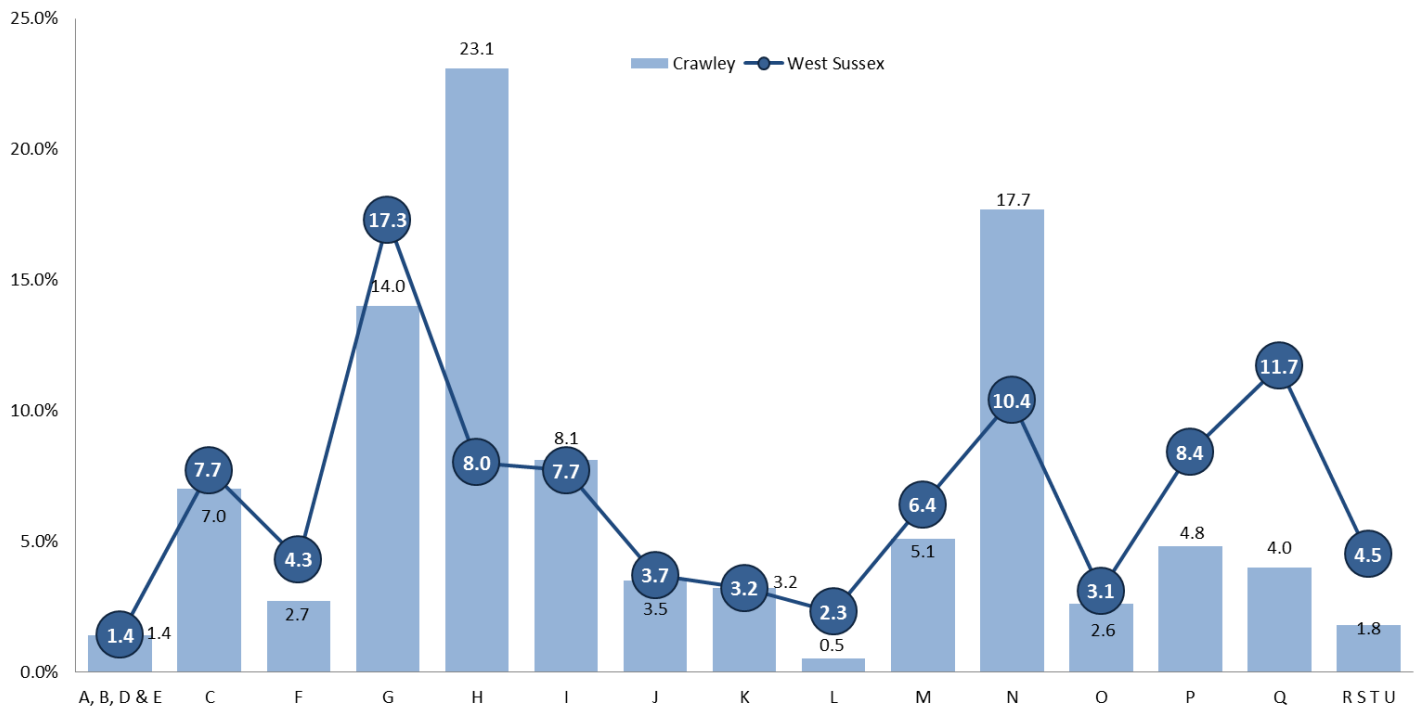
Percentage of Employees in Employment by Sector 2016

The table below shows the percentage of employee jobs by sector for Crawley, West Sussex, South East and England. The sectors highlighted are the top five in those areas. As can be seen from the table, transport and storage is the key sector within Crawley compared to the South East and England. Accommodation and food services and administrative and support service activities are also higher than the national and regional trends.

Industry	Crawley	West Sussex	South East	England
A, B, D & E : Primary and Utilities	1.4%	1.4%	1.9%	1.8%
C : Manufacturing	7.0%	7.7%	6.3%	8.0%
F : Construction	2.7%	4.3%	4.9%	4.5%
G : Wholesale and retail trade; repair of motor vehicles and motorcycles	14.0%	17.3%	16.2%	15.3%
H : Transportation and storage	23.1%	8.0%	5.0%	5.0%
I : Accommodation and food service activities	8.1%	7.7%	6.8%	7.3%
J : Information and communication	3.5%	3.7%	6.1%	4.4%
K : Financial and insurance activities	3.2%	3.2%	2.8%	3.6%
L : Real estate activities	0.5%	2.3%	1.9%	1.7%
M : Professional, scientific and technical activities	5.1%	6.4%	8.8%	9.0%
N : Administrative and support service activities	17.7%	10.4%	9.1%	9.2%
O : Public administration and defence; compulsory social security	2.6%	3.1%	3.1%	4.0%
P : Education	4.8%	8.4%	10.1%	9.0%
Q : Human health and social work activities	4.0%	11.7%	12.0%	12.8%
R S T U: Arts, entertainment, recreation and other services	1.8%	4.5%	4.8%	4.6%

Crawley compared to West Sussex by industry

The table below shows how the percentages of employee jobs by industry in Crawley compare with the county average.



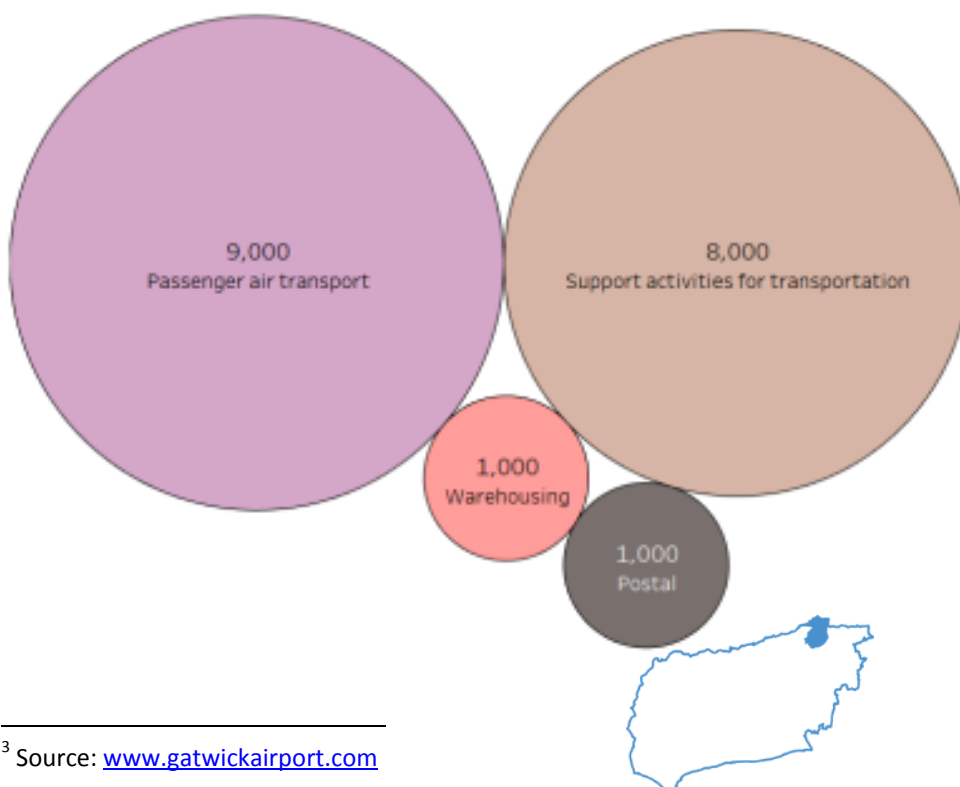
The transportation and storage sector (H) in Crawley is 3 times higher than the county proportions and the administrative and support service sector (N) are also higher than the county averages while the human health and social work activities sector (Q) are roughly 1/3rd of the proportion of West Sussex.

Sector strengths and weaknesses (location quotients)

It is useful to understand local economic strengths by comparing the distribution of employment by sector in local authority areas with the national distribution. This is performed by using Location Quotients (LQ). Any LQ above 1.0 shows a local concentration and any below 1.0 shows an under representation.

LQ/Sector	Adur	Arun	Chichester	Crawley	Horsham	Mid Sussex	Worthing	West Sussex	South East
A, B, D & E : Primary and Utilities	0.6	0.4	0.3	0.8	0.6	0.5	1.9	0.8	1.3
C : Manufacturing	1.6	1.0	1.2	0.9	0.9	0.8	1.0	1.0	1.0
F : Construction	1.4	1.1	0.9	0.6	1.3	1.1	0.7	1.0	1.0
G : Wholesale and retail trade	1.2	1.2	1.0	0.9	1.3	1.3	1.1	1.1	0.9
H : Transportation and storage	0.4	0.8	0.5	4.6	0.6	0.6	0.5	1.6	0.6
I : Accommodation and food service activities	0.8	1.5	1.3	1.1	0.8	0.9	0.7	1.1	0.9
J : Information and communication	1.3	0.5	0.7	0.8	1.5	1.0	0.7	0.8	1.2
K : Financial and insurance activities	0.8	0.3	0.6	0.9	0.8	1.6	1.2	0.9	1.1
L : Real estate activities	0.6	1.1	2.8	0.3	1.8	1.4	1.4	1.4	0.7
M : Professional, scientific and technical activities	1.1	0.5	0.7	0.6	1.0	0.9	0.6	0.7	1.4
N : Administrative and support service activities	0.8	1.1	0.8	1.9	1.0	0.7	0.8	1.1	0.9
O : Public administration and defence; compulsory social security	0.7	0.8	1.6	0.7	0.4	0.4	1.1	0.8	1.3
P : Education	1.1	0.9	1.1	0.5	1.1	1.2	0.8	0.9	1.1
Q : Human health and social work activities	0.8	1.2	1.1	0.3	0.7	1.1	1.9	0.9	1.1
R S T U: Arts, entertainment, recreation and other services	1.2	1.1	1.3	0.4	1.3	1.2	0.9	1.0	1.0

As can be seen from the above table, Crawley has local concentration in transport and storage with a huge LQ value of 4.6, administrative and support service activities and accommodation and food service activities. Due to Gatwick Airport’s influence on the transportation and storage sector, this has skewed all the other LQ’s and Crawley therefore has under representation in all of the other industries.



The key industry in Crawley from these stats is clearly the transport and storage sector, in particular the passenger air transport and support activities for transportation sectors. This, along with their total number of employee jobs, can be seen on the packed circles diagram on the left.

Gatwick Airport is the key contributor to Crawley’s employment. Gatwick Airport³ has 43.1million passengers a year and flies to more destinations than any other UK airport so it is a key airport to the region and a huge part of Crawley’s and West Sussex’s economy.

³ Source: www.gatwickairport.com