

Employment Trends in Adur District

Business Register and Employment Survey (BRES) Analysis
Headline Data Summary 2016

Source

The Business Register and Employment Survey (BRES) is the official source of employee and employment estimates by detailed geography and industry. The Survey collects employment information from businesses across the whole of the UK economy excluding farm agriculture, nor does it include self-employed who are not registered for VAT or PAYE schemes. The data is available from Nomis¹. There have been changes to the BRES coverage in 2016 to include solely Pay As You Earn (PAYE) based businesses, ONS have revised the 2015 data in order to be consistent with the latest release, so this report is based on the 2015 and 2016 data only.

Employment in 2016

- There were a total of 20,450 employee jobs in Adur district in 2016, Adur has the least amount of jobs (5%) in West Sussex.
- 17,870 (87.4%) of these employee jobs are in the private sector, Adur has higher proportions of private sector employee jobs compared to both West Sussex (86.4%) and England (83.0%).
- The remaining 2,580 (12.6%) of employee jobs were in the public sector, Adur has lower proportions of public sector employee jobs compared to both West Sussex (13.6%) and England (17.0%).
- 13,700 (67%) were employed full time, around two-thirds of the local employee jobs in Adur. These figures are above the county trends but below national trends, West Sussex (65.7%) and England (68.1%). The reverse applies to part time employee jobs; 6,750 (33%) employee jobs in Adur, below the county average and above national average, West Sussex (34.3%) and England (31.9%).

Employment Change 2015-2016

- Employment growth is relatively low in Adur over the year 2015 to 2016 with 130 (0.63%) more employee jobs in Adur in 2016 compared to 2015. This is lower than the county average (3.91%) and national average (1.94%).
- The number of private and public sector employee jobs both increased by 30 (0.17%) and 100 (3.91%) respectively. These changes are both below the county rates; private (3.53%) and public (6.35%), but are above the national averages; private (2.27%) and public (0.34%).
- Full time employee jobs increased by 220 (1.62%) in Adur. This is below the county average (2.84%) and above the national average (0.63%).
- Part time employee jobs decreased by 90 (-1.32%) in Adur. This is below the county average (+6.01%) and national average (+4.83%).

Change 2015-2016 Compared to the South East Region's Local Authorities

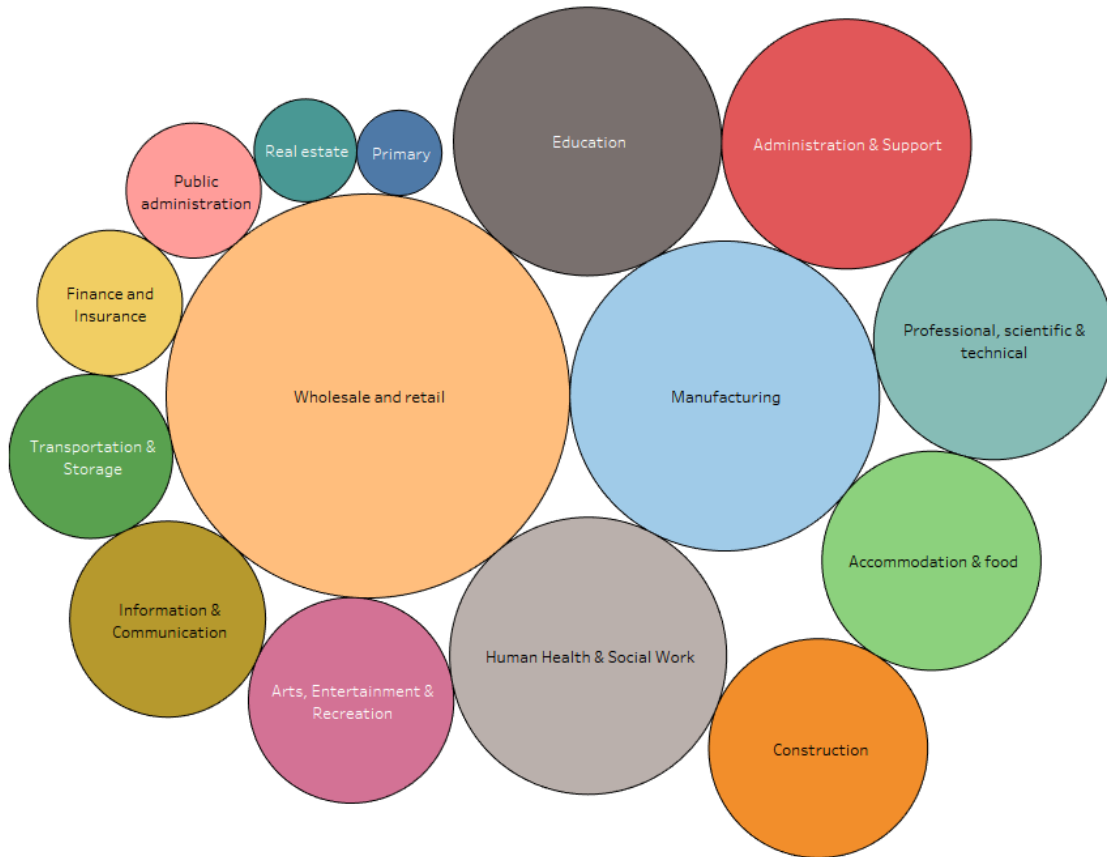
There are 67 district and borough areas in the South East region. By ranking these, with 1 indicating the highest level of growth and 67 indicating the lowest, we can measure the growth comparatively. The figures are calculated as a percentage difference between the 2015 and 2016 data. Adur has the least amount of jobs in the South East.

- 45** Adur is ranked 45th out of the 67 district and borough councils in the South East Region for **employment growth** between 2015 and 2016.
- 25** Adur is ranked 25th for **full time** employee change from 2015 to 2016.
- 62** Adur is ranked 62nd for **part time** employee change from 2015 to 2016.
- 49** Adur is ranked 49th for **private** sector employee change from 2015 to 2016.
- 13** Adur is ranked 13th for **public** sector employee change.

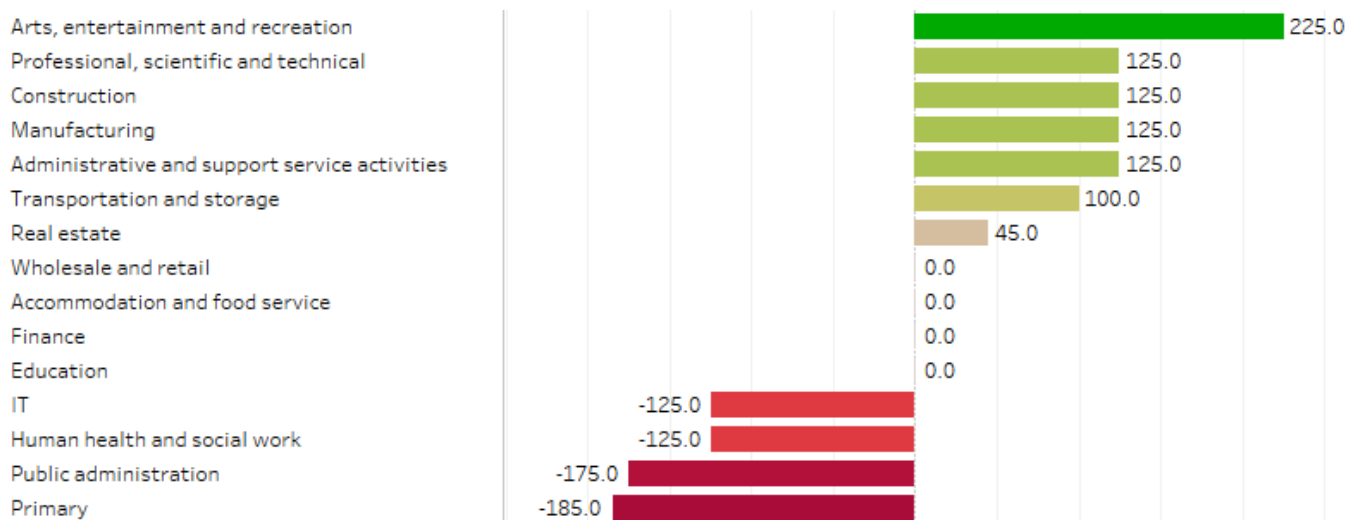
¹ The figures in this section are from the BRES public private open data source on Nomis <https://www.nomisweb.co.uk/>

Employment Sectors²

The below packed circles diagram shows the individual sectors as a proportion of the employee jobs in Adur, the most employee jobs are in the wholesale and retail sector and the primary and utilities sector has the fewest.



- Four main sectors in Adur account for over half (51.8%) of employee jobs, these are in the wholesale and retail trade including repair of motor vehicles and motorcycles (20.7%), manufacturing (12.2%), human health and social work (9.8%) and education (9.1%).
- The employee change per sector from 2015 to 2016 is shown in the table below, green highlighting an increase and red a decrease.



² The figures in this section (industry related) are from the BRES open data source on Nomis <https://www.nomisweb.co.uk/>

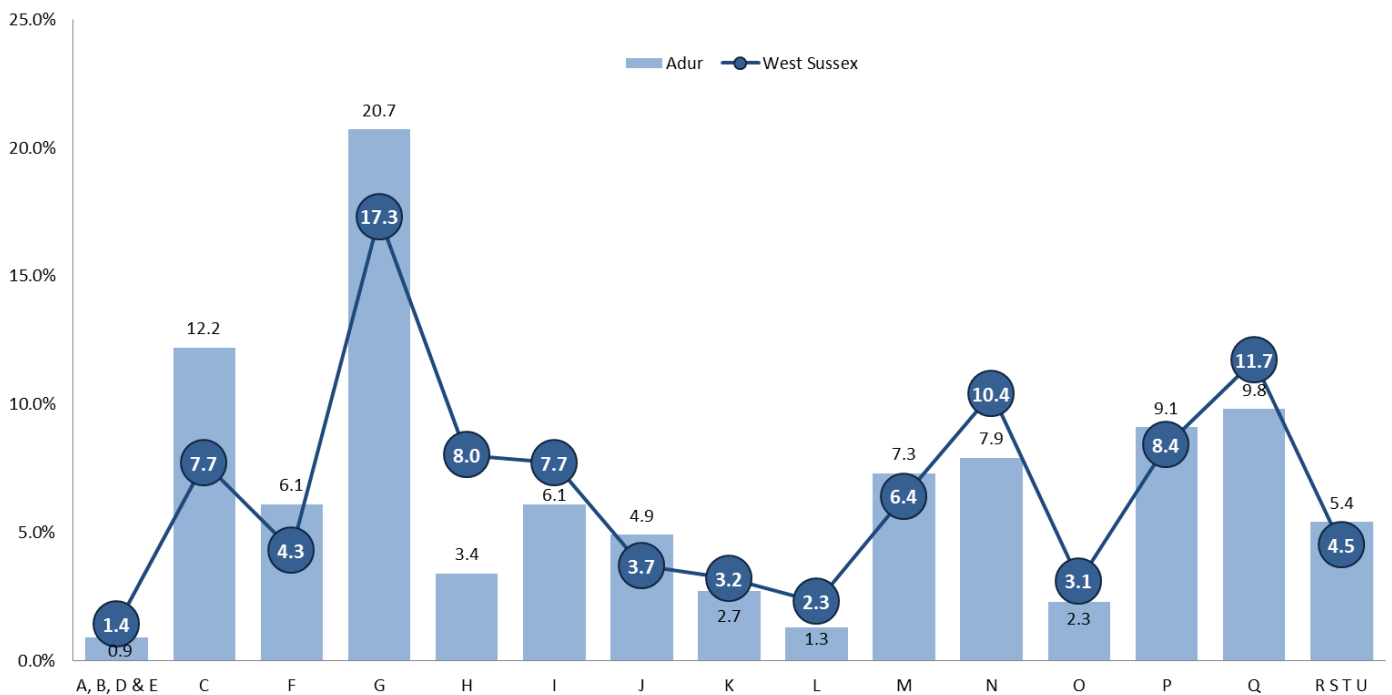
Percentage of Employees in Employment by Sector 2016

The table below shows the percentage of employee jobs by sector for Adur, West Sussex, South East and England. The sectors highlighted are the top five in those areas. As can be seen from the table, manufacturing is a key sector within Adur compared to the county, region and England. Construction is also higher than the county and regional trends.

Industry	Adur	West Sussex	South East	England
A, B, D & E : Primary and Utilities	0.9%	1.4%	1.9%	1.8%
C : Manufacturing	12.2%	7.7%	6.3%	8.0%
F : Construction	6.1%	4.3%	4.9%	4.5%
G : Wholesale and retail trade; repair of motor vehicles and motorcycles	20.7%	17.3%	16.2%	15.3%
H : Transportation and storage	3.4%	8.0%	5.0%	5.0%
I : Accommodation and food service activities	6.1%	7.7%	6.8%	7.3%
J : Information and communication	4.9%	3.7%	6.1%	4.4%
K : Financial and insurance activities	2.7%	3.2%	2.8%	3.6%
L : Real estate activities	1.3%	2.3%	1.9%	1.7%
M : Professional, scientific and technical activities	7.3%	6.4%	8.8%	9.0%
N : Administrative and support service activities	7.9%	10.4%	9.1%	9.2%
O : Public administration and defence; compulsory social security	2.3%	3.1%	3.1%	4.0%
P : Education	9.1%	8.4%	10.1%	9.0%
Q : Human health and social work activities	9.8%	11.7%	12.0%	12.8%
R S T U: Arts, entertainment, recreation and other services	5.4%	4.5%	4.8%	4.6%

Adur compared to West Sussex by industry

The table below shows how the percentages of employee jobs by industry in Adur compare with the county average.



The manufacturing sector (C) and the wholesale and retail sector (G) show the proportions of employee jobs in Adur are higher than the county averages while the transportation and storage sector (H) shows a significantly lower percentage than the county average. This sector is one of the top 5 sectors in West Sussex, though not in the South East or England due to the presence of Gatwick Airport in Crawley.

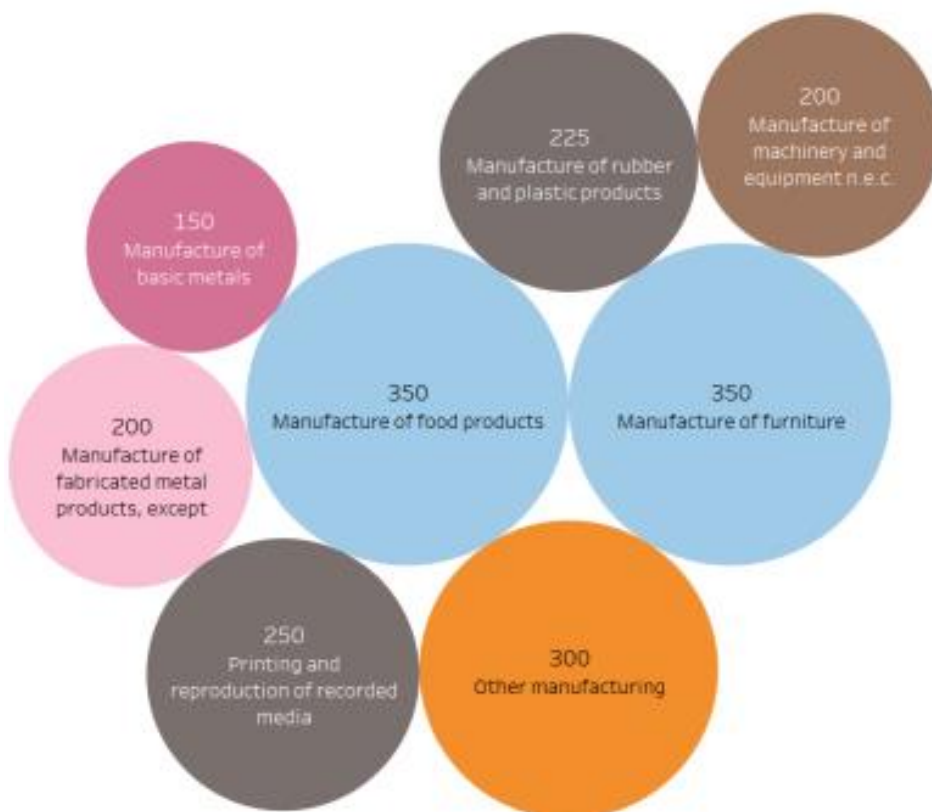
Sector strengths and weaknesses (location quotients)

It is useful to understand local economic strengths by comparing the distribution of employment by sector in local authority areas with the national distribution. This is performed by using Location Quotients (LQ). Any LQ above 1.0 shows a local concentration and any below 1.0 shows an under representation.

LQ/Sector	Adur	Arun	Chichester	Crawley	Horsham	Mid Sussex	Worthing	West Sussex	South East
A, B, D & E : Primary and Utilities	0.6	0.4	0.3	0.8	0.6	0.5	1.9	0.8	1.3
C : Manufacturing	1.6	1.0	1.2	0.9	0.9	0.8	1.0	1.0	1.0
F : Construction	1.4	1.1	0.9	0.6	1.3	1.1	0.7	1.0	1.0
G : Wholesale and retail trade	1.2	1.2	1.0	0.9	1.3	1.3	1.1	1.1	0.9
H : Transportation and storage	0.4	0.8	0.5	4.6	0.6	0.6	0.5	1.6	0.6
I : Accommodation and food service activities	0.8	1.5	1.3	1.1	0.8	0.9	0.7	1.1	0.9
J : Information and communication	1.3	0.5	0.7	0.8	1.5	1.0	0.7	0.8	1.2
K : Financial and insurance activities	0.8	0.3	0.6	0.9	0.8	1.6	1.2	0.9	1.1
L : Real estate activities	0.6	1.1	2.8	0.3	1.8	1.4	1.4	1.4	0.7
M : Professional, scientific and technical activities	1.1	0.5	0.7	0.6	1.0	0.9	0.6	0.7	1.4
N : Administrative and support service activities	0.8	1.1	0.8	1.9	1.0	0.7	0.8	1.1	0.9
O : Public administration and defence; compulsory social security	0.7	0.8	1.6	0.7	0.4	0.4	1.1	0.8	1.3
P : Education	1.1	0.9	1.1	0.5	1.1	1.2	0.8	0.9	1.1
Q : Human health and social work activities	0.8	1.2	1.1	0.3	0.7	1.1	1.9	0.9	1.1
R S T U: Arts, entertainment, recreation and other services	1.2	1.1	1.3	0.4	1.3	1.2	0.9	1.0	1.0

As can be seen from the above table, Adur has local concentration in manufacturing, construction, wholesale and retail, information and communication and arts, entertainment and recreation.

Adur has under representation in the most of the other industries, including public administration and defence, transportation and storage and primary and utilities. Education remains on a par with the national average.



The key industry in Adur from these stats is manufacturing, in particular the manufacturing of kitchen furniture, printing, manufacture of rubber and plastic products and manufacture of rusks and biscuits (preserved pastry goods and cakes). This can be seen on the packed circles diagram on the left.

Lancing Business Park is a key part of Adur district in terms of employment. *Manhattan Furniture for Kitchens and Dennis and Robinson Ltd* are two relatively large employers in Lancing Business Park contributing to the furniture manufacturing figures. *Higgidy Ltd*, based in Shoreham, is also a relatively large company contributing to the manufacturing of food products.

