

# Upper Beeding Parish Council News

The magazine for the Parish of Upper Beeding, Small Dole and Edburton



Contact us :

**Chairman:** Joyce Shaw Tel: 01903 813714

**Clerk:** Ingrid Caygill Tel: 01903 810316

**Editor:** Stephanie Shorey Tel: 01903 812913

**email:** upperbeeding.parishcouncil@virgin.net

## The Parish Map

Upper Beeding produced its own illustrated map of the parish to mark the millennium. It can be seen hanging in the entrance to the Village Hall.

The map attempted to show all that we value in the parish, particularly its history and wildlife. It has proved useful in discussions about the future of our village and the value of our environment. For example at the Public Inquiry into a South Downs National Park, it was used to justify the inclusion of Upper Beeding. (We are still awaiting the outcome of this inquiry).

Kim Leslie, of West Sussex Record Office, the initiator of the Parish Maps project, has presented our map at four different conferences in Italy since 2002. An eco-museum movement has developed in that country dedicated to preserving traditional life and the environment. It embraces all aspects of the cultural heritage including historical sites and buildings, the landscape, wildlife, language and folklore. This has led to an interest in "cultural mapping", the production of community or cultural maps, similar in concept to our parish maps. Copies of our parish map and others from West Sussex have been deposited in various libraries and museums in Italy, and are also being studied in Wales, Cumbria, Sweden and India. Poster-size copies are available for £3 in local shops.

## Horsham Volunteer Bureau

This year, designated Year of the Volunteer 2005, there has been rather more publicity for the many different ways that people get involved in their local communities or work for national or international charities.

Horsham Volunteer Bureau (HVB), the volunteer centre for the Horsham district, provides information about volunteer opportunities and helps people of all ages, whatever their circumstances, availability and personal interests, to find activities to suit them.

In the Upper Beeding area, including Henfield, Steyning and the surrounding district, schemes to provide door to door transport for the elderly, conservation groups, day centre activities and fund raising events for health care and overseas aid, would all welcome more volunteers.

It isn't always necessary to make a big time commitment to make a really valuable contribution – perhaps to someone else's life or to the general well-being of the neighbourhood.

Just one hour a week, at a time to fit in with other commitments, is all it takes to befriend someone with mental health problems, an adult with learning difficulties, an older person living alone or a young parent finding life difficult. Being a volunteer mediator can be a stimulating and rewarding way to help resolve neighbour disputes. Training is provided by Befriending and Mediation schemes.

One of the many benefits of volunteering is having the opportunity to meet new people by joining in activities that bring benefit to others.

For information about how you could volunteer or to arrange an informal interview in Upper Beeding, Henfield or Steyning, contact HVB on 01403 232 100 or email [horshamvb@care4free.net](mailto:horshamvb@care4free.net)

## Street cleaning

The Council has arranged for street cleaning to be carried out in Beeding on a fortnightly basis. The round starts at Beeding Bridge and covers the High Street including the car park, Hyde Lane, Pound Lane, Pepperscombe Lane/Deacons Way, part of Church Lane and Saltings Way back to the Bridge. Please help us to keep the village clean by not dropping litter and disposing of it in the litter bins provided.

## Local History Society

The Beeding and Bramber Local History Society meet in the Village Hall at 7:45pm on the first Wednesday of each month, except in the summer. Usually a speaker gives an illustrated talk on a subject of local interest.

The Society may also be able to help you research your house history and family tree. We have our own collection of archives including parish registers and censuses. If you have any old photographs or post-cards of the area, we would be pleased to copy them for our archive.

### Forthcoming programme:

Non-members are welcome to attend for £1.

Wednesday 5<sup>th</sup> October – The Wey and Arun Canal by Tony Pratt.

Wednesday 2<sup>nd</sup> November – The Garland Collection of Rural Photos by Alison McCann.

Alison McCann works at the West Sussex Record Office in Chichester which holds a collection of photographs by George Griffin Garland who was a professional photographer from the 1920's to his death in 1978. He roamed the countryside photographing local characters, sheep fairs, ploughing matches etc. and approximately 70,000 of his negatives were left to the Record Office.

Our December meeting will be our Christmas Social, for members only, at which we will be celebrating our 25<sup>th</sup> anniversary.

For further details of any aspect of the Society, contact Pat on 01903 812 847 or Sheila on 01903 879 249.

## Neighbourhood Warden

Following the departure of our Neighbourhood Warden, Jason Pumphry, a new Warden, Louise Sunderland, has now been recruited. She started at the beginning of August, and can be contacted on 01903 813 236.

### A few words

If you run a business in the parish we would like to hear from you. Send us a short write-up, telling us what it is you do, and a little about the history, and we will include it in our newsletter. e-Mail the Editor, [stephanie@redmini.co.uk](mailto:stephanie@redmini.co.uk) or the Clerk [upperbeeding.parishcouncil@virgin.net](mailto:upperbeeding.parishcouncil@virgin.net)

## Parish Council Meetings

Forthcoming Parish Council meetings will be held on Tuesday, 1<sup>st</sup> November and Tuesday, 6<sup>th</sup> December, at 7:30pm in the Beeding & Bramber Village Hall.

Committee meetings (Planning, Amenities, Sports & Leisure and Finance & General Purposes) will be held on 18<sup>th</sup> October, 15<sup>th</sup> November and 20<sup>th</sup> December in the Beeding and Bramber Village Hall. All meetings are open to the public.

## Beeding in Bloom

It has been a busy time lately for the Beeding in Bloom Committee. The South East in Bloom competition was held on 6<sup>th</sup> July. The day was fine and the judging seemed to go well.

Our next event was the garden competition on 8<sup>th</sup> July. This was judged by Steve Marsden, a Small Dole resident who works for Horsham Council Parks Services. Our thanks to him for that. The standard was high in spite of a hose-pipe ban and dry conditions.



The winner of the best garden was Carole Symons and Highly Commended was Lynda Piper. The best Hanging Basket and Containers was won by Sally Vickers and the Highly Commended was won by Elaine and Tony Ellmer.

The Jim Heritage Cup and prizes were presented by Derek Deedman at a small buffet lunch in the 'Rising Sun'. The winners of the Best Commercial Property was the Rising Sun, the runners up, Beeding and Bramber Village Hall.

The third event was the Open Garden Day on 17<sup>th</sup> July. This was the first time Beeding in Bloom have held this particular fund raising event and it proved to be very profitable and enjoyable. Four hundred and twenty five pounds was raised for Beeding in Bloom, and three charities benefited from the sale of refreshments and plants – with £60 going to Save the Children, £25 going to Palestinian children and £50 going to the National Children's Society. Our thanks to the 13 garden owners who allowed 122 visitors to view and enjoy their gardens.

Thanks also go to the Convent who allowed us to use their car park and view their Chapel and sunken gardens. Funds raised will be used to purchase shrubs for the village this autumn.

### Fly tipping

To report fly-tipping & abandoned vehicles call Horsham District Council on 01403 733 144 or e-mail [contact@horsham.gov.uk](mailto:contact@horsham.gov.uk)

## Overgrown hedges

Please ensure that your hedges, shrubs or trees do not obstruct footpaths or pavements outside your property. Vegetation needs to be cut back so that pedestrians can walk past, mums and dads can use buggies on the footpaths or pavements without obstruction and partially sighted and less able people can use the pavements safely.



## Upper Beeding Football Club

### Women's Fixtures

2<sup>nd</sup> October : Horley Town - Home (Memorial ground) 2:00pm kick-off  
9<sup>th</sup> October : Medway - Away (Gillingham) League Cup Round One - 2:00pm kick-off  
16<sup>th</sup> October : Chichester - Away, Sussex Challenge Cup Round One - 2:00pm kick-off  
23<sup>rd</sup> October : Hassocks - Away, League 2:00pm kick-off  
30<sup>th</sup> October : UKP - Home League (Memorial ground) 2:00pm kick-off

### Senior Men's Fixtures

15<sup>th</sup> Oct - 1st team - Burgess Hill Town Rsvs - Home, Sx Intermediate Cup - 3pm kick-off

## Charter Standard

Upper Beeding Football Club's application for the Charter Standard mark has been approved by the Football Association. We are now one of only 47 clubs in Sussex to be awarded the Charter Standard, and to achieve this all these clubs have had to demonstrate management, child protection, qualified coaches, codes of conduct and insurance.

The most important benefit to Upper Beeding is that we are recognised by the FA, and the football world in general, as a club that provides a safe quality experience for its players. We are also allowed to use the FA logo on letterheads, advertising and merchandise. We will also receive footballs and tickets for England Youth and Women's Internationals.

This is a fantastic achievement. However, we do not intend to stop now. We are already working towards the next level of Charter Standard – the Charter Standard Development Club, of which there are only 7 clubs in Sussex.

We intend to publicise our award so you will hear plenty more about it. Your football club is making great strides forward thanks to our sponsors and the many volunteers who give their time freely.

If you would like to help in any way then please contact any of the officers of the club – Chairman Steve Gretton 01903 814 550; Secretary Ron Patmore 01903 816 331.



**STANDARD  
CHARTER  
CLUBS**



## October half-term football fun course

This is a partnership venture between UBFC and Horsham District Council's Leisure Link Team – for boys and girls aged 7 to 11 years old.

**Venue** – the Memorial Playing Field, Upper Beeding

**Dates / times** – Tuesday 25<sup>th</sup> and Wednesday 26<sup>th</sup> October from 10:00am until 3:00pm each day

**Cost** – £10 per day payable in advance (£5 for Leisure Access Card holders – 01403 215 263 for more information)

**Further information** – contact Alastair Smith 01903 813 557 or email [alastair.smith@tiscali.co.uk](mailto:alastair.smith@tiscali.co.uk)

**Notes** – places are limited; applications will be dealt with on a first-come-first-serve basis

**Booking** – contact Wendy Smith, 28 The Driftway, Upper Beeding, BN44 3JX or tel 01903 813 557 by 7<sup>th</sup> October.

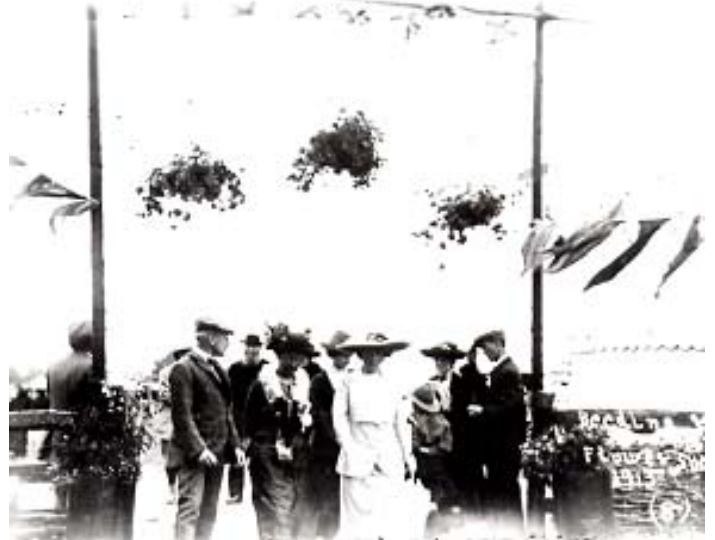
The course is a fun course for boys and girls from 7 to 11 years of age and is aimed at children who wish to play and enjoy football in a safe, enjoyable, fun atmosphere. The course will include basic individual and group coaching, football based fun games, small sided games, tournaments and much more.

What you will need to bring:

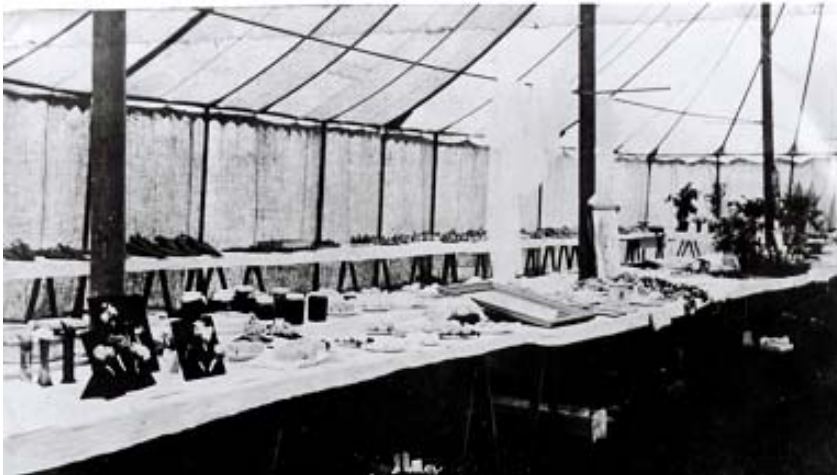
- suitable training wear – including appropriate footwear
- warm/waterproof clothing
- suitable training wear – including appropriate footwear
- shin pads
- sun hat / sun block
- packed lunch and drinks

## The History of Beeding and Bramber Horticultural Society

It seems that Beeding and Bramber Horticultural Society was founded in 1905, but little is known about its early history. Flower Shows were held annually in a marquee erected on Follies Field, where Dawn Close now stands. A 1913 photograph shows a timber archway erected at the entrance to the field, decorated with flowers and bunting. The marquee can be seen on the right. One photograph survives showing the interior of the marquee with produce laid out on trestle tables.



A photograph from 1920 shows that the Flower Show was sometimes combined with a Sports' Day. Girl Guides and cheerful ladies in large hats are seen cheering on the contestants. Does anyone know where this photograph was taken?



At some time after the Village Hall was completed in 1930, the Flower Shows were held there, except for some of the war years. In the 1950s, records show that a Summer Show and Sports Day were being held in August and an Autumn Show in November, but 1957 was to be the last year for this to happen. The autumn show that year ran at a loss and the following year it was decided to only hold one show in August in the Village Hall with children's games and side-shows outside. However, after a disastrous clash of dates with the Conservative Association forced the date

to be changed, the committee seems to have lost heart and no more shows were organised. The Society was officially disbanded in 1965 and all the cups that had been presented in 1958 left with those who had won them.

It was to be 15 years before the Society would be reformed, and, in 1973, following a meeting called by Harry Phillips and Chris Grinyer, a Summer Show was held at the Calabash Rooms, Bramber. Some of the old cups were retrieved and new ones donated and the society went from strength to strength, returning to the Village Hall for their annual show from 1975 onwards. In 1983 a Spring Show was held for the first time which has also become an annual event.

However with fewer people growing their own produce, making their own jam, knitting, sewing or even baking a cake today, the number of entries to the shows has steadily



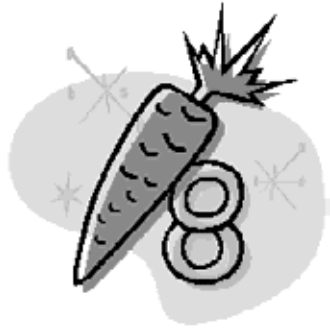
declined. Perhaps the trend can still be reversed. More people, especially women, are taking on an allotment and are keen to grow their own fresh fruit and vegetables. The Summer Show is a popular event and attracts many visitors.

One man has been chairman since 1976: Charles Parsons, now aged 85. When he retires he will leave a strong Society and a legacy of 30 years of successful shows to be proud of, at which he has been a frequent cup-winner himself. But who will be prepared to take over from him? On this, the future of the Society depends.

**The Beeding & Bramber Horticultural Society** AGM is on 28<sup>th</sup> October in the Beeding and Bramber Village Hall.

## Small Dole Summer Show

The 61<sup>st</sup> annual Small Dole Summer Show was held on 13<sup>th</sup> August at the sports field and again was well attended. The show, organised by the Small Dole Horticultural Society, featured nearly 450 exhibits of flowers, vegetables, handicrafts, art and food. The number of flower entries were less than in previous years, possibly due to unusual spring and summer weather but this was well compensated by increases in the number of entries to other classes. Particular mention must be made of the 74 entries from children



which is a tribute to the encouragement of parents.

The show is not merely for enthusiastic experts. We seek to attract those who just get enjoyment from tending their gardens and engaging in hobbies and art. It is

also an opportunity for all to share their delights with the community, be it the produce of an ordinary garden or the production of attractive dishes from the kitchen.

The Summer Show is not run for profit, but aims to offer a traditional village event for the enjoyment of all who attend. Local organisations and charities are invited to display. Popular entertainment was provided by the Patcham Silver Band and there were amusements for children. The Tottington Woodlanders mounted displays of their crafts. Another attraction was the fun dog show which was well supported with dogs of many breeds.

We are grateful to Mackley Construction for their assistance in running the show and providing vital transport, and to the Small Dole Christian Fellowship for their help and to all who helped provide refreshments.

The AGM will be held on 10<sup>th</sup> November. We need more people who are willing to offer a few hours each year in running the Society. We want to make it better and new faces with fresh ideas are always welcome. If you would like to help, please contact the Society.

It is events like the Summer Show which binds together our community and we can be proud of our achievements over so many years.

## What's in a Flint?

Flints often contain the petrified remains of sea creatures. Recently some particularly round, smooth flints were picked up on the allotments. The University of Oxford Museum said they were naturally formed flint nodules, each containing the remains of fossil sponges. They were formed towards the end of the



Cretaceous era, about 75 million years ago, when ancient sponges were buried by chalk sediments and subsequently petrified. The marks are a combination of the remains of the sponges themselves and rust marks, where iron tools such as spades and ploughshares have scraped past them.



Other flints found locally are fossilised sea urchins, the gills still visible across the top giving the appearance of a crown.

## An encouraging response



There has been an encouraging response to the Tree Warden's article in the last Newsletter (April 2005) 'would you like a tree planted on the verge outside your house?'. If you have not yet been able to contact the Tree Warden and would like to have a tree outside your house, then please

phone Judith Steedman now on 01903 814 923.

## Short Mat Bowls

Are you at a loose end on a Tuesday afternoon, and looking for a new hobby?

Come and join us at Beeding and Bramber Village Hall for a game of Short Mat Bowls.

Beginners welcome, male and female; it's very informal, have a roll up, a chat and a cup of tea or coffee. All you need is a pair of thick socks or very flat soled shoes.

For more details phone Ted or Sue on 01903 815 557 or just call in on Tuesday afternoon 2:30 – 4:30pm.

Look forward to meeting you there.

Evening session Tuesday evening 7:30 – 9:30

Club night Friday 7:30 – 9:30

## Don't give thieves an easy ride



Crime levels are falling in Horsham District, making it the safest place to live and work in Sussex. The risk of becoming a victim of crime is at its lowest for 20 years - but it hasn't gone away. Most crimes are opportunistic 'spur of the

moment' actions and none more so than car crimes.

With 70% of all households in Horsham District owning a car, thieves can wait for a simple mistake or lapse in concentration before striking. By taking a few common sense steps to prevent car crime you can hopefully prevent yourself from becoming another statistic.

### Always -

Close the windows and sunroof, lock the doors and activate any security devices when leaving your car unattended.

Park with care and when at home always use your garage if you have one, locking both your car and your garage door. If you don't have a garage, always try to park in a well-lit, open place, particularly at night or if you are leaving the vehicle for a long period.

When parking away from home, always try and park your car in an attended car park. Why not look for a public car park which is part of the police-approved Safer Parking scheme - [www.saferparking.com](http://www.saferparking.com)

Lock your doors and don't open your windows fully when you are driving, especially in slow traffic.

Have your car registration number or the last 7 digits of your Vehicle Identification Number (VIN) etched onto all windows and your headlamps.

### Never –

Leave cash, credit cards, mobile phones, vehicle documents or other valuables in the car. (If you have no choice but to do so, make sure they are hidden well out of sight before you begin your journey – thieves may be watching you park!).

Leave your keys in the car, even for a second – especially when visiting petrol stations – treat them as you would cash and credit cards.

Leave car keys on display at home or at work – burglars regularly break into offices and homes purely to steal car keys.

## WI - Small Dole

Forthcoming events: the AGM will be held on 11<sup>th</sup> October; the 'Fish and Chip' supper will be held on 8<sup>th</sup> November and the Christmas Party will be held on 13<sup>th</sup> December.

For more information please telephone 01273 494 947

## Please help your Village Hall

The Bramber and Beeding Village Hall in Upper Beeding High Street is a registered charity. The land is owned by the Holding Trustees of the hall under trust and we currently have four Holding Trustees. The hall is managed by a Council of Management formed of volunteers: a Chairman, Vice Chairman, Treasurer, Secretary and Minute Secretary, a member from each of our "Regular Users" and "Villagers". Regular Users are users of the hall who have applied and pay a reduced hire rate, commit to send a representative to attend committee meetings, actively support fund raising activities and encourage members to attend them. Villagers are anyone living in Beeding and Bramber willing and interested to contribute to meetings.

We urgently need a replacement Chairman of the Council of Management from May 2006. This **voluntary** role needs someone organised, who can manage people and situations, and involves –

- chairing four meetings each year
- and, in conjunction with other committee members
- ensuring the hall is kept appropriately maintained, repaired and insured
- supervising the employees (we currently have three excellent employees who require minimal supervision)
- overseeing fund raising events
- being aware of the hall's use and financial situation
- dealing with any problems

Traditionally we have had a separate Fund Raising Committee Chairman, but have not been able to find someone willing to take on this role throughout the past 18 months. Additionally the Fund Raising Committee members have decreased and we have been forced to reduce our number of fund raising events. Anyone taking on the Fund Raising Chairman role would preside over meetings, plan events, motivate people to help. They would need to be someone with enthusiasm, willing to predict what events would be successful and able to organise them, enlisting sufficient people to assist. Our main weakness during the recent past has been our inability to recruit new members to the two committees mentioned above.

Currently our Treasurer acts as Minute Secretary and would very much like someone to take on this role, if anyone in the villages is willing to take minutes at meetings, issue agendas and distribute both of these.

### PLEASE HELP

It sounds onerous and we do have some problems, but we also have a lot of fun and great satisfaction when things go well. Enquiries about the three roles mentioned above to: Lorna Crutchlow, Chairman Council of Management 01903 741 404 or Helen Thompson, Treasurer 01903 815 169

## Remit of Neighbourhood Wardens

To provide a reassuring uniformed patrolling presence both on foot and by vehicle.

### Help to reduce crime and the fear of crime by:

- frequently patrolling the area providing reassurance and a deterrent
- passing information, including names and addresses to police
- interacting with young people to deter them from offending
- compiling files on selected individuals for possible action by Anti-Social Behaviour Co-ordinator

Responding to minor incidents and anti-social behaviour which are witnessed by us or by residents who contact the Wardens.

Acting as professional witnesses. Residents are often reluctant to give evidence in court for fear of reprisals. They should therefore contact the wardens whilst an incident is taking place so that the wardens can attend, witness the incident and collate evidence.

Reporting of environmental incidents such as abandoned vehicles, fly tipping and damage in public areas and monitoring remedial action.

### Supporting the community by:

- offering assistance to the elderly and vulnerable
- supporting and encouraging diversionary activities for young people
- offering advice on crime prevention and fire safety in the home
- offering Smartwater security marking to all in the community
- encouraging residents to make full use of County and District Council services

### Notes:

Wardens are not empowered to carry out the following actions:

- report invalid road tax
- chase vehicles (Wardens should not break speed limits)
- disperse groups of people unless offences are being committed
- Search and confiscate articles

Telephone Numbers - Office (not normally staffed) - For non-emergency messages to be left 01903 813 236

Paul Thayre (mobile) 07734 387 888

Louise Sunderland (mobile) 07734 387 889

## Parish Council meeting minutes

If you would like to have a copy of the minutes (Council or Committee), please contact the Clerk to put your name on the mailing list or check the Council's website on [www.westsussex.gov.uk/upperbeeding](http://www.westsussex.gov.uk/upperbeeding) where all minutes are published

## South East in Bloom Results

Dawn Burrage, Pat Nightingale and Tricia Toe represented Beeding in Bloom at the South & South East in Bloom Award Ceremony held in Chichester on the 7<sup>th</sup> September. There were six entries in the Large Village Category and Upper Beeding came **second** with **silver gilt**.

The Judges made the following comments about our entry:

**General:** A superbly organized and conducted tour of a most attractive village. The Countryside Farm Park Estate was a model example of community pride in their area.

**Floral Displays:** Good displays, numerous and well placed. Some very fine gardens, especially throughout in the Countryside Farm Park and in The Florets. The use of memorial planters and plantings – a nice idea.

**Permanent Landscaping:** A fair diversity and uniqueness of styles – no generic front gardens here! Japanese, sub-tropical and dry residential gardens were much liked and commended. The sunken garden at the school makes good use of a problem area. Water conservation is evident in gardens through the use of mulching, drought-resistant plants and water butts.

**Local Agenda 21 & Sustainable Development:** The school's wildflower planting disguises an unsightly area, but will need careful management to continue successfully. The placement of bollards has improved security at the Saltings site and is a very positive move to limit damage and prevent unauthorized access.

**Local Environmental Quality:** Very clean, little dog mess, no chewing gum or graffiti. The litter warden, funded by the Parish Council, is doing a good job. The Countryside Farm Park community is spotless and the enthusiasm of the residents is a good model for others.

**Public Awareness:** Good publicity in the form of children's posters, telegraph pole posters, announcements and newsletters. In addition to the local in bloom competition there is also a village gardens open day.

**Some areas for improvement were:** Planting schemes needed an extra 'wow' factor at Village Sign and in planters in the shopping areas. Higher marks would be achieved if the pubs and commercial premises raised their standards to those of private displays. The community could improve its village entrances by declaring its "In Bloom" entry, perhaps using sponsored signage.

**Certificates of Excellence were awarded to:** Upper Beeding Primary School, 2<sup>nd</sup> Beeding & Bramber Brownies, St Peters Green Housing, Countryside Farm Park Estate, Adur View, The Florets, R Hornsby, Michael White, Marguerite Hatcher, Mr & Mrs E Smith, Adrian Sullivan, Elaine & Tony Ellmer, Hyde Square Shops, Saltings Field Conservation Group and Hyde Lane Residents.

Beeding in Bloom Committee thanks everyone who has helped the Village to look so good this year and to achieve such a good result.

SOS – We urgently need volunteers to help hang up and take down the baskets. This only takes one morning at the end of May and one morning in September. It involves climbing ladders and lifting and fitting the baskets, which are quite heavy. Please volunteer now for 2006 by contacting either Tricia on 01903 812 366 or Tony on 01903 816 585.



### Upper Beeding Thursday Club

We are expecting some batty' friends in the village hall on 20<sup>th</sup> October When Sheila Wright talks on bats. On 3<sup>rd</sup> November we arranged a visit to Horsham to see Fame, the musical. On 17<sup>th</sup> November the British Academy of Sound Therapy gives a presentation to 'chase away the blues'. The festive season starts with Mr Wedgbury reminiscing Christmas traditions and legends. We round this year off with a Christmas meal at The Fox in Small Dole.

Please call Daphne Dedman on 01903 814 178 for more information.