

A284 Lyminster Bypass (North) – Progress Update

Date: 07/12/2023

This is the latest monthly newsletter updating you on progress made in the construction of the Lyminster Bypass. We hope you find it useful, but please contact us if there is anything you would like more information on or if you would like to give us any feedback.

North of Ancient Hedgerow

Now with all of the surcharge removed, drainage works have continued. Drainage pipes have been laid underground connecting each manhole. Now being in the 'rainy season', we are working hard against vast amounts of ground water flow filling into the trenches we dig. This water is then pumped back into the stream so our work can continue.

Work has also been done on the A284, inserting two drainage pipes running across the road. This has been done in preparation for work starting on the new culvert in Brookfield Stream. The water running through the existing culvert will be temporarily diverted along these pipes into the other side of the stream, this is known as over pumping.



Image 1 Drainage pipes and pumping out ground water.



Image 2 Manhole for drainage.



Image 3 Drainage for culvert into Brookfield stream.

Ancient Hedgerow to Bridleway

The footpath has been 'surcharged' with aggregates, this helps with compaction to enhance its strength. It will then be tarmacked and completed.

Drainage work proceeds for the northern pond, a pipe has been laid coming out of the northern pond, draining the water into the manhole, before continuing through the drainage system until finally reaching Brookfield stream.



Image 4 Manhole draining northern pond.

Bridleway to Black Ditch

Although increasing every day, we have now fully completed around one third of reinforcement steel work on the bridge, and the first concrete pours. We started in the middle of the bridge and are working our way outward. Care has been taken to seal the base of the deck, ensuring it is watertight to protect the environment. This shields Black Ditch from any concrete grout loss or water leaks.

The concrete for the northern abutment back wall has been poured and the wing wall rebar has been completed, ready for their pours.

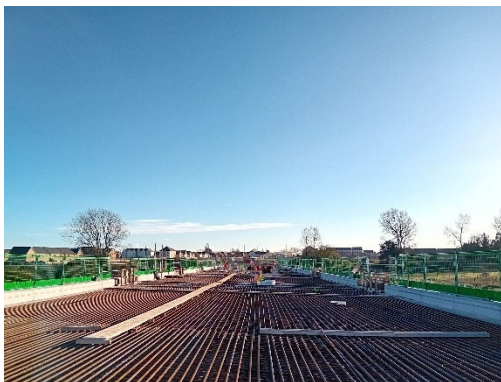


Image 5 Completed rebar.



Image 6 Final parapet ready for concrete.



Image 7 North abutment concrete pour.

South of Black Ditch

Steel reinforcement bar work carries on at the bridge both North and South of black ditch. Steel reinforcement work has been focused on the parapet walls and diaphragms. The diaphragms are the spaces between the larger horizontal beams, making up the deck, and are constructed of concrete with steel reinforcement bars. They provide the connection between the bridge deck and the piers below. There have also been the first two diaphragm concrete pours. Each load of concrete delivered is tested for its consistency using a 'slump test' as well as taking samples used to check the strength. This ensures we have the desired strength and finish and the viaduct is safe for use.

The South abutment has also seen progress with the back wall shutters being placed, ready for placement of reinforcement steel prior to the concrete pour.



Image 8 Bridge progress facing North.



Image 9 Steel work on parapet wall.



Image 10 Diaphragm concrete pour.



For further information about the scheme please visit the Lyminster Bypass North page on West Sussex County Council's website:

<https://www.westsussex.gov.uk/roads-and-travel/roadworks-and-projects/road-projects/lyminster-bypass-north/>

Should you have any specific scheme enquiries, please contact lyminsterbypass@jackson-civils.co.uk