

A284 Lyminster Bypass (North) – Progress Update

Date: 04/08/23

This is the latest monthly newsletter updating you on progress made in the construction of the Lyminster Bypass. We hope you find it useful, but please contact us if there is anything you would like more information on or would like to give us any feedback.

North of the Ancient Hedgerow

Following on from last month's newsletter, in this area we have continued to carry out daily surveys of settlement and water pressure under the embankment. Whilst the settlement values are reducing, the area is still settling. Therefore, we have not removed any of the surcharged material this month.



Image 1: Chalk embankment being surcharged

Ancient Hedgerow to Bridleway

We have now completed placing subbase stone (type 1) in this area of the works. The subbase is the stone placed on top of the formation on which the asphalt is then laid. This section is 250 metres and includes the bell mouth for the new T junction. Following last month, the streetlight ducting has been installed in this area. This month we have been installing road crossings for the streetlight and traffic signal ducts. We have also been installing gullies and finishing last bits of drainage in this section. Gullies are made up of a metal grid at the road level (usually next to the kerb) and a pot below where the water gathers. They have an outlet that connects to the drainage pipes to ensure rainwater is moved from the road to a nearby pond / swale / ditch. To finish off the section we have placed the kerbs and channels. Next month this section will see two layers of asphalt being placed.



Image 2: Kerbing along northbound carriageway



Image 3: Duct crossing beneath the road

Bridleway to Black Ditch

We are currently building the piers that hold the viaduct beams. The steel fixers are continuing to build up the piers, and when they are completed, the formwork is put up. The steel fixers place the reinforcement steel prior to installing formwork. Formwork is the mould in which we pour the concrete. All the piers North of Black Ditch have now been fully poured, apart from the Northern Abutment (the end pier that holds the structure).

The base and bearing plinths have been poured leaving the back wall only. Bearing plinths are the square concrete bases on which the bridge will rest. Form work is being put up for this at the moment. The back wall is the same level as the concrete for the bridge deck. After that the wing walls are poured and the embankment construction behind the bridge can commence.

A bit more work was done on the farm access tracks and the drainage swale (a type of ditch). Additionally, the maintenance platform between the piers was commenced and the first pier scaffolded ready for viaduct beam installation. The beams are the horizontal structural supports on which the bridge deck will built. The maintenance platform is for future inspections of the viaduct. These are done to ensure the viaduct performs as expected and if any issues are found WSCC can correct them prior to it creating hazards for road users.

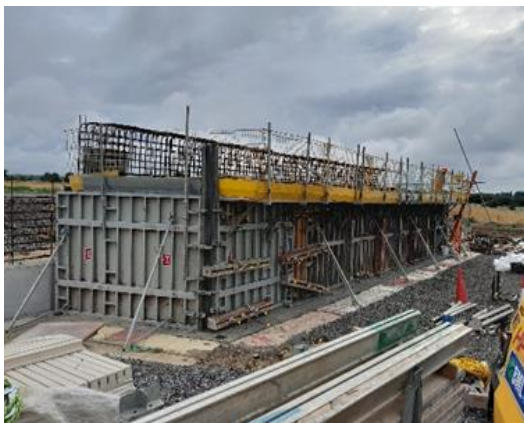


Image 4: Formwork surrounding the north abutment



Image 5: Pier 10

South of Black Ditch

We have been continuing to put form work up for the bridge piers which have now been completed. The only thing remaining to be poured on the south side is the Southern abutment. This will require five separate pours.

We have also completed the outfall into the black ditch for the road drainage and backfilled around the piers. The road drainage includes gullies and the underground pipe system that gathers the rainwater from the road and transports it to the swales and ponds. A temporary stone maintenance platform is also in place between most piers and scaffold erected on two of them. This scaffold will be used to erect the beams.



Image 6: View of piers south of Black Ditch



Image 7: Area between piers tidied and scaffolding put up

Community project

At the Lyminster project, the Jackson team have been liaising with Carol Hatton (Parish Councillor) the past few months, to provide the community of Lyminster with a new bench in Church Lane, Lyminster.

The old bench was starting to become frail and breaking in certain places. Many members of the community use the bench and with it being outside the church, it gets many visitors, especially in the summer. Jackson installed the new bench on Tuesday 27th June 2023.



Image 8 – The old bench in Church Lane



Image 9 – The newly installed bench



For further information about the scheme please visit the Lyminster Bypass North page on West Sussex County Council's website:

<https://www.westsussex.gov.uk/roads-and-travel/roadworks-and-projects/road-projects/lyminster-bypass-north/>

Should you have any specific scheme enquiries, please contact lyminsterbypass@jackson-civils.co.uk